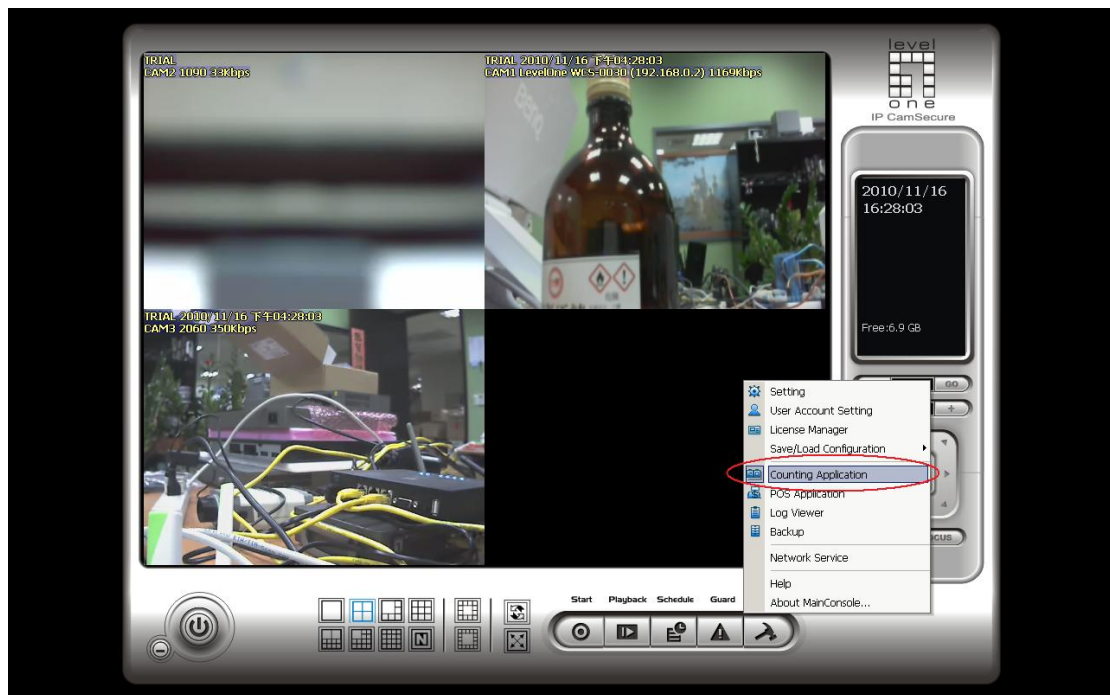


How to configure IP Cam Secure Counting Application ?

1.) Open Counting Application setting panel

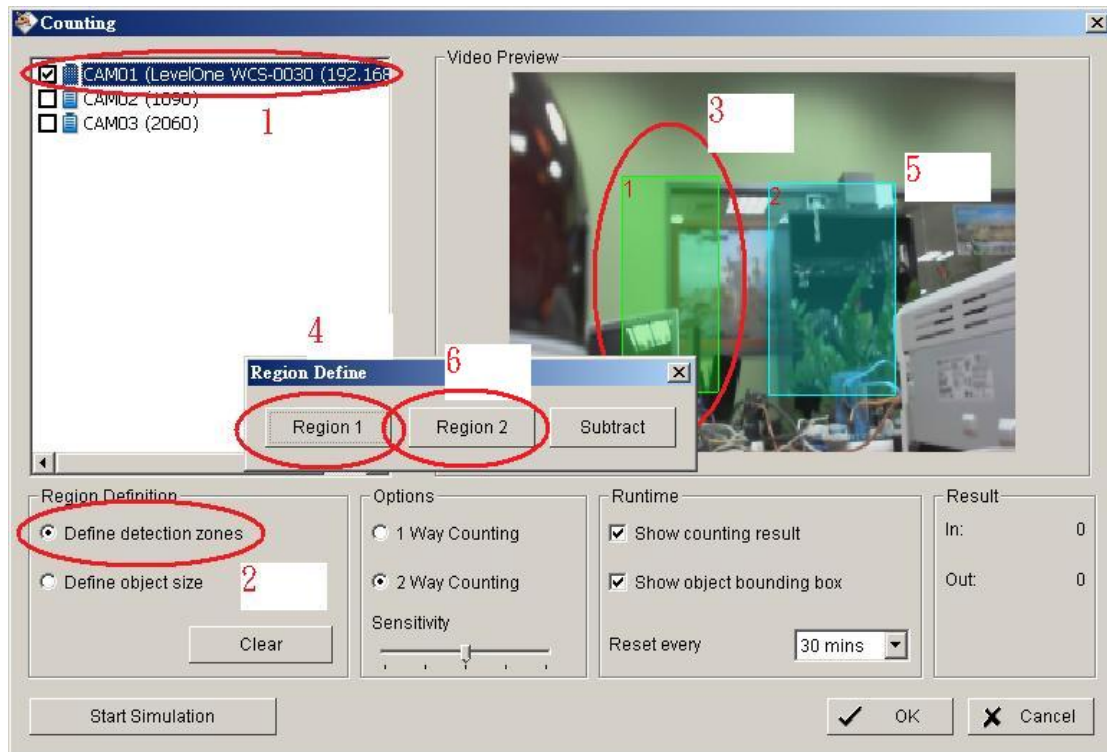
[Main Console] -> [Config] -> [Counting Application]



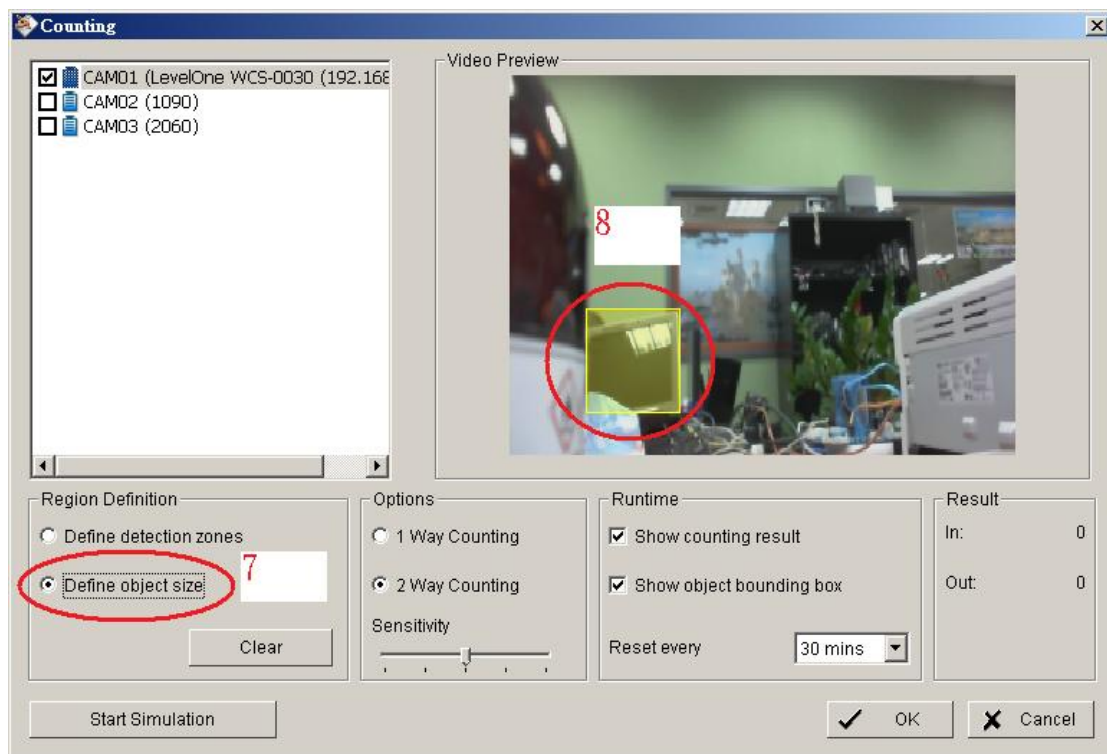
2.) Configure Counting Application

[Choose a camera] -> [Define detection zones] -> [Drag the cursor to draw Region 1] -> [Click on Region 1]

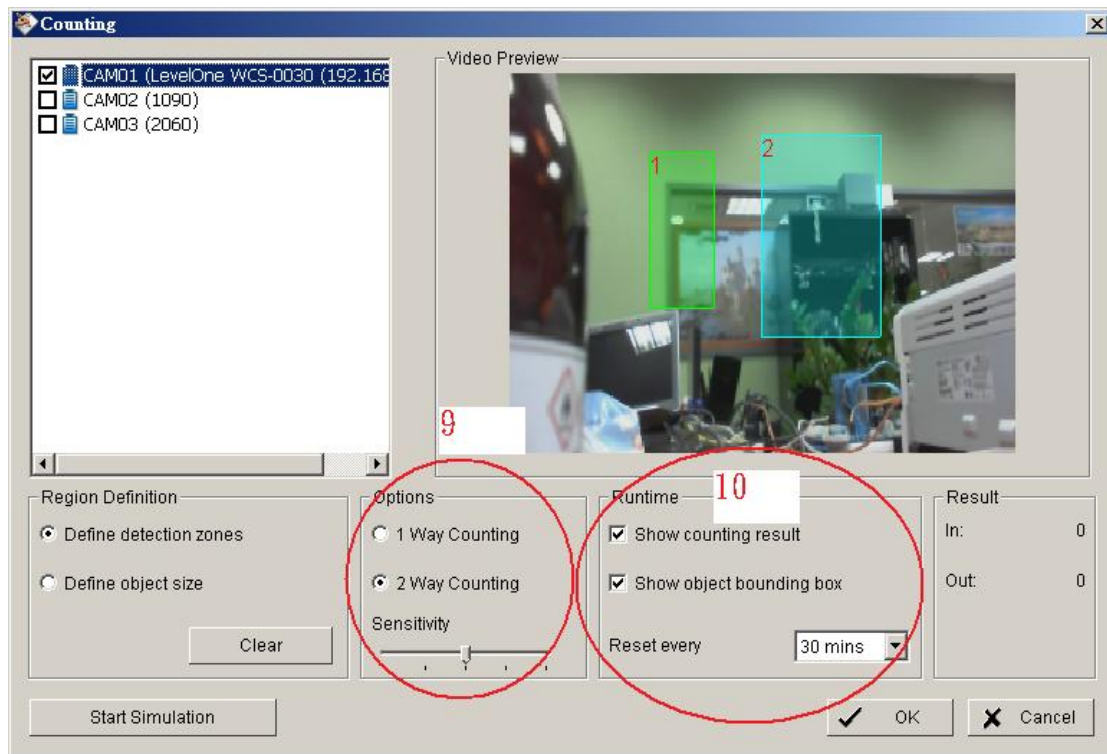
[Drag the cursor to draw Region 2] -> [Click on Region 2]



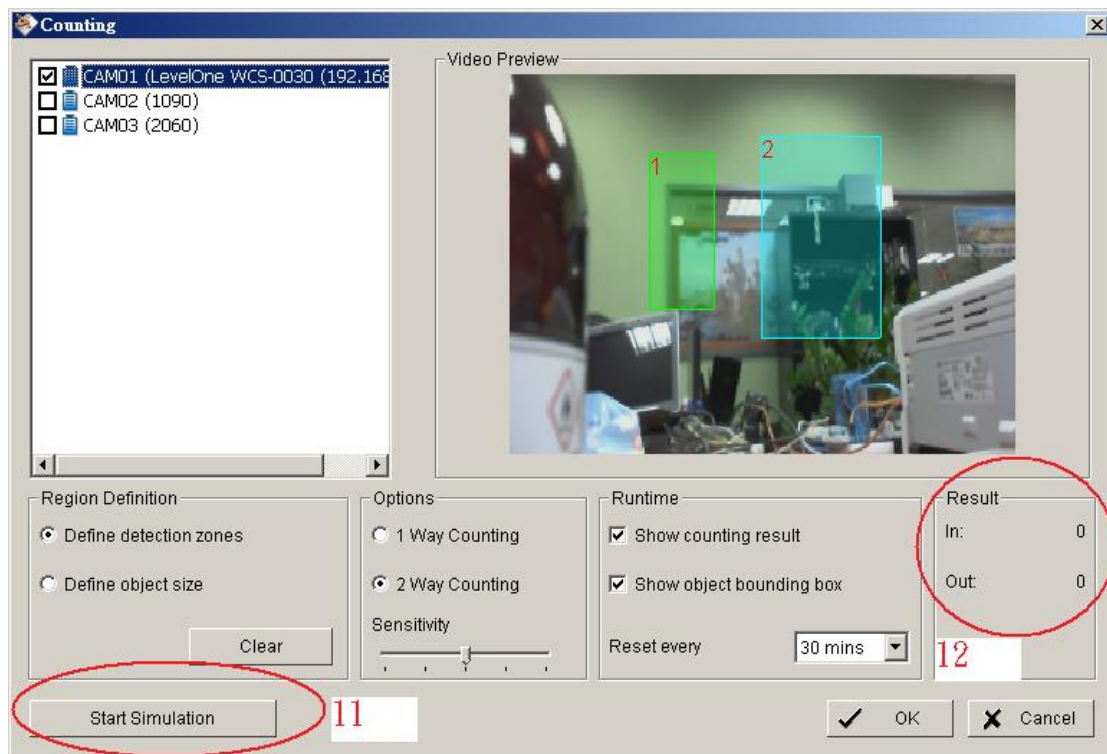
[Define object size] -> [Drag the cursor to draw object size]



[Set option] -> [Set Runtime]



[Start simulation] -> [Simulation result will be shown on Result panel]



[Click on OK and back to Main Console]

3.) Start Counting Application

[Main Console] -> [Start] -> [Start Counting Application]



4.) Counting application

