



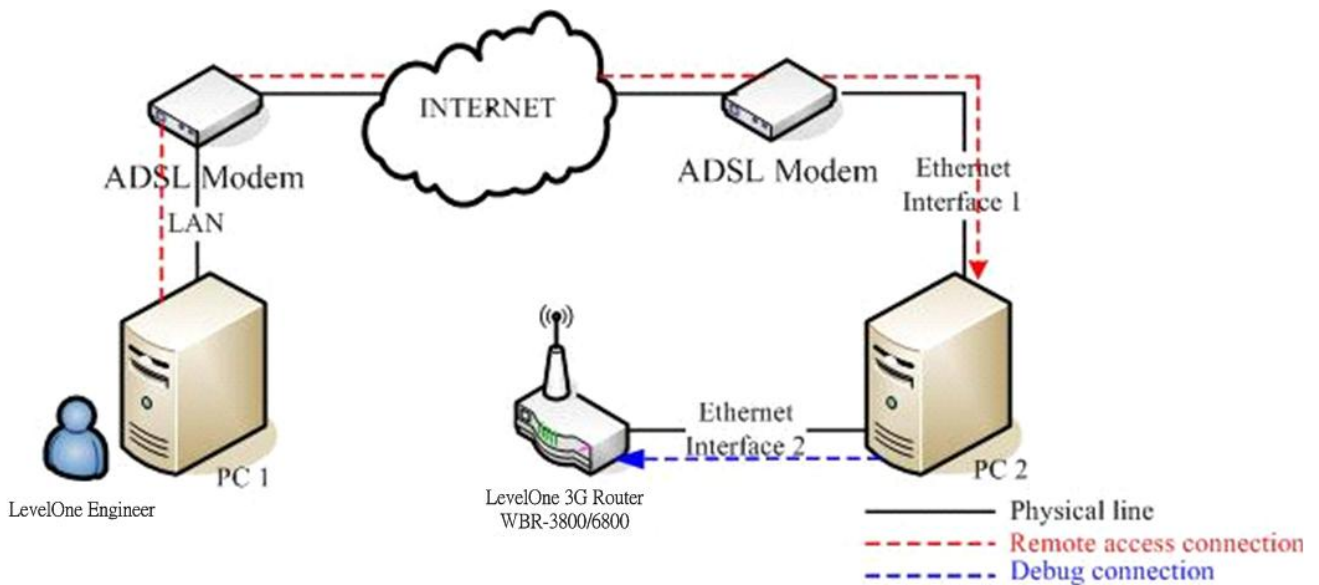
## How to Set Up Remote Access Connection using TeamViewer

### ■ Purpose

Set up a remote access connection to solve 3G modem card issues.

### ■ Setup

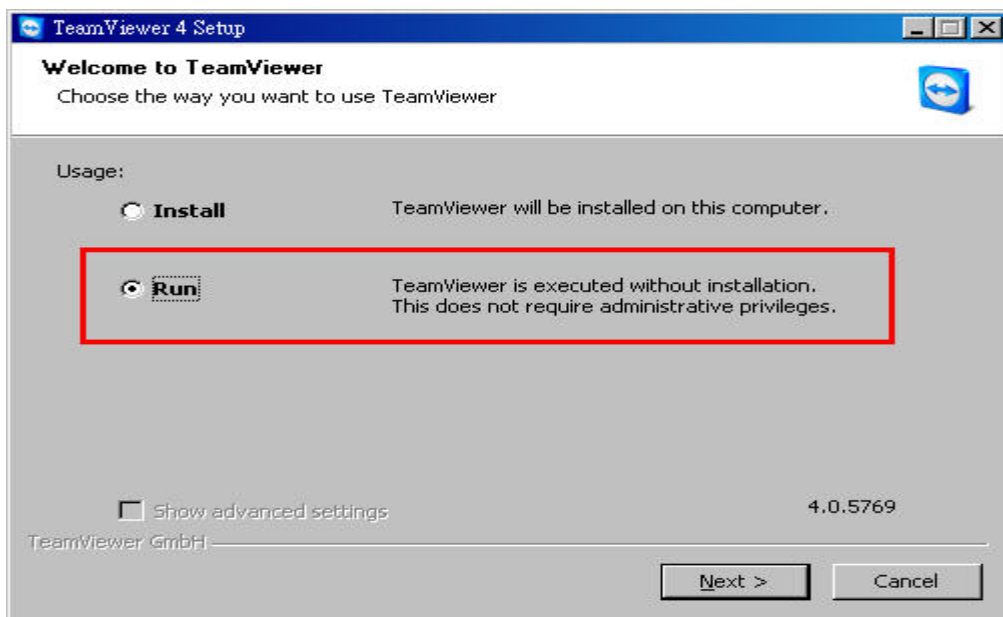
Equipment Configuration Diagram for Remote Access



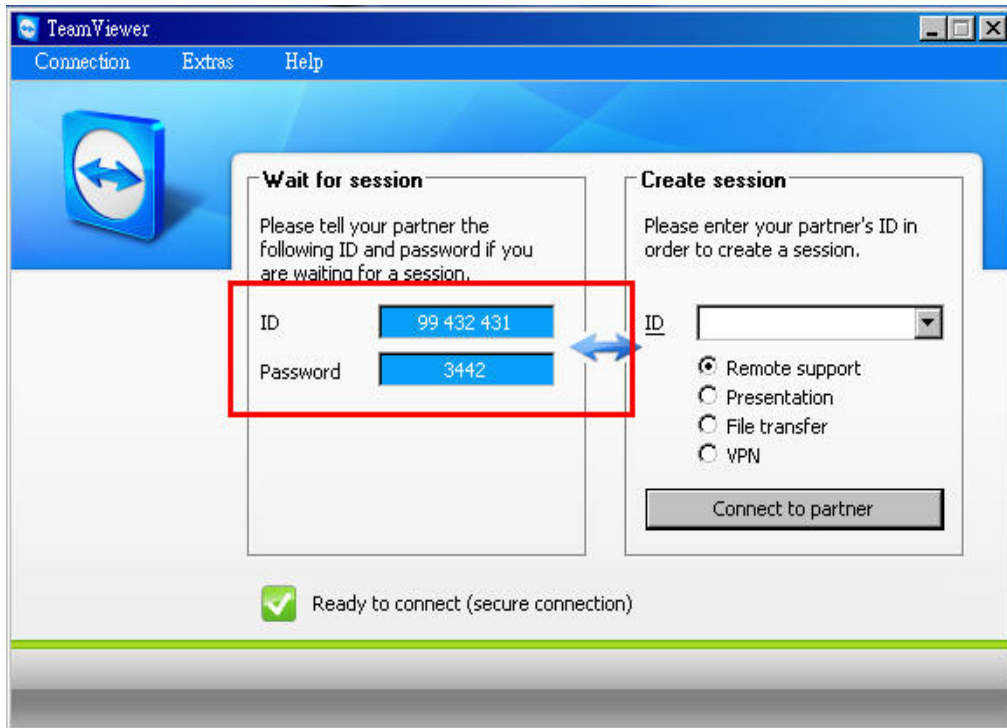
1. PC 1  
LevelOne Engineer will install TeamViewer for remote access.
2. PC 2  
Set up two Interface on PC2. One is for remote access and the other is for debug connection
3. 3G ROUTER  
3G Router with 3G modem card plugged in.
4. Tool:  
<http://www.teamviewer.com/index.aspx>

## ■ Steps

1. Download TeamViewer(<http://www.teamviewer.com/index.aspx>) and execute the file. You can choose the way you want to use TeamViewer.



2. Press Next Button and accept the terms in the License Agreement. You will find ID and Password as following screen capture. Please provide ID/Password to LevelOne engineer for remote connection.



3. LevelOne engineer will login to your PC and build the debug connection with 3G Router.