



How does Recycle & Keep Video Work ?

IP Cam Secure
LevelOne

HDD & Recording

For system HD

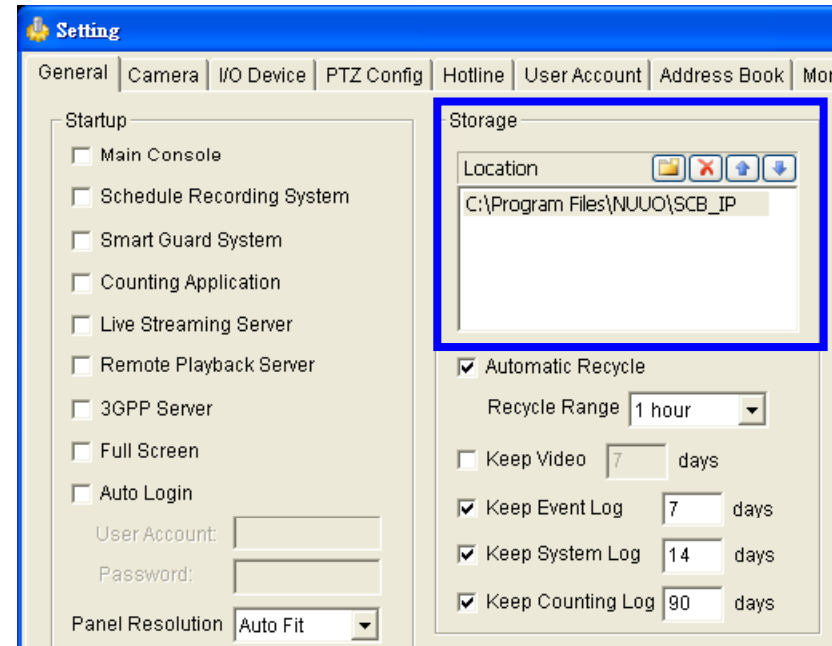
Recording will stop when HDD is less than 500MB

If you have enabled Recycle function

Recycle will work when HDD is less than 1200MB

Example : IF HDD = 20 GB

Recording will stop when HDD is less than 500MB



System Space : 10GB

Recording : 9.5GB

Blank : 500MB

IF HDD = 20 GB, enabled Recycle function

Recycle will work when HDD is less than 1200MB



System Space : 10GB

Recording : 8.8GB

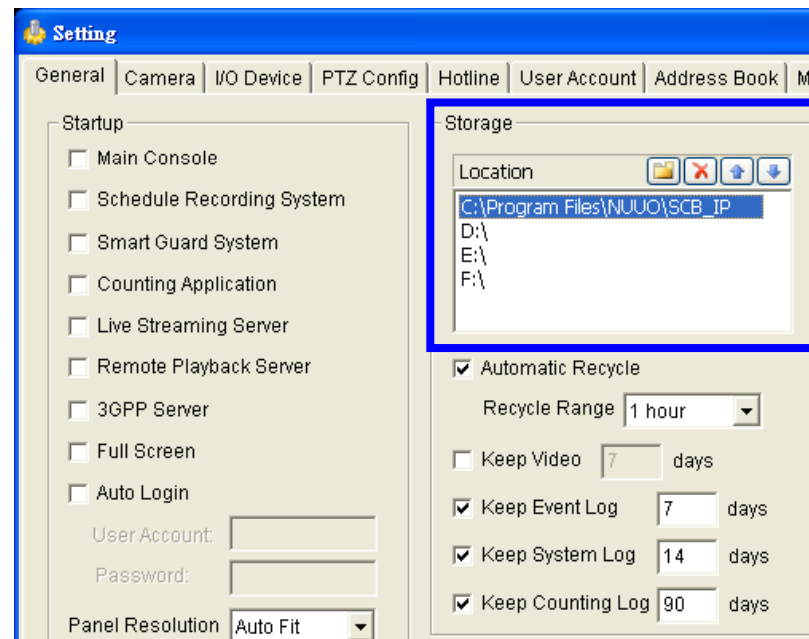
Blank : 1200MB

HDD & Recording

It will change HD to save recording file
 when system HD C:\ is less than 1200MB
 when other HD D:\, E:\, F:\ are less than 800MB

Recording will stop when HDD of final HD F:\ is
 less than 100MB

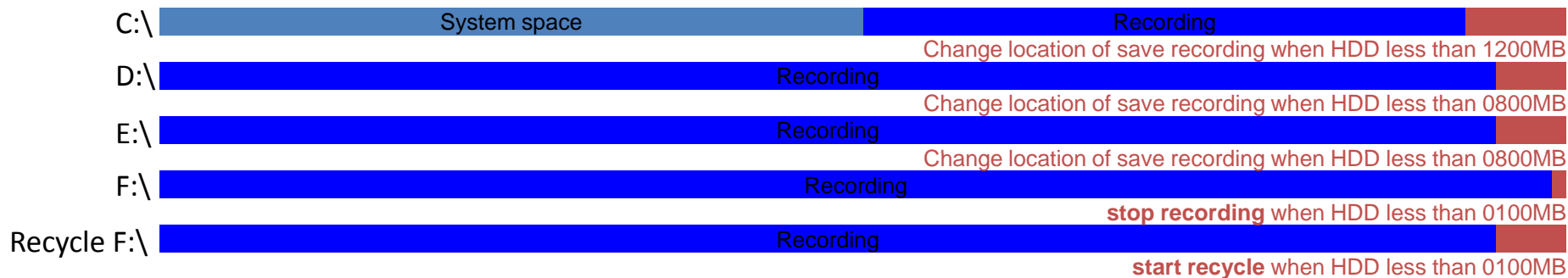
If have enabled Recycle function
 Recycle will work when HDD of final HD F:\ is less
 than 800MB



Example : IF each HDD = 20 GB

Recording will stop when final HDD F:\ less than 100MB

Recycle will work when final HDD F:\ less than 800MB



Set Recycle range 6hrs for 66hrs HDD

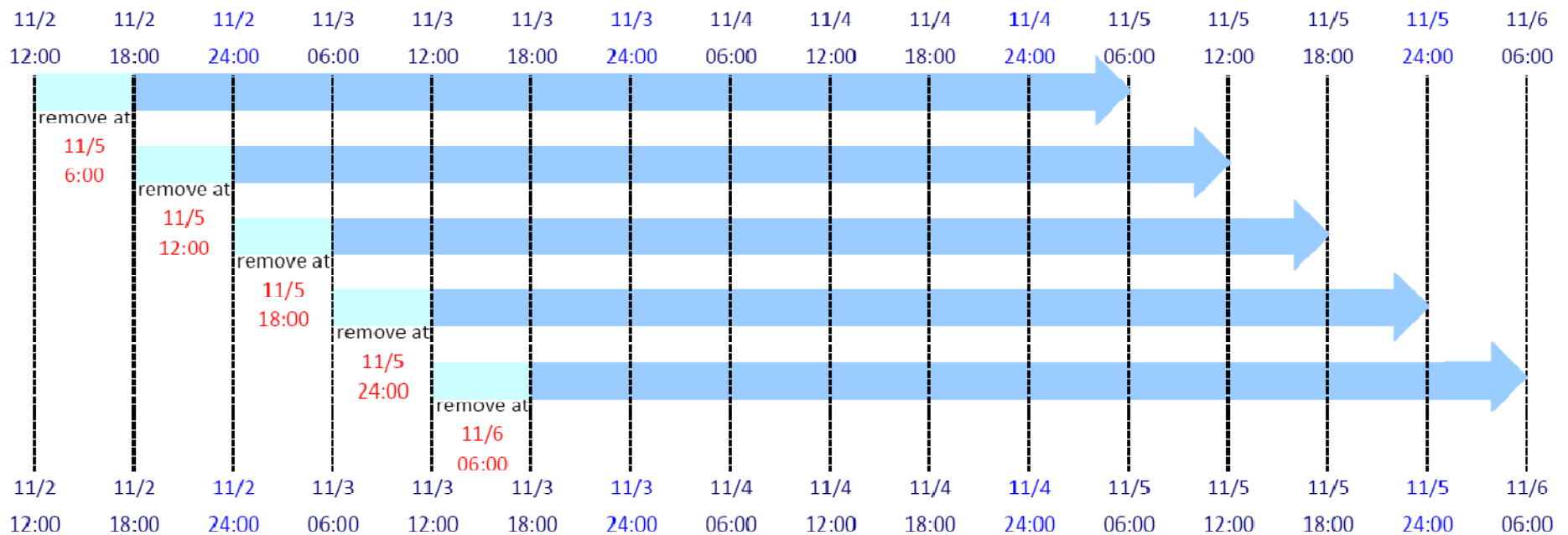
*Recycle function will work on HDD less than 100Mb.

*If HDD capacity can provide 66hrs record, and record start on 11/2 12:00.

*The first time of recycle will be 11/5 6:00, and cuts previous 6hrs data.

*Every 6hrs after 11/5 6:00, it will auto remove previous 6hrs data of recording data.

*If stopping recording on 11/6 4:00, the recording data will be from 11/3 12:00 to 11/6 4:00.



Set Keep Video 3days for 5days HDD

*Keep Video function will work at midnight, 24:00 of local time.

*If HDD capacity can provide 5days record, and record start on 11/3 12:00.

*The first time of remove data will happen at 11/6 24:00, and cuts previous 12hrs data.

*Every midnight after 11/6, it will auto remove previous 1day data of recording data.

*If stop recording on 11/10 20:00, the recording data will be from 11/6 0:00 to 11/10 20:00.

*Although function is set to keep video for 3days, but it may save video more than 3day until next midnight. Be careful to set keep video range, because full capacity will result in recording being stopped.

