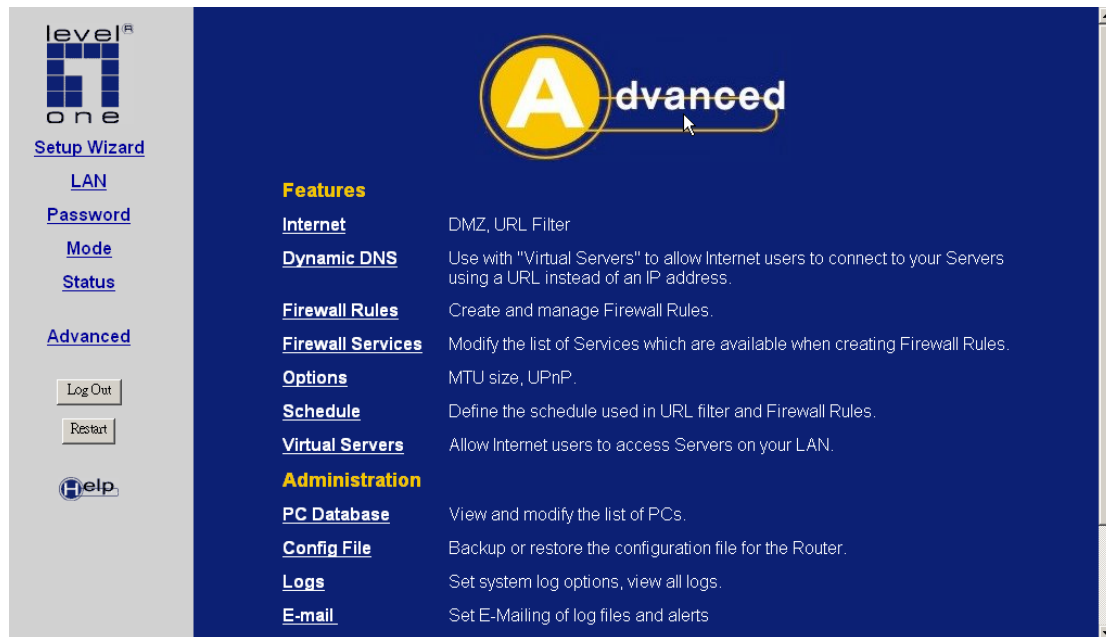


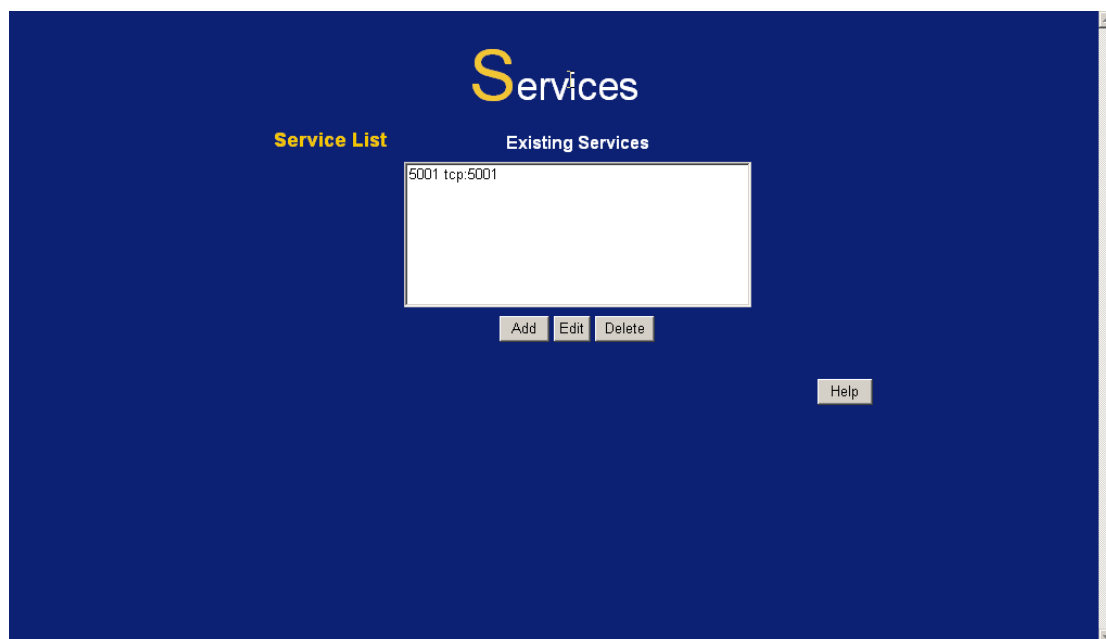
How to do Port Forwarding for FBR-1416 and WBR-3407

1. Add port in Firewall service.
2. Add the PC into PC Database.
3. Add Firewall rule with the port defined in Firewall service.

1. Please click on "Firewall Service".



2. Click on "Add".



3. Enter the port you want open then save.

Add/Edit Service

Name:

Type:

Start Port:

Finish Port:

4. Please click on "PC Database".

level one
Setup Wizard

- LAN
- Password
- Mode
- Status
- Advanced**
- Log Out
- Restart
- Help

Advanced

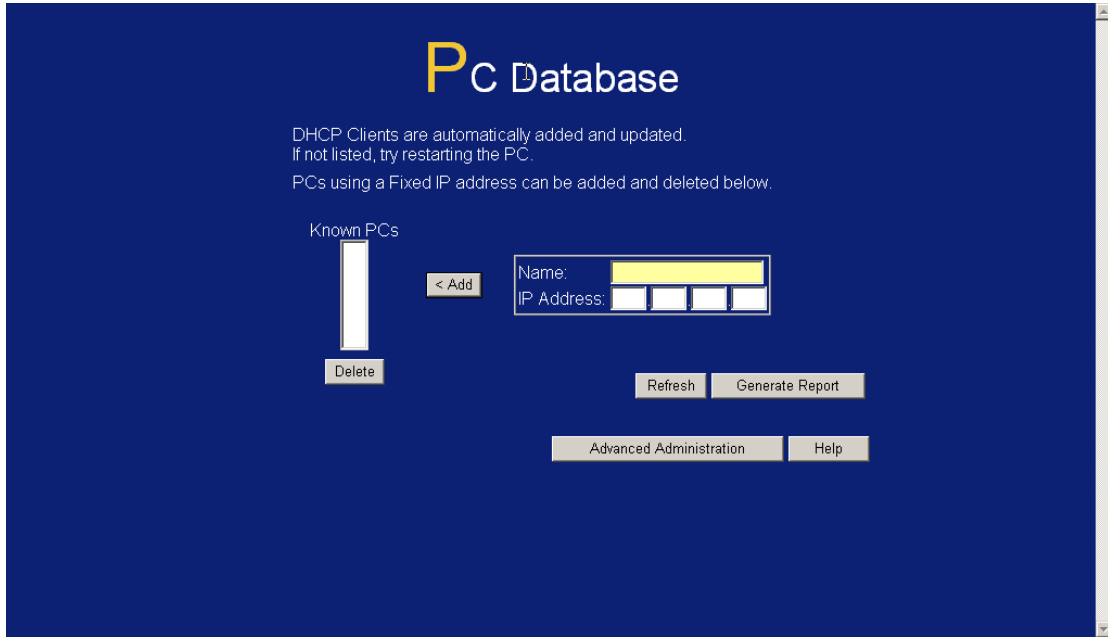
Features

Internet	DMZ, URL Filter
Dynamic DNS	Use with "Virtual Servers" to allow Internet users to connect to your Servers using a URL instead of an IP address.
Firewall Rules	Create and manage Firewall Rules.
Firewall Services	Modify the list of Services which are available when creating Firewall Rules.
Options	MTU size, UPnP.
Schedule	Define the schedule used in URL filter and Firewall Rules.
Virtual Servers	Allow Internet users to access Servers on your LAN.

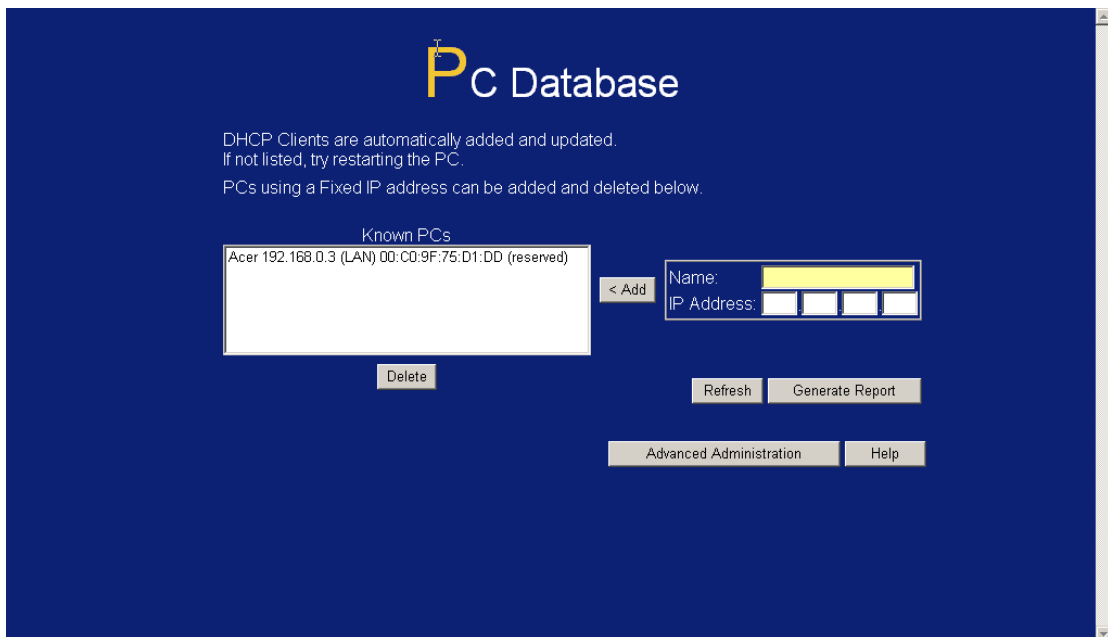
Administration

PC Database	View and modify the list of PCs.
Config File	Backup or restore the configuration file for the Router.
Logs	Set system log options, view all logs.
E-mail	Set E-Mailing of log files and alerts

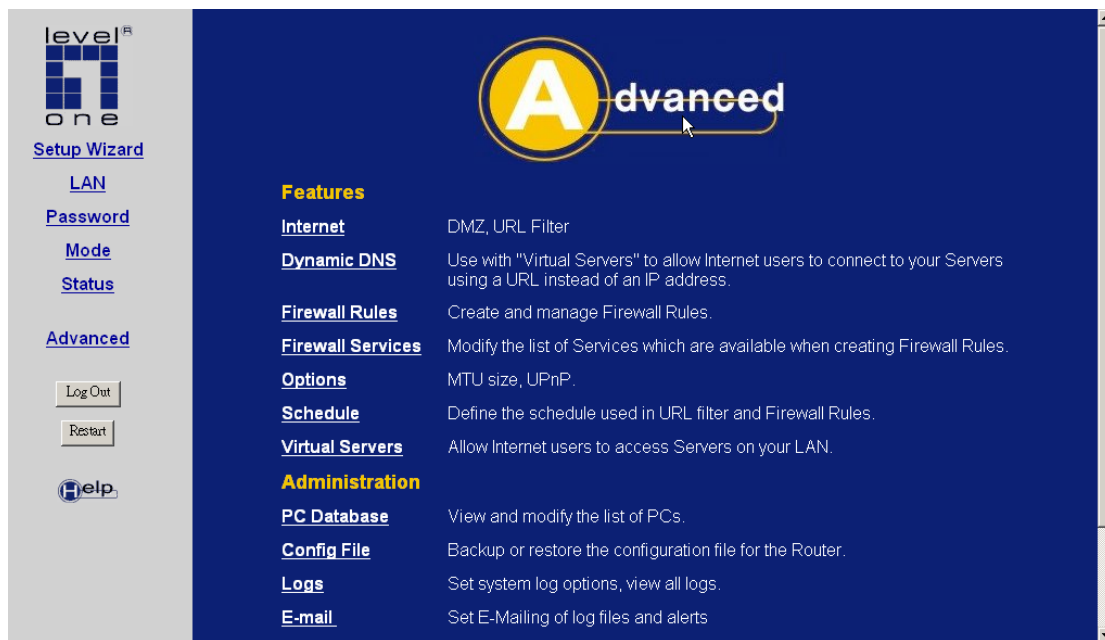
5. Please name the PC and enter it's IP address and click on "Add".



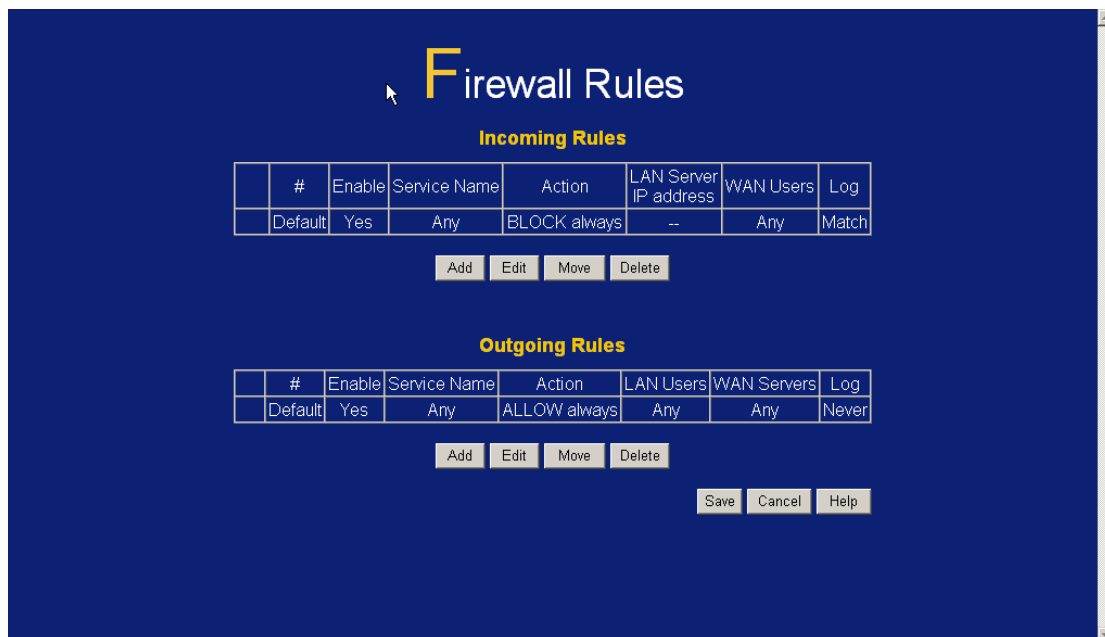
6. PC is added in the PC Database.



7. Then go to firewall rule.



8. Please click on "Add" on Incoming Rules.



- In the Service drop down menu, you should be able to see the port you had just created in the Firewall Service.
- Select "ALLOW Always" in Action menu.
- In the Send to LAN server Drop down menu, please select the PC you want to forward the port to.
- Please remember to save once you finish setting.

Inbound Services

Service:

Action:

Send to LAN Server:

WAN Users:

Single/Start: . . .

Finish: . . .

Log: