

LevelOne 無線網路卡如何使用 X-Link 對戰 PSP

支援的型號：**WNC-0301USB V1/V2, WNC-0303USB V1, WNC-0304USB V1**

X-Link 版本：**XLinkKai-7.1.7.6-win32**

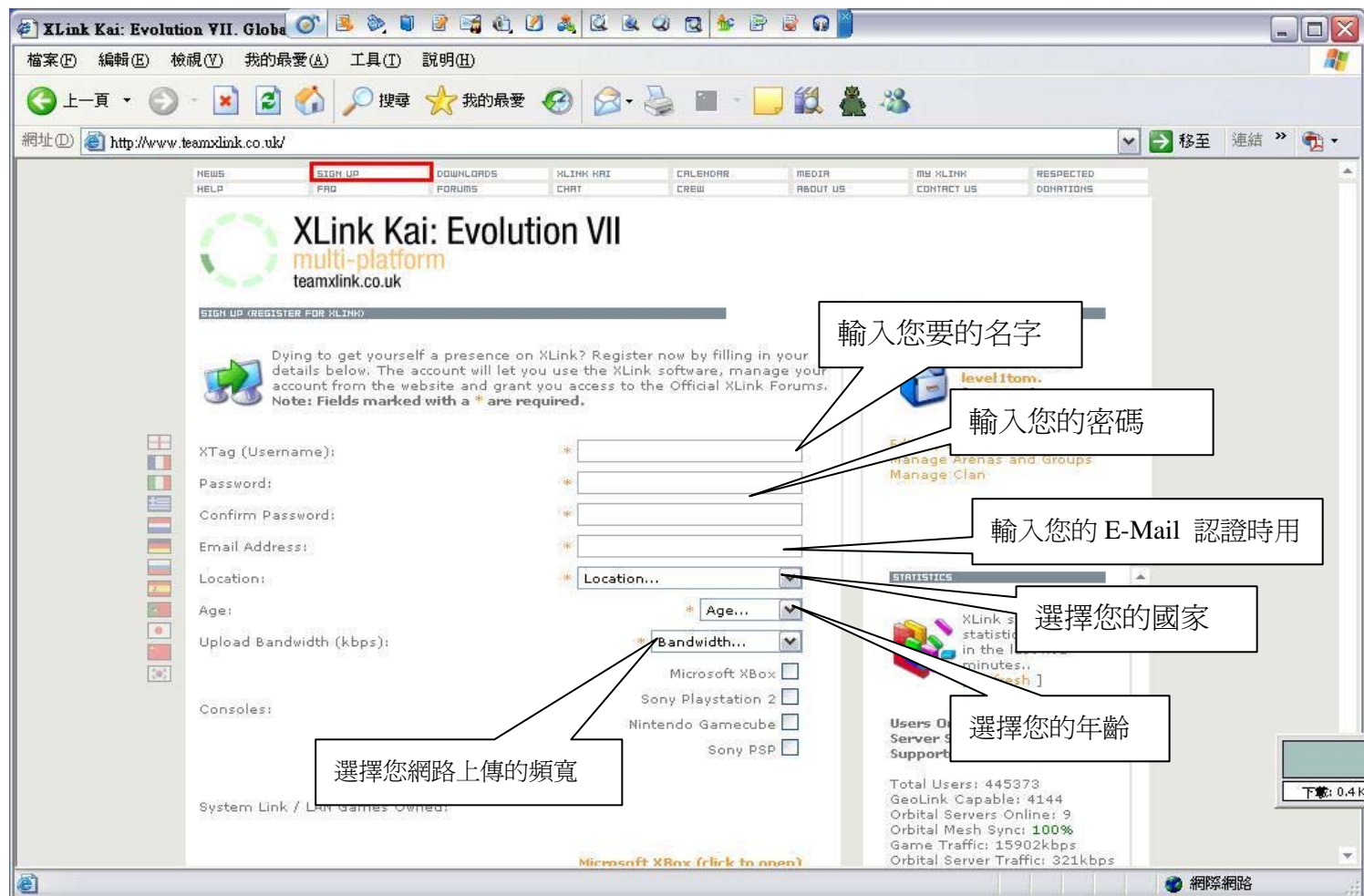
Driver 版本：**6.3.0.0** Utility：**2.21.0.0**



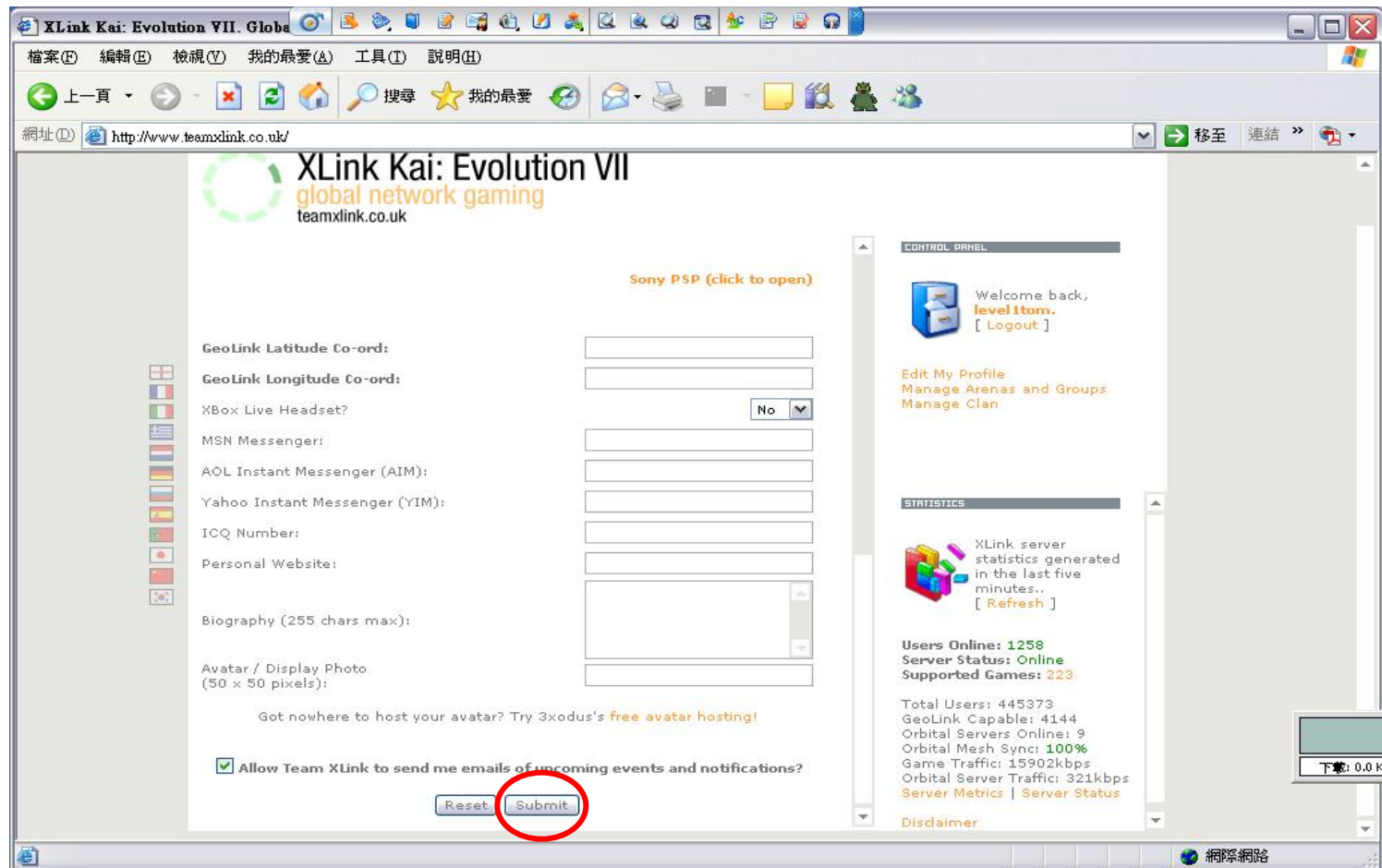
Quick Installation Guide

請先至<http://www.teamxlink.co.uk/> 註冊。

點選 SIGN UP



輸入完成按下 Submit



登入您的信箱，按下認證。

Content-Transfer-encoding: 8bit
To: 206c.c@yahoo.com.tw
From: support@teamxlink.co.uk
Reply-to: <support@teamxlink.co.uk>
Return-path: <support@teamxlink.co.uk>
Message-ID: <a186330af5962f1634cdc4ce4cf31dc4@www.teamxlink.co.uk>
X-Priority: 1
X-MSmail-Priority: High
X-Mailer: Microsoft Office Outlook, Build 11.0.5510
X-MimeOLE: Produced By Microsoft MimeOLE V6.00.2800.1441
X-Sender: support@teamxlink.co.uk
X-AntiAbuse: This is a solicited email for - teamxlink.co.uk
X-AntiAbuse: Servername - www.teamxlink.co.uk

Well done level1tom!

Thank you for deciding to become a part of Global Network Gaming.
Before you can use the service however, you will need to complete your registration by clicking on the following account confirmation link:

<http://www.teamxlink.co.uk/?go=confirm&randid=rOGrevvvoxgilPLIR>


If the link above does not work, just copy and paste it into your web-browser's address bar.

Regards,

support@teamxlink.co.uk

按下 DOWNLOADS，選擇您的系統。


NEWS	SIGN UP	DOWNLOADS	XLINK KAI	CALENDAR	MEDIA
HELP	FAQ	FORUMS	CHAT	CREW	ABOUT US



XLink Kai: Evolution VII

experienced gamers society
teamxlink.co.uk

DOWNLOADS

 You've obviously come here for all the right reasons. You've seen the light, and come to the realisation that **nothing** compares to XLink Kai: Evolution VII...
Note: To extract .zip files, we recommend you use WinRAR, available [here](#).

Downloads

Windows XP / 2000 / ME / 98se / 98

Notes

The Windows clients (except WindowsXP) require you have the Windows Installer Redistributable installed. You can get it from [Windows 95, 98 and ME here](#) or [WindowsNT 4 and Windows 2000 here](#).

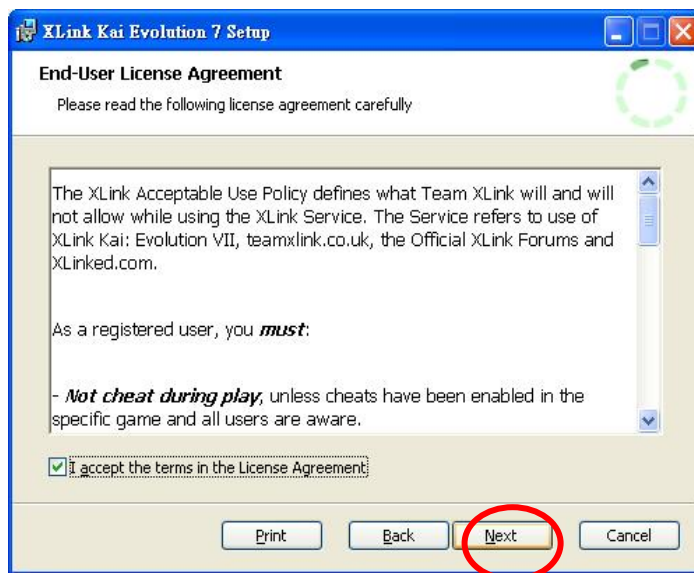
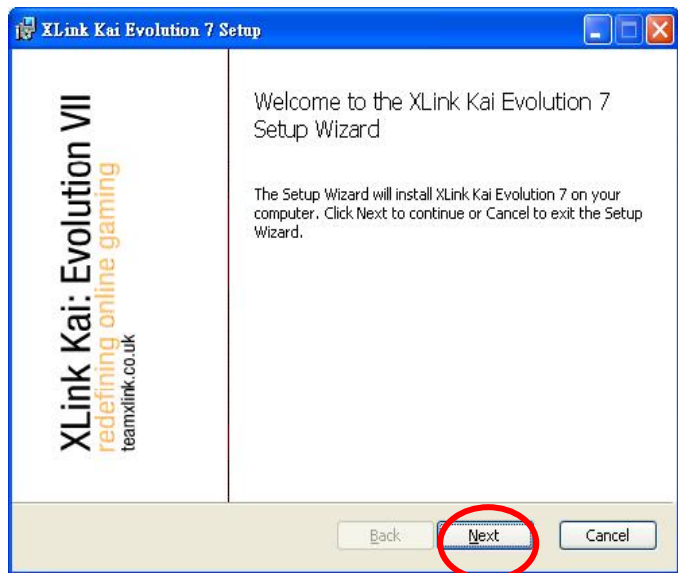
Macintosh users who are inexperienced with using the OSX terminal should download the GUI version instead of the terminal version.

Details

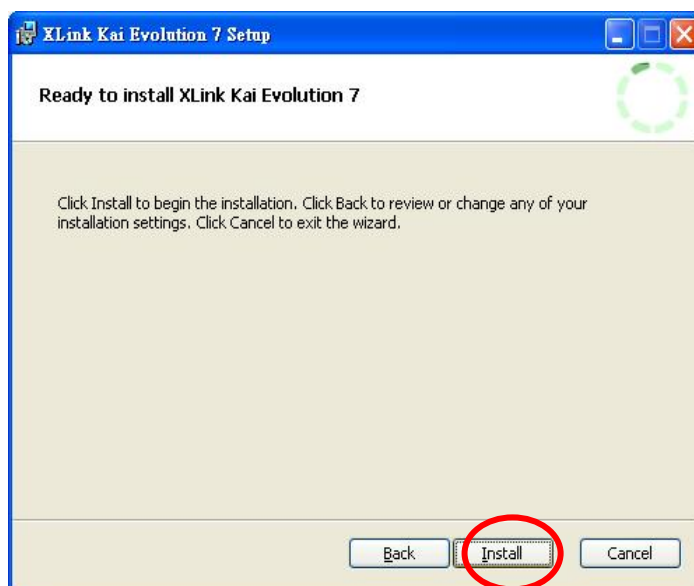
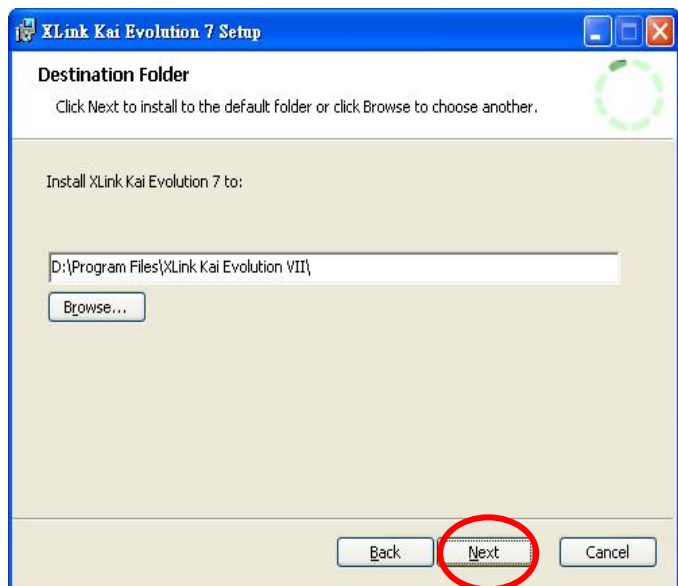
執行



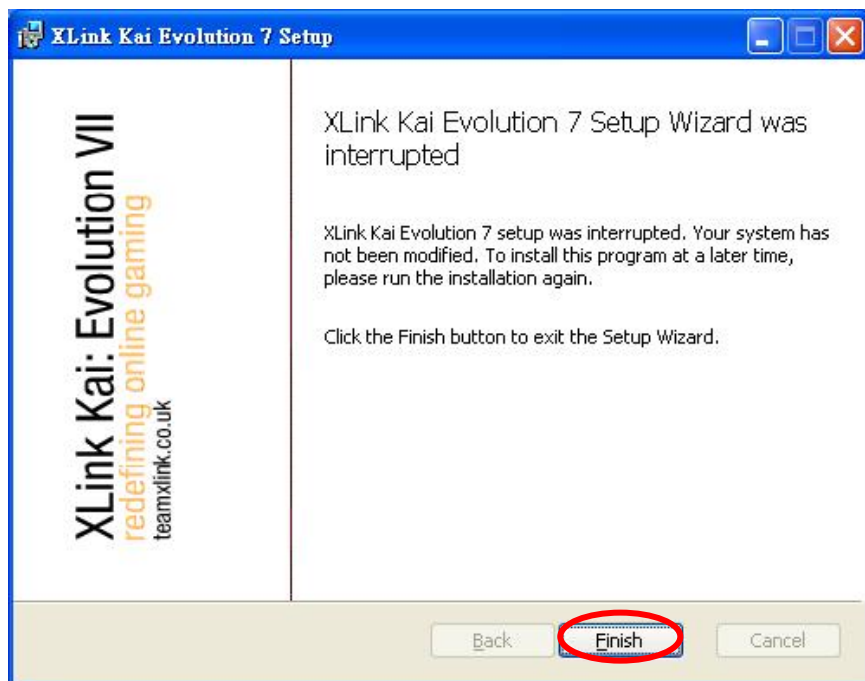
按 Next,



選擇您要的路徑，按下 next。

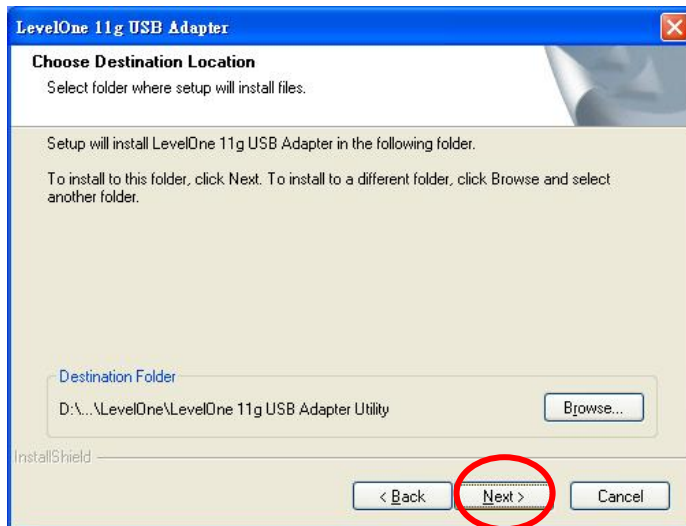
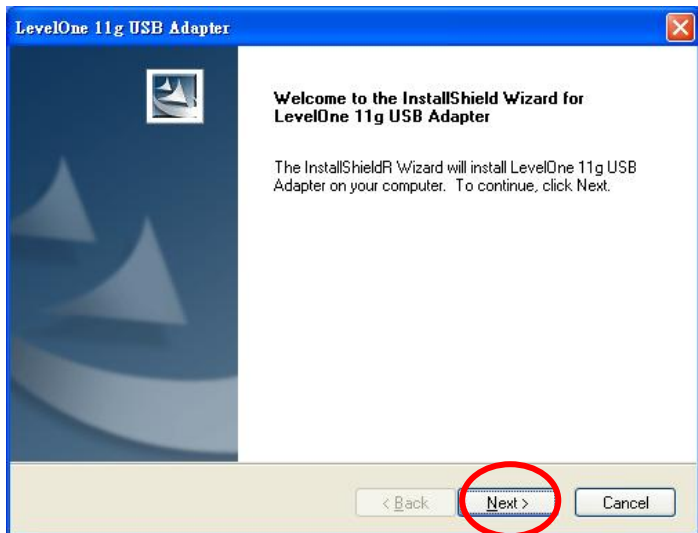


安裝完成 X-Link 程式。

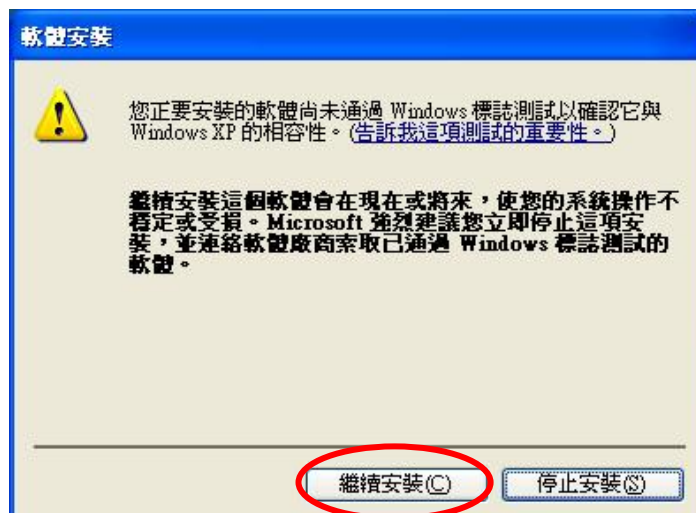
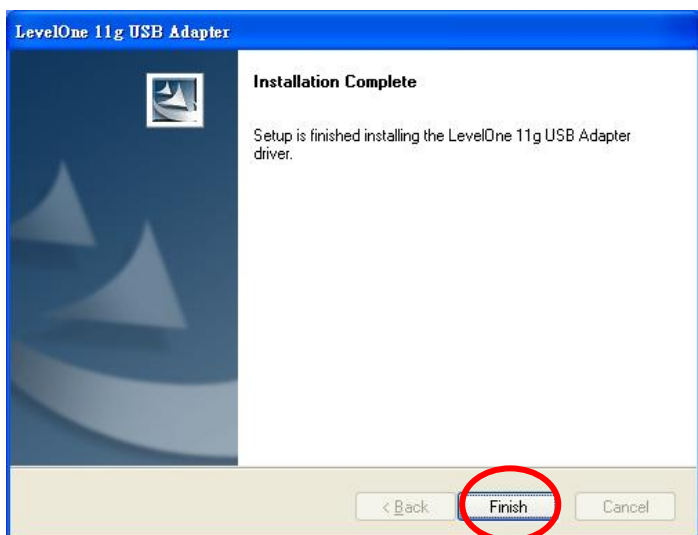


安裝 LevelOne 無線網路卡。

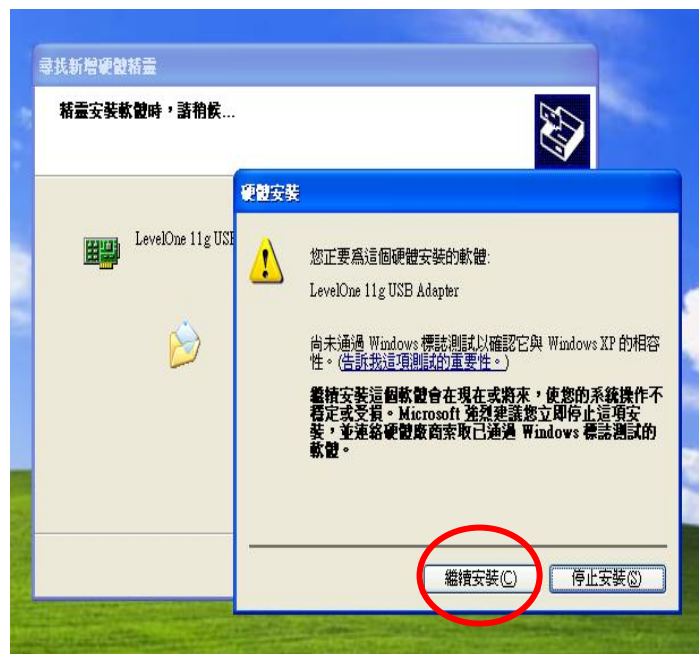
按 next



安裝完成



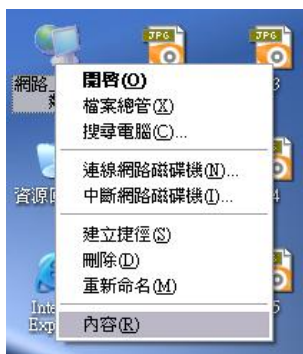
按下一步



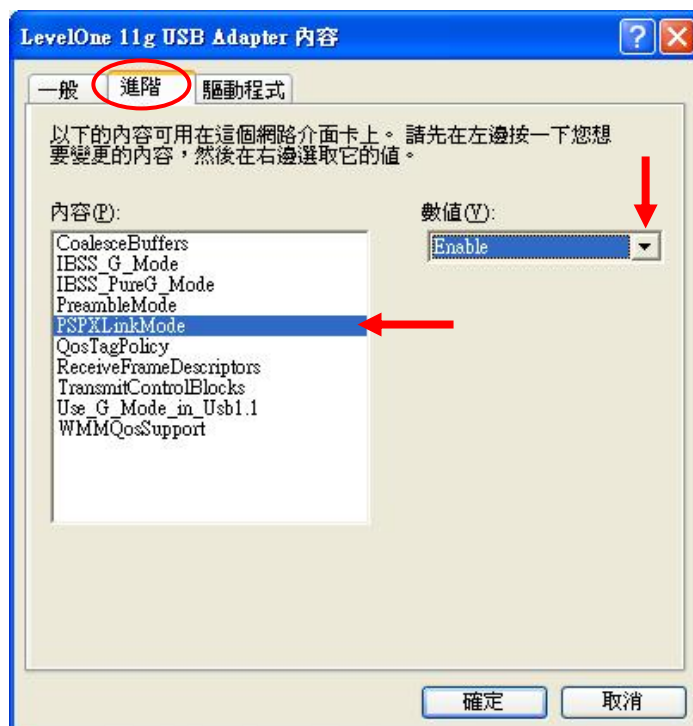
安裝完成。



安裝完成後，開始設定 LevelOne 無線網路卡與 X-Link 網路上的芳鄰按鍵選內容

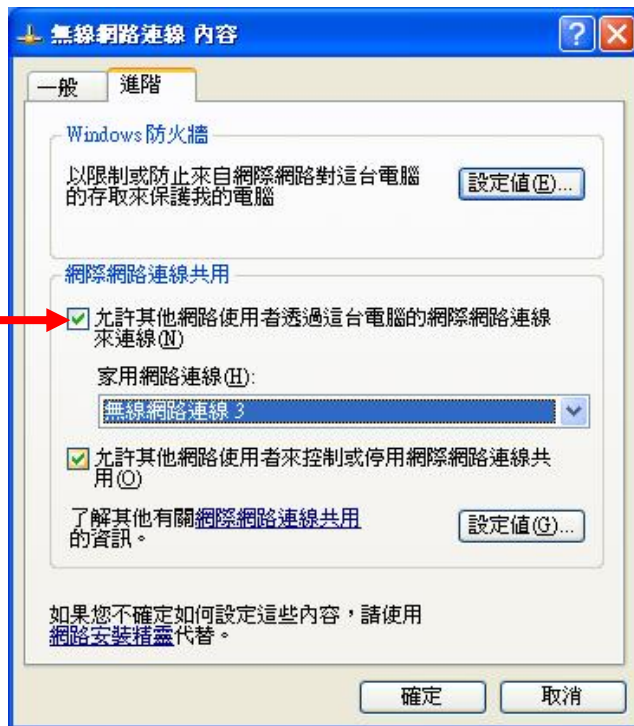
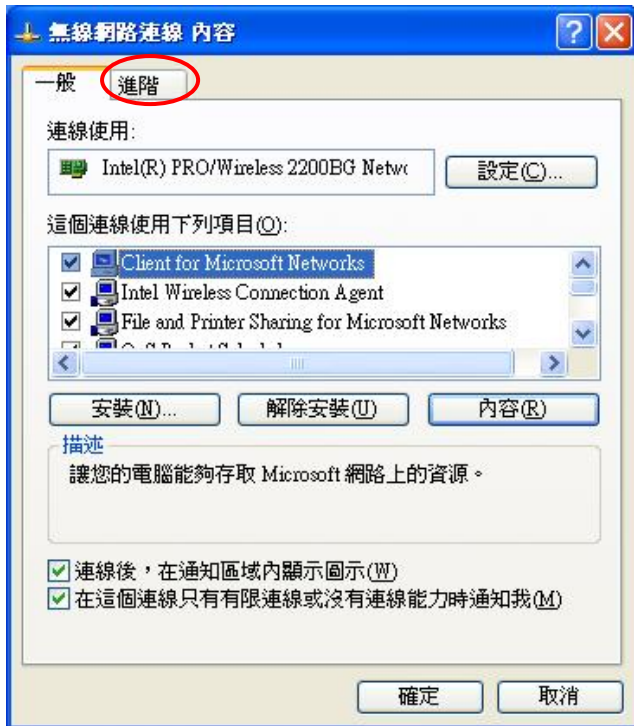


選擇 LevelOne 無線網路卡按右鍵選內容→點選設定→進階→Enable PSPXLinkMode

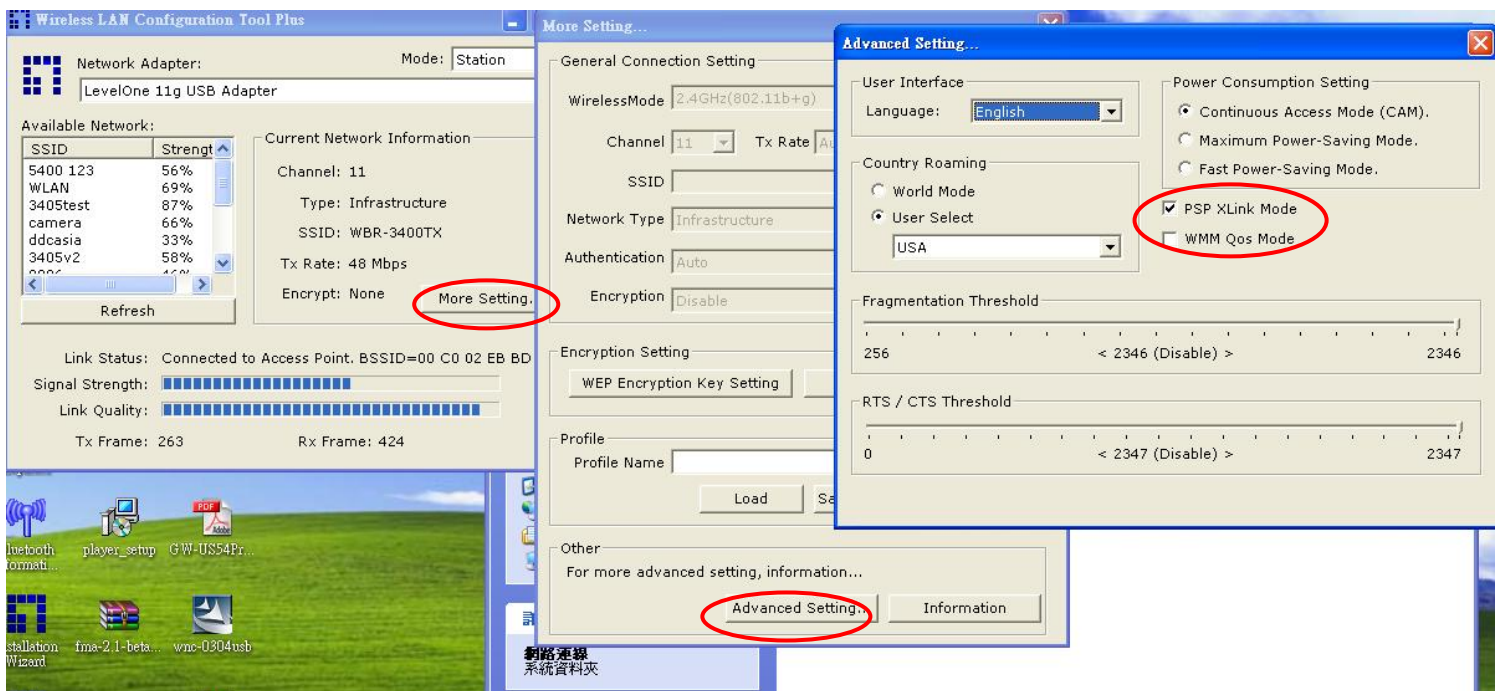


選擇您連接 Internet 的網路卡 例：Intel wireless2200BG

選擇網路卡按右鍵內容→進階，打勾分享給 LevelOne 無線網卡。



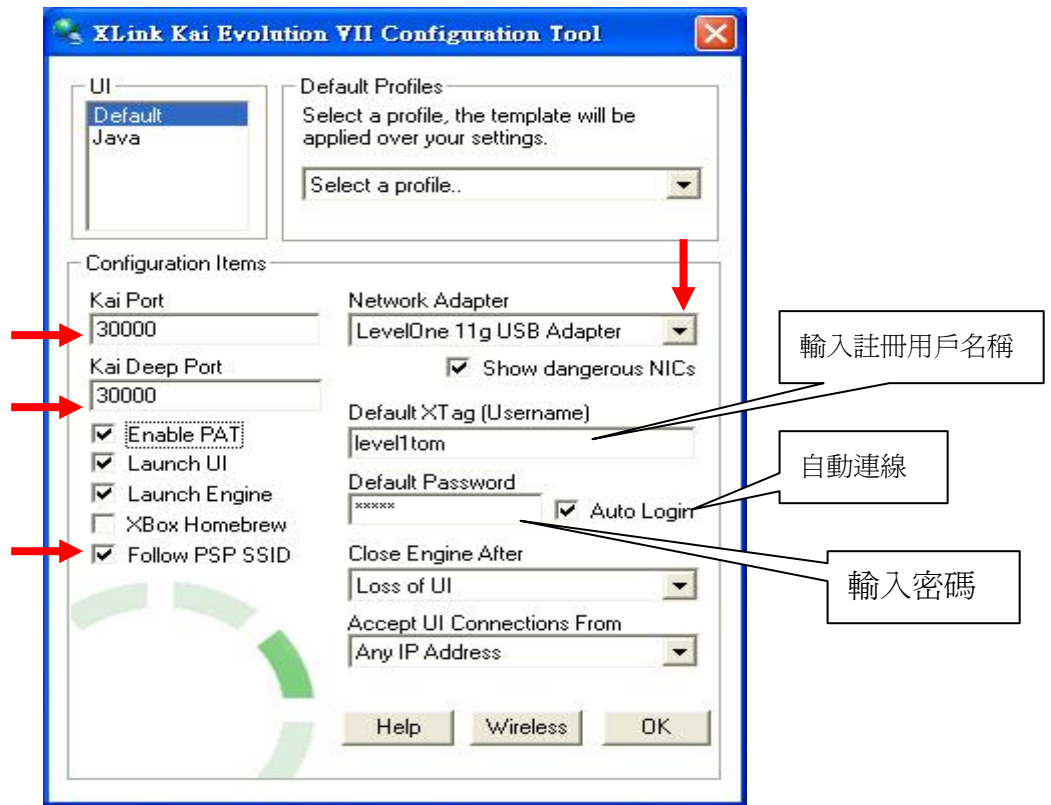
進入 LevelOne 無線網路卡



進入 X-Link Config 設定



請依圖解設定，設定完成按 OK



請開啓PSP的無線功能，進入遊戲。

範例：用日文版<實感賽車Ridge Racer>

參照圖解流程操做。

圖一



圖二



圖三



圖四



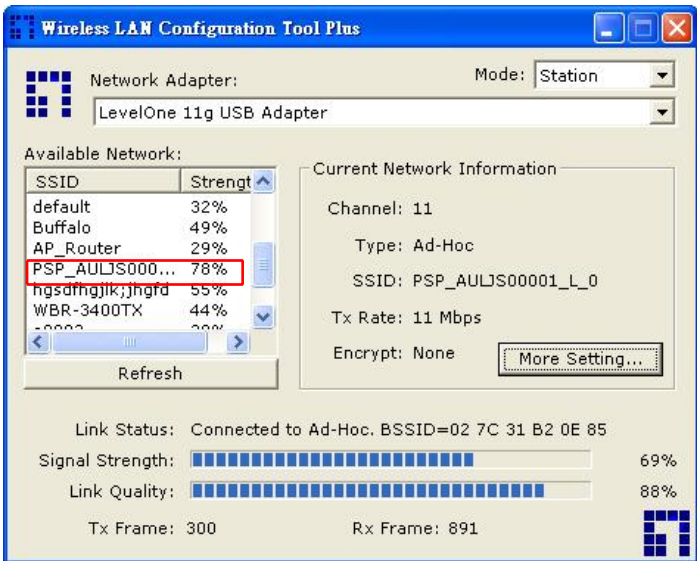
圖五



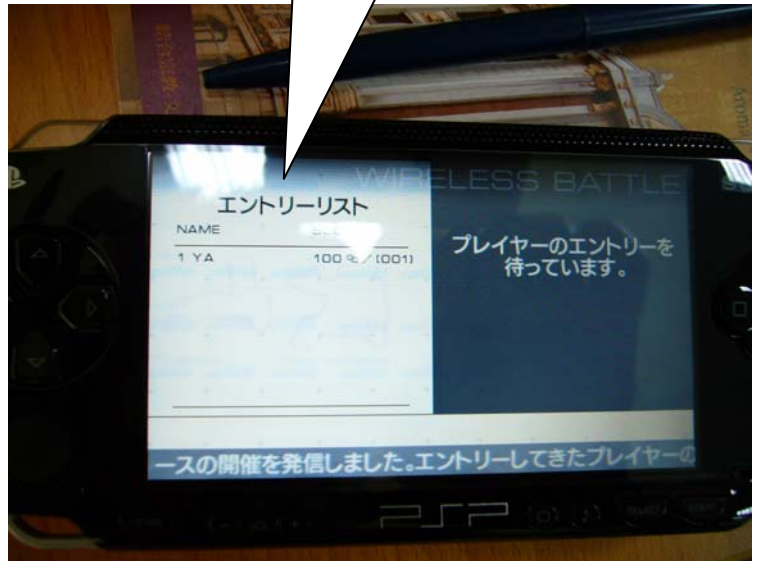
圖六



開啓 LevelOne 無線網卡，尋找 PSP 做連線。



與 X-Link 連線成功

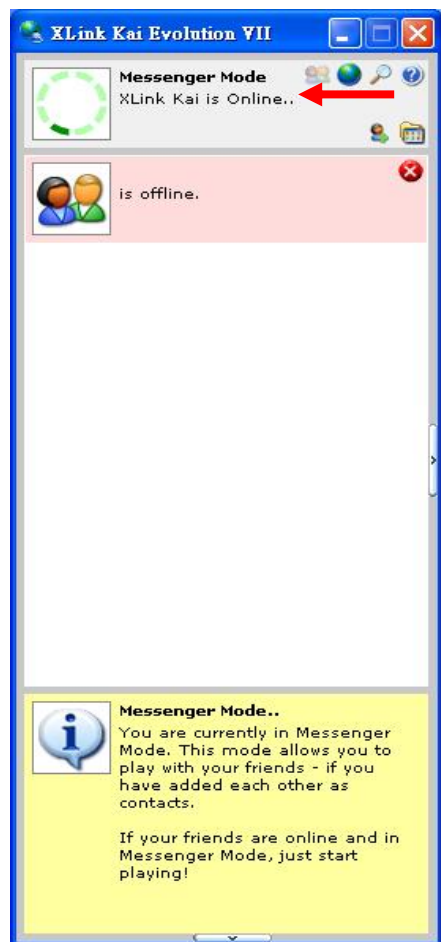


執行 X-Link



出現 XLink Kai is Online 表示連線成功。

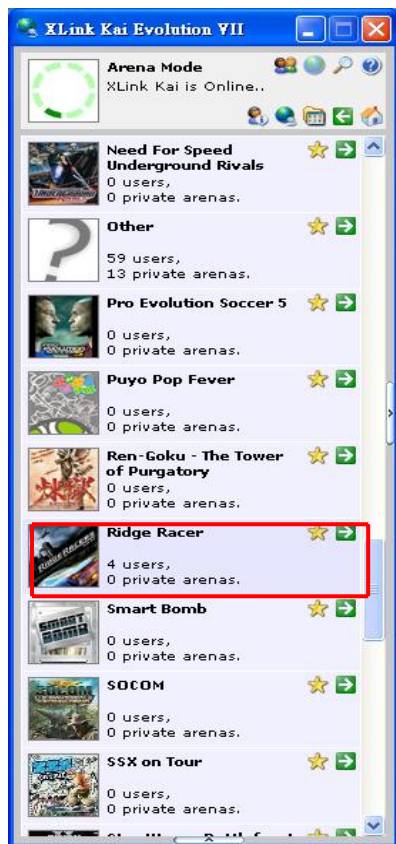
請先選點→連線狀況→轉換視訊，確定 PSP 與 X-Link 有連線成功。



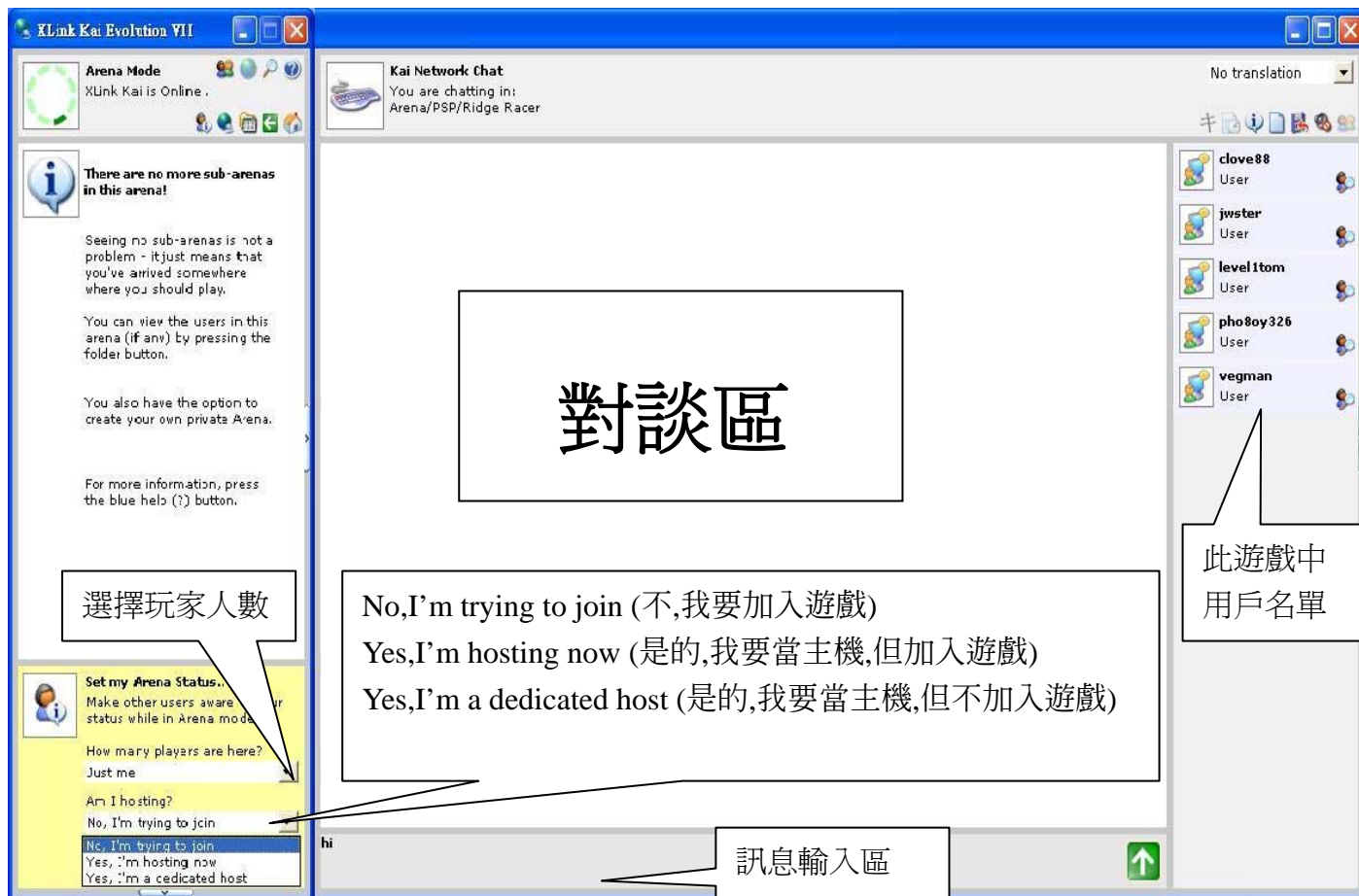
加入我的最愛

進入遊戲

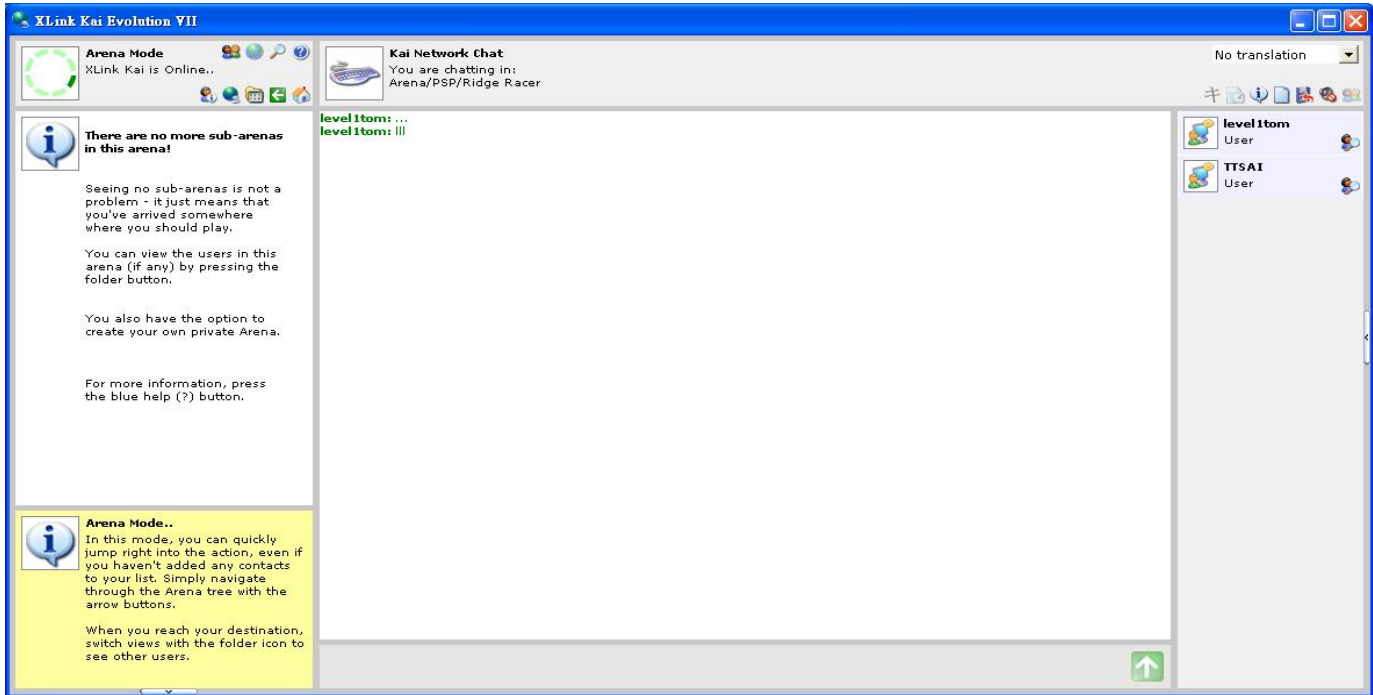
進入對戰區選擇遊戲 **Ridge Racer**



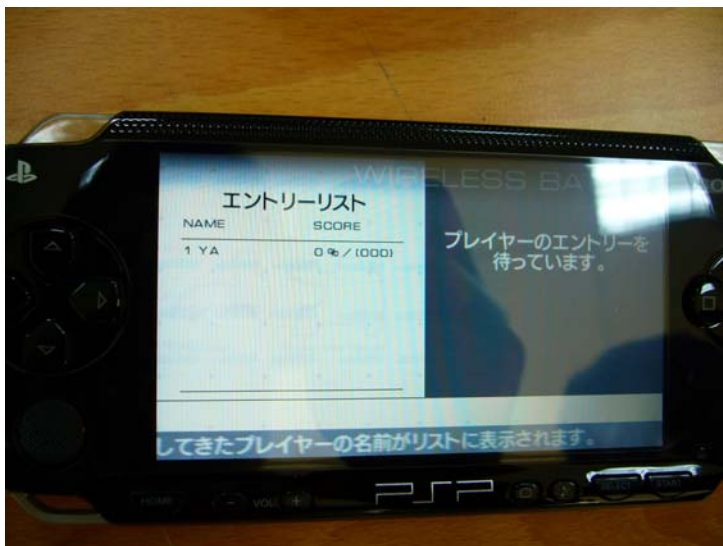
進入遊戲



選擇 Yes,I'm hosting now 開啓主機，另 1 台選擇 No,I'm trying to join
此時已有 2 位玩家可開始遊戲。



Host 開好等待玩家加入



要加入遊戲的另 1 台 PSP 搜尋中



搜尋到加入遊戲



HOST 發現另一台 PSP 玩家加入，按下 START 即可開始對戰。

