



Bluetooth for Windows (BTW) Installation Instructions

March 6, 2002

Document Number: Readme.doc (S0003-0024)

Version: 2.8

Confidential and Proprietary Information



Wireless Internet and Data Communication

9645 Scranton Road, Suite 205

San Diego, CA 92121

Phone: 858.453.8400

Fax: 858.453.5735

Email

Technical Support: support@widcomm.com

Information: info@widcomm.com

BTW Installation Instructions

LICENSED SOFTWARE

© Copyright 2000 – 2001, WIDCOMM, Inc. (“WIDCOMM”). All rights reserved.

Warning: This software and accompanying documentation are protected by copyright law and international treaties. Unauthorized reproduction or distribution of this software, or any portion of it, may result in severe civil and criminal penalties, and will be prosecuted to the maximum extent possible under the law.

Use of this software is governed by the terms of the end user license agreement that accompanies or is included with such software. Unless otherwise noted in the end user license agreement, or herein, no part of the documentation accompanying this software, whether provided in printed or electronic form may be reproduced in any form, or stored in a database or retrieval system, or transmitted in any form or by any means, or used to make any derivative work (such as translation, transformation, or adaptation) without the express, prior written consent of WIDCOMM.

Trademark(s) TM and Registered Trademark(s) [®]

WIDCOMM and the WIDCOMM logo are trademarks of WIDCOMM, Inc.

The Bluetooth trademark is owned by the Bluetooth SIG, Inc., and used by WIDCOMM under license.

Microsoft and Windows are registered trademarks of Microsoft Corporation.

InstallShield® Wizard is a registered trademark of InstallShield Software Corporation.

Other brand and product names may be registered trademarks or trademarks of their respective holders.

Table of Contents

1	INSTALLING BLUETOOTH FOR WINDOWS (BTW).....	1
1.1	SYSTEM REQUIREMENTS.....	1
1.2	UNINSTALL PREVIOUS VERSION OF BTW	1
1.3	INSTALL BTW	1
1.3.1	Windows 98 Second Edition (SE) and Windows Millennium Edition (Me).....	1
1.3.2	InstallShield Wizard.....	1
1.4	LICENSE KEYS.....	2
1.4.1	Expired License or Unlicensed Version of BTW.....	3
	APPENDIX A—INSTALLSHIELD WIZARD SCREEN SHOTS.....	4
	APPENDIX B—RELEASE NOTES	11
2	BTW 1.2.1.9 RELEASE NOTES	12
2.1	BLUETOOTH NEIGHBORHOOD	12
3	BTW 1.2.1.10 RELEASE NOTES.....	13
3.1	BLUETOOTH NEIGHBORHOOD	13
3.2	DRIVER	13
3.3	INSTALL	13
3.4	STACK SERVER.....	13
4	BTW 1.2.1.11 RELEASE NOTES.....	14
4.1	BLUETOOTH NEIGHBORHOOD	14
5	BTW 1.2.1.13 RELEASE NOTES.....	15
5.1	DRIVER	15
6	BTW 1.2.1.14 RELEASE NOTES.....	16
6.1	DRIVER	16
7	BTW 1.2.1.15 RELEASE NOTES.....	17
7.1	DRIVER	17
8	BTW 1.2.1.16 RELEASE NOTES	18
8.1	BLUETOOTH NEIGHBORHOOD	18
8.2	STACK SERVER.....	18
8.3	DRIVER	18
9	BTW 1.2.1.21 RELEASE NOTES.....	19
9.1	BLUETOOTH NEIGHBORHOOD	19
9.2	DRIVERS.....	19
9.3	INSTALLATION.....	19
10	BTW 1.2.2.1 RELEASE NOTES.....	20
10.1	STACK SERVER.....	20
10.2	DRIVER	20
10.3	INSTALLATION.....	20
11	BTW 1.2.2.4 RELEASE NOTES.....	21
11.1	INSTALLATION.....	21
11.2	USER INTERFACE.....	21
11.3	STACK SERVER.....	21
12	KNOWN ISSUES.....	22

List of Figures

Figure 1:	Widcomm Bluetooth Software License dialog box.....	3
Figure 2:	Start-up dialog box.	4
Figure 3:	Welcome screen.	4
Figure 4:	Remove the Program screen.	4
Figure 5:	Uninstalling the previous version of BTW screen.	6
Figure 6:	License Agreement screen.....	6
Figure 7:	Customer Information screen.	6
Figure 8:	Device Information screen.	7
Figure 9:	Destination Folder screen.	7
Figure 10:	Change Current Destination Folder screen.	8
Figure 11:	Ready to Install the Program screen.	8
Figure 12:	Installing Widcomm Bluetooth Software screen.....	9
Figure 13:	InstallShield Wizard Completed screen.	10

1 Installing Bluetooth for Windows (BTW)

1.1 SYSTEM REQUIREMENTS

Bluetooth for Windows (BTW) runs under Microsoft® Windows® 2000, Windows 98 Second Edition (SE), and Windows Millennium Edition (“Me”).

1.2 UNINSTALL PREVIOUS VERSION OF BTW

Any previous version of the BTW software must be uninstalled before installing an upgraded version.

There are two ways to remove BTW:

1. The InstallShield® Wizard automatically uninstalls the previous version when a new version is installed.
2. Manually uninstall BTW by completing these steps:
 - a) Close any open applications.
 - b) From the Windows taskbar, click **Start** followed by **Settings** followed by **Control Panel**.
 - c) Double-click **Add/Remove Programs**.
 - d) On the *Add/Remove Programs* window, select the Widcomm Bluetooth Software entry. Scroll down if necessary.
 - e) Click the **Change/Remove** button (Windows 2000). The InstallShield Wizard is started.
 - f) Click **OK** on the *Confirm File Deletion* window to remove the Widcomm Bluetooth Software and all of its components.
 - g) When prompted, click **Restart** and then click the **Finish** button.

1.3 INSTALL BTW

1.3.1 Windows 98 Second Edition (SE) and Windows Millennium Edition (Me)

BTW requires that a number of Microsoft® Windows® networking components be installed before BTW can be successfully configured.

If Windows 98SE or Windows Me was installed without the networking components, have the MS Windows CD available during the BTW installation process.

Under normal Windows 2000 installations you should not be prompted for the Windows CD, however you may want to have it on hand.

1.3.2 InstallShield Wizard

Installing BTW is an automated process made easy by the use of the InstallShield Wizard. You will need to:

- Read and acknowledge the License Agreement.
- Fill in some customer information, including the License Key.
(See also Section 1.4.)
- Fill in some device information.
- Make a few choices

InstallShield will uninstall the previous version of BTW, copy the required files, install drivers and virtual COM ports, set up the system registry, and register services.

Screen shots of the InstallShield Wizard installation windows are included in Appendix A, beginning on page 4, for your review if necessary.

Complete these steps to install BTW:

1. Exit all applications.
2. Insert the WIDCOMM BTW CD. The auto-run option will start and the InstallShield Wizard setup dialog box (Figure 2) is displayed. If auto-run does not occur, manually start the setup process—from the Windows taskbar, click **Start** followed by **Run** and select `setup.exe` on the CD.
3. Follow the instructions on the screen:
 - a) On the *Welcome* screen (Figure 3), click the **Next** button.
 - b) (Skip this step if you have already uninstalled any previous version of BTW; see also Section 1.2) Should InstallShield Wizard find a previous version of BTW on the personal computer, it will attempt to uninstall it. On the *Remove the Program* screen (Figure 4), click the **Remove** button. The *Uninstalling Widcomm Bluetooth Software* screen (Figure 5) displays the uninstall process progress. When complete, the system will reboot. Start the install process again, beginning at step 1.
 - c) When the *License Agreement* screen is displayed, read the License Agreement, then click the radio button (Figure 6) to the left of “I accept the terms in the license agreement” and click the **Next** button.
 - d) On the *Customer Information* screen (Figure 7), enter the required information:
 - A User Name, for example, *John Smith*.
 - An Organization name, for example, *ABC Software*.
 - The License Key provided by WIDCOMM (see Section 1.4—License Keys, for additional information). The format is:
XXXXXXXX-XXXXXXXX-XXXXXXXX-XXXXXXXX.
 - Click the **Next** button.
 - e) On the *Device Information* screen (Figure 8), enter the required information:
 - Device Name—other Bluetooth-enabled devices, when inquiring about devices within radio range, will see this user-configured device name. The name can be changed after the installation process through the BTW Configuration Panel.
 - Device Type—click the down arrow ▼ and choose **Desktop** or **Laptop** from the drop-down list. The device type can be changed after the installation process through the BTW Configuration Panel.
 - Click the **Next** button.
 - f) On the *Destination Folder* screen (Figure 9), click the **Change** button to browse to a new destination folder for the BTW software (Figure 10). Otherwise, click the **Next** button to accept the default folder.
 - g) The InstallShield Wizard is ready to install the BTW software. If you need to review or change any settings, click the **Back** button. Click the **Cancel** button to exit the Wizard. Otherwise, click the **Install** button (Figure 11). The *Installing Widcomm Bluetooth Software* screen (Figure 12) displays the installation progress. If prompted to insert the Windows CD, do so and follow the on-screen instructions.
 - h) When the installation has complete, click the **Finish** button (Figure 13) on the *InstallShield Wizard Completed* screen.

1.4 LICENSE KEYS

If you have a licensed version of BTW, WIDCOMM will provide a License Key in the format of:

XXXXXXXX-XXXXXXXX-XXXXXXXX-XXXXXXXX

The License Key must be entered on the *Customer Information* screen (Figure 7, page 6) of the InstallShield Wizard.

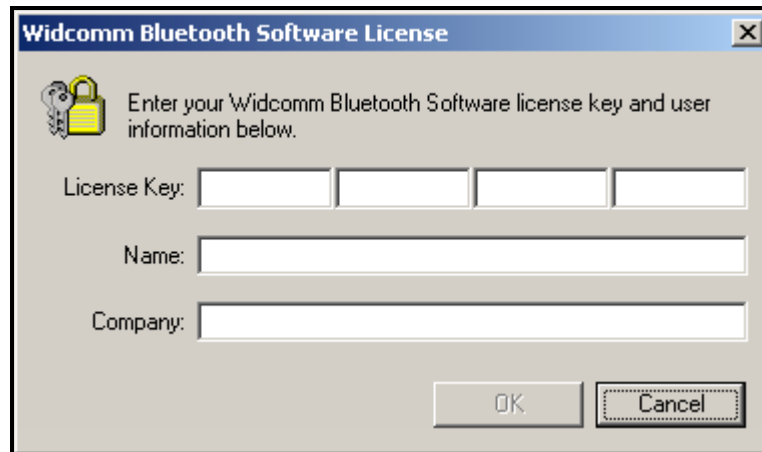
For some installations, you may not be prompted for the license key as it will have been provided through a `license.dat` file that is automatically checked by the InstallShield Wizard.

1.4.1 Expired License or Unlicensed Version of BTW

If your BTW license expires or you have installed an unlicensed version of BTW, the dialog box shown in Figure 1 will be displayed when BTW is started.

To renew your license or obtain a license key, contact WIDCOMM's Technical Support by e-mail at: support@widcomm.com.

Figure 1: Widcomm Bluetooth Software License dialog box.



The dialog box is titled "Widcomm Bluetooth Software License". It features a yellow padlock icon on the left. The text inside reads: "Enter your Widcomm Bluetooth Software license key and user information below." Below this text are three input fields: "License Key:" (a four-part field with individual boxes), "Name:", and "Company:". At the bottom right are "OK" and "Cancel" buttons.

Appendix A—InstallShield Wizard Screen Shots

Appendix A contains screen shots of the InstallShield Wizard as it is displayed during the installation of Bluetooth for Windows. The illustrations have been reduced in size.

Figure 2: Start-up dialog box.

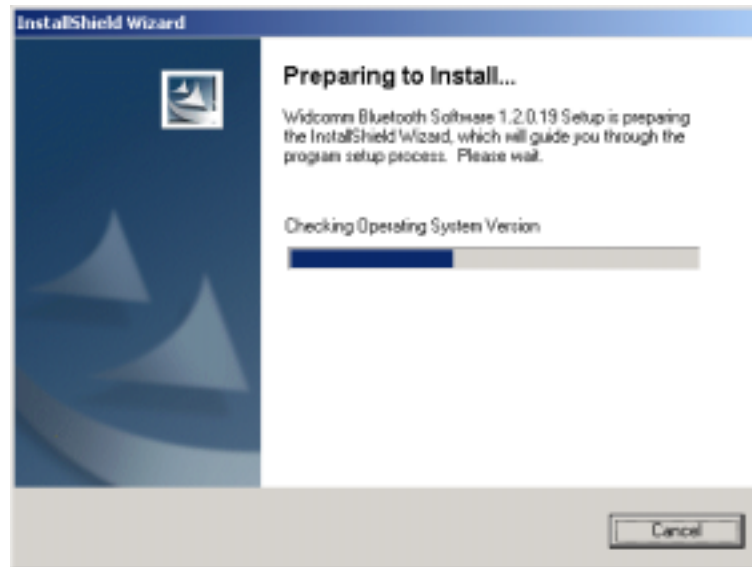


Figure 3: Welcome screen.

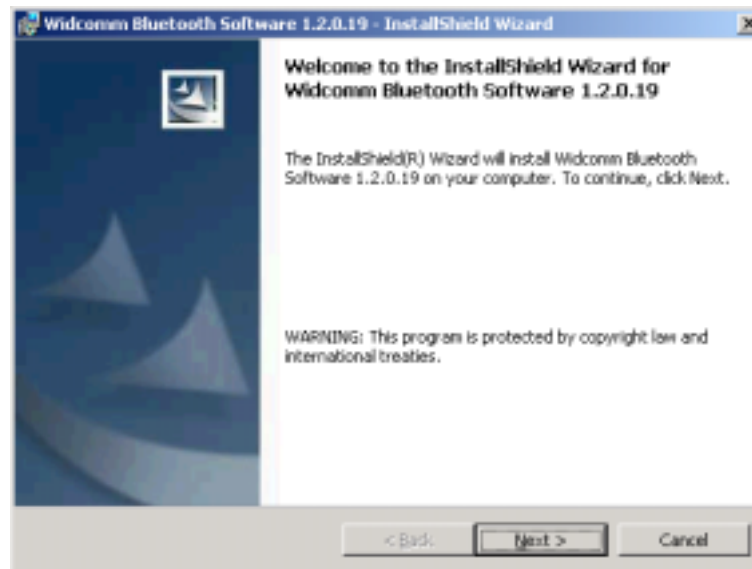


Figure 4: Remove the Program screen.

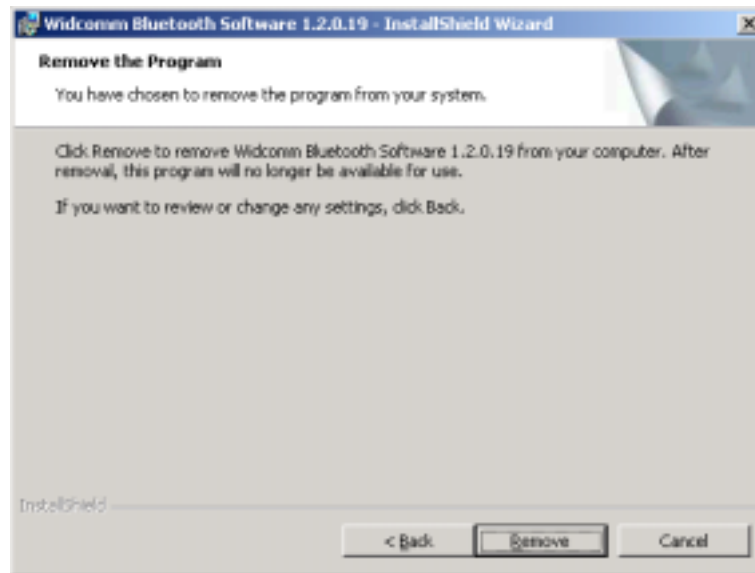


Figure 5: Uninstalling the previous version of BTW screen.

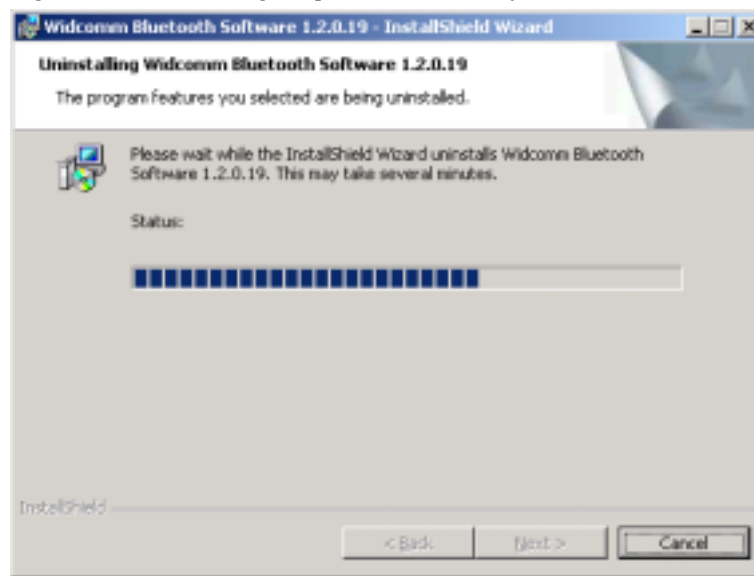


Figure 6: License Agreement screen.

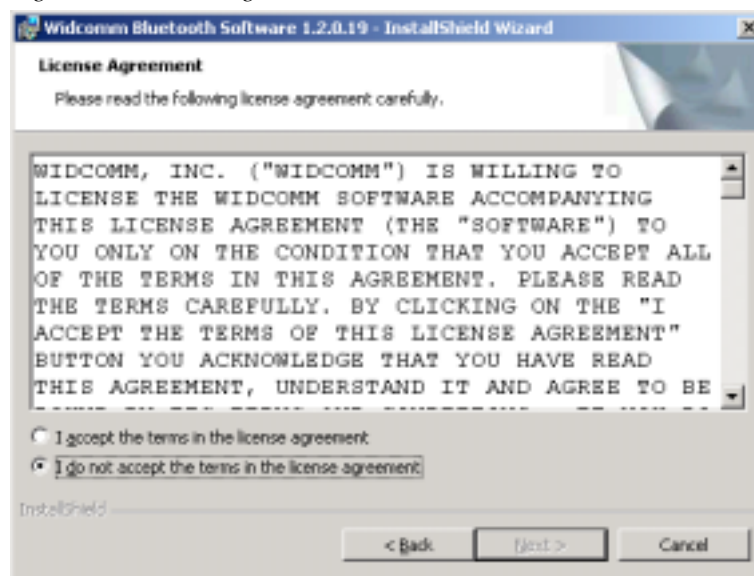
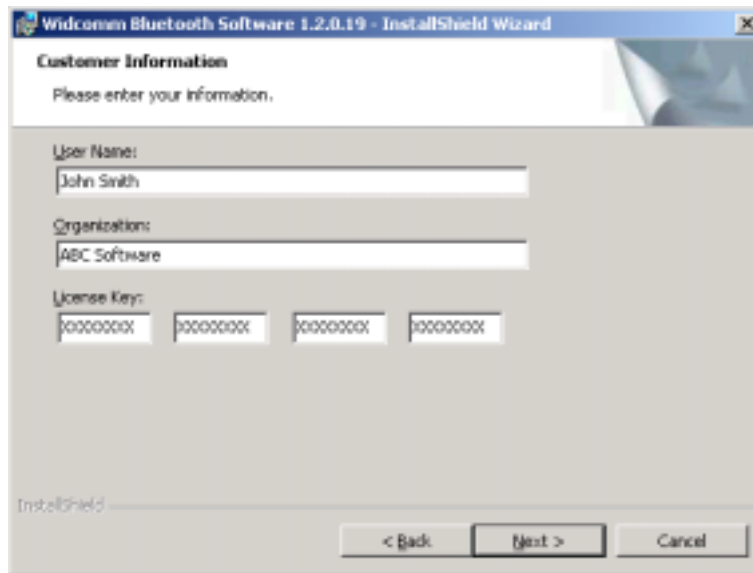


Figure 7: Customer Information screen.



Widcomm Bluetooth Software 1.2.0.19 - InstallShield Wizard

Customer Information

Please enter your information.

User Name:

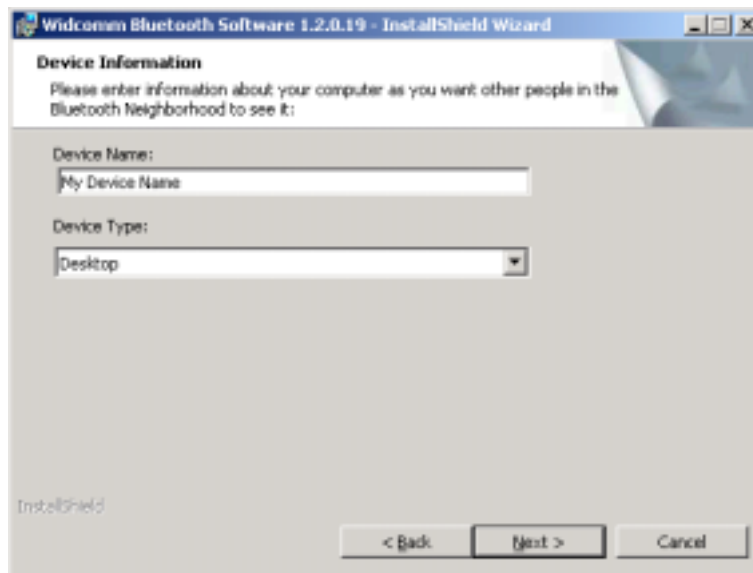
Organization:

License Key:

InstallShield

< Back Next > Cancel

Figure 8: Device Information screen.



Widcomm Bluetooth Software 1.2.0.19 - InstallShield Wizard

Device Information

Please enter information about your computer as you want other people in the Bluetooth Neighborhood to see it:

Device Name:

Device Type:

InstallShield

< Back Next > Cancel

Figure 9: Destination Folder screen.

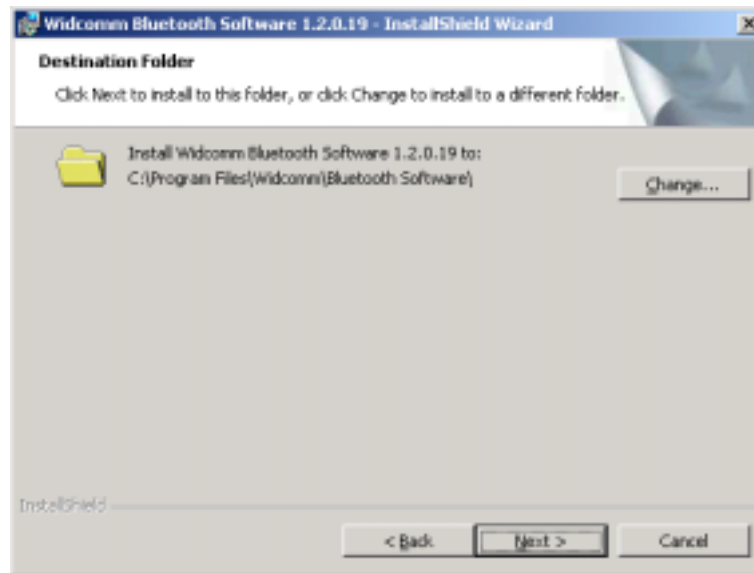


Figure 10: Change Current Destination Folder screen.

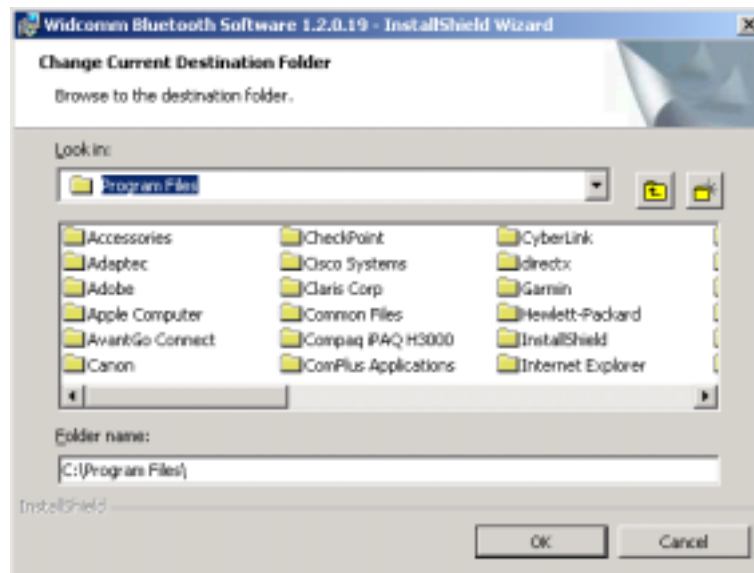


Figure 11: Ready to Install the Program screen.

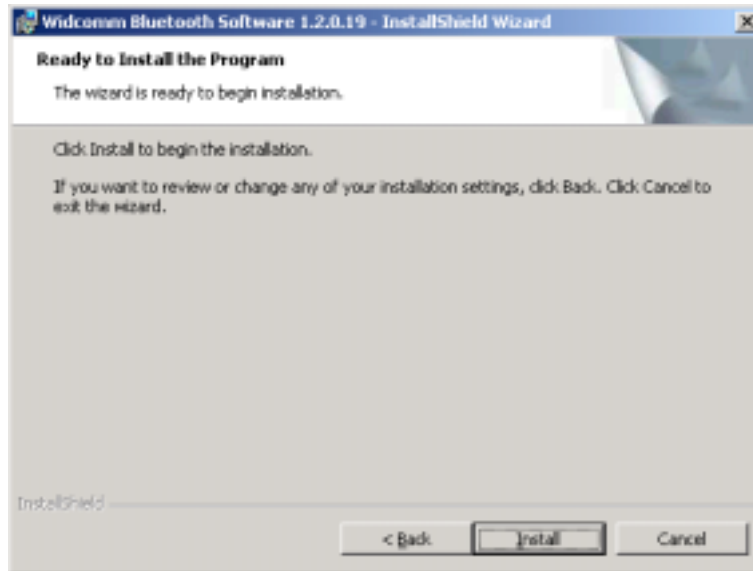


Figure 12: Installing Widcomm Bluetooth Software screen.

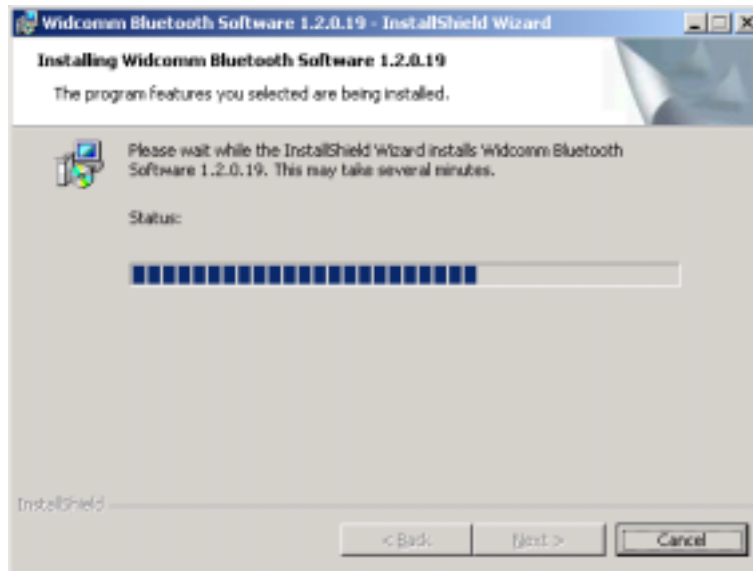
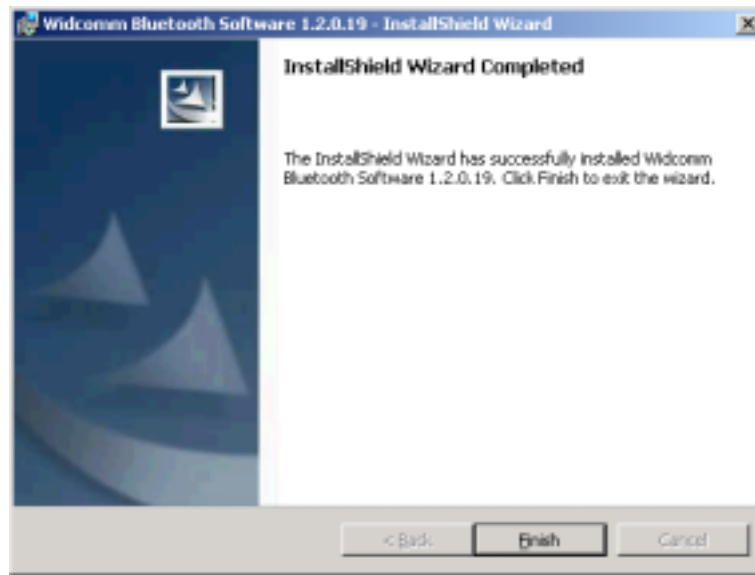


Figure 13: InstallShield Wizard Completed screen.



Appendix B—Release Notes

2 BTW 1.2.1.9 Release Notes

2.1 BLUETOOTH NEIGHBORHOOD

- Remove undesired reference to IBM in About Box

3 BTW 1.2.1.10 Release Notes

3.1 BLUETOOTH NEIGHBORHOOD

- My Bluetooth Places and service names are now correctly localized.
- The UI will display a message box if no devices were found in an inquiry or if no local device was present.

3.2 DRIVER

- Problem talking to BrainBoxes PCMCIA card with security is fixed
- Multiple adapters from different or the same hardware vendors may now coexist on a PC. The UART parameters are now stored by the INF files in and picked up by the code from the instance's hardware key.

3.3 INSTALL

- Oem files on XP are now uninstalled.

3.4 STACK SERVER

- Stack Server will not crash when SYNC service is stopped if connect remains after unsuccessful synchronization (e.g.waiting for a timeout).
- The SYNC Command feature is now supported by the SYNC Service.

4 BTW 1.2.1.11 Release Notes

4.1 BLUETOOTH NEIGHBORHOOD

- FTP Profile Usage Stability issues have been fixed.
- UI now properly convert Japanese characters encoded as Quoted-Printable characters in vCards, vCal, vNote and vMSG objects.
- Fixed problem handling empty date property in vMessage.
- Modified SDP record for OPP so that datatypes represent what the user wants to accept and what the PIM will support (if save-in-PIM is checked).
- When the data types a client wishes to synchronize does not match the data types the server supports the message "The server does not support the requested data" is displayed.

5 BTW 1.2.1.13 Release Notes

5.1 DRIVER

- Several minor fixed incorporated to satisfy XP Driver Verifier.
- Added ability to handle WinFax incorrectly purging outstanding writes when closing a port upon cancellation of a fax by the user.

6 BTW 1.2.1.14 Release Notes

6.1 DRIVER

- Fixed deadlock issue between BTPORT and BTKRNL for XP Driver Verifier.
- Added PID/VID information for Silicon Wave dongle support.
- Added Broadcom firmware version 2.8.2 support to fw203x.sys.
- Japanese context sensitive help is now working.

7 BTW 1.2.1.15 Release Notes

7.1 DRIVER

- Btfaxmdm.inf file has been modified to correctly propagate BUSY signal.
- Modems now get correctly installed to Bluetooth COM ports on XP.

8 BTW 1.2.16 Release Notes

8.1 BLUETOOTH NEIGHBORHOOD

- If FTP authorization and/or authentication fails, the error message displayed will now be "Connection could not be established" instead of "Could not handle request in present state".
- The pairing check mark will be properly refreshed in the folder view as well as list view in explorer window, when devices are paired or unpaired.
- The context menu 'Setup' for My Bluetooth Places is now localized.
- For Windows XP, HTML text on left panel of web view will use the platform language.

8.2 STACK SERVER

- OPP will now send End-Of-Body header on last block.
- Fixed OBEX to properly handle Abort Response received out of sequence.
- "No such file" error message no longer displayed when refreshing folder listing in Bluetooth Neighborhood if root folder is set to a drive (C:\, D:\, etc).

8.3 DRIVER

- Added support for MACO Serial UART dongle in W2K.

9 BTW 1.2.1.21 Release Notes

9.1 BLUETOOTH NEIGHBORHOOD

- Disconnect button in the service property page will only be displayed if applicable.
- Fixed problem in renaming of local services.
- Configure button is now not grayed out on the property pages for DUN and LAP connections. Create DUN or LAP connectoid in the situation when user requests to show properties when before connecting for the first time. Fixed the problem in displaying list of the RAS entries on the non XP platforms.

9.2 DRIVERS

- Fixed inf files according to chkinf utility

9.3 INSTALLATION

- Modified installation to install modems on Magellan platform

10 BTW 1.2.2.1 Release Notes

10.1 STACK SERVER

- Modified DHCP processing to use BD_ADDR of the peer device when requesting an IP address in the LAN Access Server driver.
- Fixed FTP problem in transferring folder in the root directory.

10.2 DRIVER

- Fixed resource files for the driver to display correct company name.
- Fixed processing of REMOVE_DEVICE Irp in the port driver.

10.3 INSTALLATION

- Added a dialog for Compaq installer to allow unsigned driver to be installed without generating numerous warning messages.

11 BTW 1.2.2.4 Release Notes

11.1 INSTALLATION

- Fixed an installation problem that was causing error pop up 'Error applying transforms'.
- Added the driver signature notice dialog to all retail release installations and modified the dialog text to make it generic.

11.2 USER INTERFACE

- Fixed text display problem during installation and on UI on Swedish language setting. Incorrect resource language DLL was being used.
- Fixed context sensitive help on French language setting.
- Fixed missing characters problem in BTW Control Panel on Portuguese (Brazil) and Danish language setting.

11.3 STACK SERVER

- Fixed communication problem between Ericsson phone and BT Multiport. Inactivity timeout parameter that was put to comply CHKInf does not work for Ericsson phone. Removed the parameter.
- Fixed regional power setting problem on Windows 98.

12 Known issues

- In order to use the "Save in PIM" option the default mail client must set to either "Microsoft Outlook" or "Lotus Notes". This is done from the control panel by double clicking the "Internet Options" icon. Select the "Programs" tab and modify the E-mail option. Typically this is done automatically after you first run the particular PIM application. However, there are some situations when setting this option becomes necessary. The BTW software must be restarted for this change to take effect.
- When a remote device connects Bluetooth Serial Port to a COM that is already being used by another application, the remote device icons displays connected even though the Bluetooth stack server cannot open the COM port for reading/writing data.