

## Wireless 2-port USB/ MFP Server

**LevelOne's** WUS-3200 is a wireless 2-port USB/ MFP server well designed to provide easy network accessibility for office environment or SOHO network usage. This device converts user printers, HP MFPs, or USB storage devices with USB interfaces to share resources via Ethernet LAN or 802.11b/g wireless network, easily letting you scan, print, and import/export data storage.

The WUS-3200 has 2 USB2.0 host ports to connect two USB devices. You can connect two general printers or HP MFPs to share printer resources, HP USB Scanner or HP MFP to share scanner functions, and also USB hard disk or flash drives to share stored files. With the Web-based management interface, system configuration and maintenance is not a problem for WUS-3200. By using a general browser, the menu will walk you through the whole configuration procedure. The built-in FTP server allows you to access files over the Internet with user level security, making it easier to store and receive data. You can push the "INIT button" to print a configuration report to check the connection, perform a factory default of your MFP server, and upgrade the newest firmware.

In order to simplify your USB devices management, WUS-3200 is the device to maximize your productivity and investment by sharing information through reliable networking.



**WUS-3200**

### Related Products



**FPS-3003**  
2-port USB/ MFP Server

## Key Features

- Shares 2 USB 2.0 devices to LAN or 802.11b/g wireless networking
- Shares printer function for general USB printer and HP MFP
- Shares scanner function of HP MFP
- Supports general USB storages including USB hard disk, flash drive and card reader
- Supports SMB and FTP file server
- WEP encryption and WPA-PSK
- Operation Mode: Infrastructure/ Ad-Hoc modes
- Supports easy setup through Web Browser
- Provides Windows tool on Windows 98SE/ME/2000/2003/ XP

## Compatible List

### Scanner of MFPs

|                         |  |
|-------------------------|--|
| HP OfficeJet            | G55, G85, G95, D125, D135, D145, D155, K60, K80, V40, 4100 series, 4105 series, 4110 series, 4115 series, 4105 series, 4200 series, 5105 series, 5110 series, 5500 series, 6100 series, 6150 series, 6210 series, 7100 series, 7110, 7130, 7140, 7200 series, 7300 series, 7400 series, 9100 series. |
| HP PSC                  | 720 series, 750 series, 760 series, 950, 1100, 1200, 1205, 1210, 1310, 1350, 1610, 2110, 2150, 2170, 2175, 2210, 2350, 2400 series, 2500 series, 2600 series, 2700 series  |
| HP LaserJet All-in-Ones | 1220, 3200, 3200se, 3200m, 3300, 3310, 3320, 3330, 3015, 3020, 3030, 3380  |

### General USB Printer

Brother, Cannon, Epson, HP, IBM, Kyocera, Lexmark, Minolta, NEC, Océ, OKI, Ricoh, Sharp, TEC, Star, Toshiba, Zebra, Xerox

### USB Storage/ Memory cards

Supports most USB hard disk, USB flash drive and USB card reader

\* Certain models listed are subject to change without notice. Please confirm the latest material when placing orders.

## Technical Specification

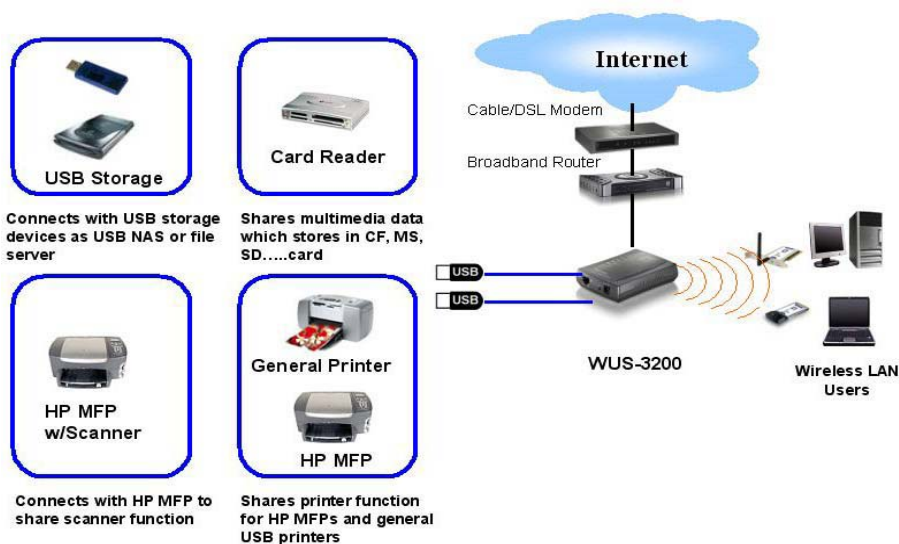
### USB/MFP Server Features

- **Print Server Supported Systems**  
Microsoft Windows 98SE/ ME/ 2000/ XP and 2003,
- **File Server Supported Systems**  
Microsoft Windows 98SE/ ME/ 2000/ XP and 2003,  
Supported CodePage: Western Europe/ Central Europe/  
Greek/ Cyrillic/ Japanese/ Korean/ Traditional/ Chinese/  
Simplified Chinese/ Thai/ Arabic
- **Scan Server Supported Systems**  
Microsoft Windows 98SE/ ME/ 2000/ XP and 2003
- **Printer Server Protocols**  
TCP/IP: LPR, Raw TCP, SMB/CIFS, IPP
- **File Server Protocols**  
SMB: CIFS  
FTP
- **Scan Server Protocols**  
SANE Server
- **Management**  
Supported Protocols: DHCP, FTP, HTTP, SNMPv1/v2c/v3  
Web pages for configuration, monitoring and firmware  
upgrading  
Windows utility for installation, configuration and  
monitoring
- **Firmware Upgrade**  
Internal Web pages/ TFTP  
Windows Tool (Control Center)

### Hardware Specification

- **Processor**  
ARM 9-based RISC microprocessor, operating at 166MHz
- **Memory**  
Flash Memory: 2 Mbytes  
RAM: 8 Mbytes
- **Ports**  
1 x 10/100 Mbps RJ-45 LAN port  
2 x USB 2.0 Full-speed host ports
- **LEDs**  
Power, LAN, WLAN, USB1 and USB2
- **Power Supply**  
5V/2A, external power
- **Power Consumption**  
10 W
- **Temperature**  
Operating: 5°C~40°C
- **Humidity**  
Operating: 0% ~ 70% (Non-condensing)
- **Dimension**  
104mm(D) \* 76mm(W) \* 26mm(H)
- **Weight**  
85 g
- **EMI and Safety**  
FCC part 15 Subpart C, Class B, VCCI Class B

## Product Diagram



## Ordering Information

- WUS-3200: Wireless 2-port USB/MFP Server