

## 54Mbps Wireless Access Point w/ PoE Function

### PoE Enabled 54Mbps 802.11g Wireless Access Point

LevelOne announces the latest addition to the current 54Mbps Wireless Access Point product family – the WAP-0009. This 802.11g high-speed Wireless Access Point features Power over Ethernet capability for easy deployment into a current network.

### Ideal Wireless Solution

The WAP-0009 is an 802.11g and backward 802.11b compliant Wireless Access Point that acts as bridge between the wired Ethernet and Wireless LAN providing wireless network access to wireless enabled devices such as notebook computers and PDAs. Wireless network devices enjoy high-speed network access, quick file transfers and real-time Internet browsing at 54Mbps.

### Robust Wireless LAN Security

Wireless security is always a concern among both network administrators and network users. The WAP-0009 adequately addresses this concern by providing industry standard ESSID and 64/128-bit key length WEP encryption. It further provides WPA-PSK and WPA2 (AES) advanced security measures. MAC access filtering and ESSID broadcast disable functions further compliments the security features of the WAP-0009.

### Power over Ethernet Enabled

Power over the Ethernet has become an increasingly welcoming feature of network devices for easy deployment within networks. PoE enables network devices to receive power over Ethernet cabling instead of a traditional power supply point. The WAP-0009 is fully compliant with the IEEE 802.3af PoE standard that eliminates the constraint of costly power cables while maximizing deployment flexibility.

The built-in 10/100Mbps auto-sensing LAN port can simultaneously deliver power and data over a single Ethernet cable to power sourcing equipment such as a PoE switch or a PoE mid-span hub.

### Multiple Operation Modes

The WAP-0009 supports a several important wireless operation modes.

By using the Access Point Client mode the WAP-0009 provides fast network access to wireless clients that need to connect to Ethernet devices, such as storage devices, within the network.

In Repeater mode the wireless network and range is extended between two network locations. The wireless signal received is repeated and transmitted to another network entry point.

The Bridge mode operation is also useful when users want to bridge networks between buildings where it is impossible to deploy long and costly network cable connections.

### Flexible Upgrading and Management

The LevelOne WAP-0009 provides a standard RP-SMA antenna connector that allows users to connect all types of high gain antennas for extending the wireless LAN coverage.

It further has a friendly Web-based user interface for quick and easy management. Deployed within a network that is controlled by the AMG-2000 Network Access Management Gateway\* further enhances the usability of the WAP-0009.

*\*For further information about the AMG-2000 Network Access Management Gateway, please visit the LevelOne website or contact your local distributor.*



**WAP-0009**

### Related Products



**WNC-0301**  
54Mbps Wireless PCI Card



**WPC-0301**  
54Mbps Wireless PCMCIA Adapter



**WNC-0301USB**  
54Mbps Wireless USB Adapter



**AMG-2000**  
Wireless Management Gateway

## Key Features

- 802.11g high-speed network access at 54Mbps; backward compliant with 802.11b
- 802.3af POE compliant for flexible and cost-effective deployment
- Supports Access Point, AP Client, Repeater and Bridge operation modes
- Provides MAC address filtering
- Supports WEP 64/128-bit encryption, WPA-PSK, WPA2 (AES encryption)
- Provides DHCP Server
- User-friendly Web-based management interface
- Firmware upgrade via web

## Technical Specification

### Specifications

- **Standard Conformance**  
IEEE802.11b/g,
- **LAN Port**  
1 x 10/100 Mbps Auto-MDIX RJ-45 Ethernet port with POE (PD) function

### Security

WEP 64/128-bit Web share key encryption,  
WPA-PSK security  
WPA2 (AES Encryption)  
MAC Address Access Control List

### Management

Web Based Management  
Firmware upgrade via web

### Physical Specifications

- **Temperature**  
Operation: 0~55°C  
Storage: -20~70°C
- **Humidity**  
10%~90%(non-condensing)
- **Dimensions**  
127mm(W) \* 96mm(D) \* 30mm(H)
- **Certification**  
FCC, CE
- **Power Adapter**  
12VDC,0.5A Liner Power Adapter

### Radio Operation

- **Frequency Band**  
2.400~2.4835GHz
- **Data Transfer Rate**  
802.11g up to 54 Mbps (6/9/12/18/24/36/48/54 Mbps)  
802.11b up to 11Mbps (1/2/5.5/11 Mbps)
- **Modulation**  
CCK@11/5.5Mbps, DQPSK@2Mbps, DBPSK@1Mbps
- **Radio Technology**  
Direct Sequence Spread Spectrum (DSSS)
- **Number of Channels (Fixed)**  
Channel 1-11 (North America)  
Channel 1-14 (Japan)  
Channel 1-13 (Europe)
- **Antenna**  
1 x RP-SMA detachable Antenna (Default)
- **Transmitter Output Power:**  
802.11b: 18dBm, 802.11g: 15dBm
- **Operation mode**  
AP /Station / Repeater / Bridge Modes

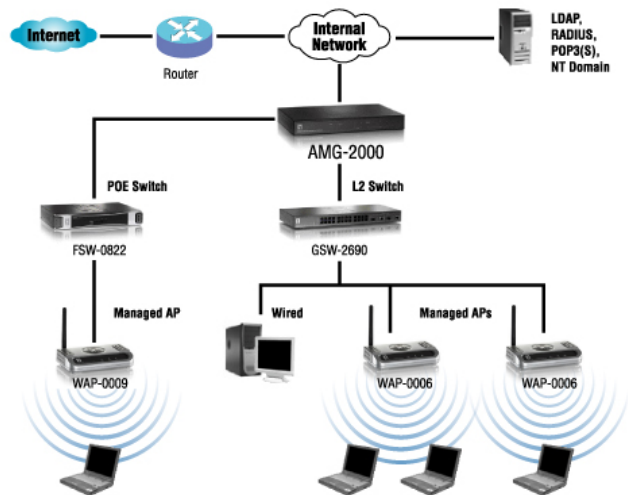
## Product Diagram



WAP-0009 in AP Mode



WAP-0009 in Station / Client Mode



With AMG-2000 Network Access Management Gateway acting as controlling unit for the WAP-0009's management features

## Ordering Information

- **WAP-0009:** 54Mbps Wireless Access Point w/ POE Function