



5GHz 15dBi Directional Dual-Polarization Outdoor Panel Antenna

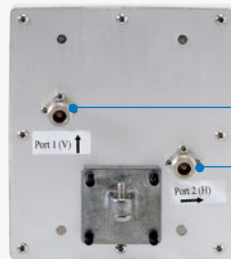


WAN-9150

H/W Version: 1

The LevelOne WAN-9150 15dBi Directional Dual-Polarization antenna is designed for outdoor wireless connections. With array pattern located at +45° and -45° polarization, you can improve signal strength in a crowded area with possible signal interference. It improves signal strength and coverage in 5GHz band,

towards a concentrated enhanced direction. This panel antenna is easy to mount and install on flat areas such as wall or window. Designed for outdoor elevated installation with high sustainability in strong wind. With IP-67 rating, it is completely protected against dust and humidity ingress.



1

1. N jack

1

Key Features

- Operates in 5GHz band, according to IEEE 802.11a/n specifications
- Antenna diversity at 15dBi high gain performance
- Dual-Polarization to avoid interference
- Easy to install on the wall surface
- Wideband frequency performance enables future growth and increases flexibility

Related Product



WAN-4232
23dBi Directional Outdoor Panel Antenna(5GHz)



OAN-4101
10dBi Omni-directional Antenna (5GHz)

Technical Specification

Electrical Specification

Frequency range

5.15~5.875GHz

Gain

15dBi

VSWR

≤2.0

Polarization

Linear, 0° & 90°

Horizontal HPBW

30±5°

Vertical HPBW

20°±5°

Sidelobes level

-8dB (normalize level)

Isolation

-15dB

Input impedance

50 Ohm ±5 Ohm

Connector

N Female x 2

Power handling

10Watt

Lightening protection

PCB 94V-0

Environmental & Mechanical Characteristics

Survival wind speed

216km/hr

Temperature

-40°C~ +80°C

Humidity

95% @ °C55

Radome color

White

Radome Material

ABS

Weight

215g ± 20g

Dimensions (L x W x H)

162.5 x 137.5 x 16mm

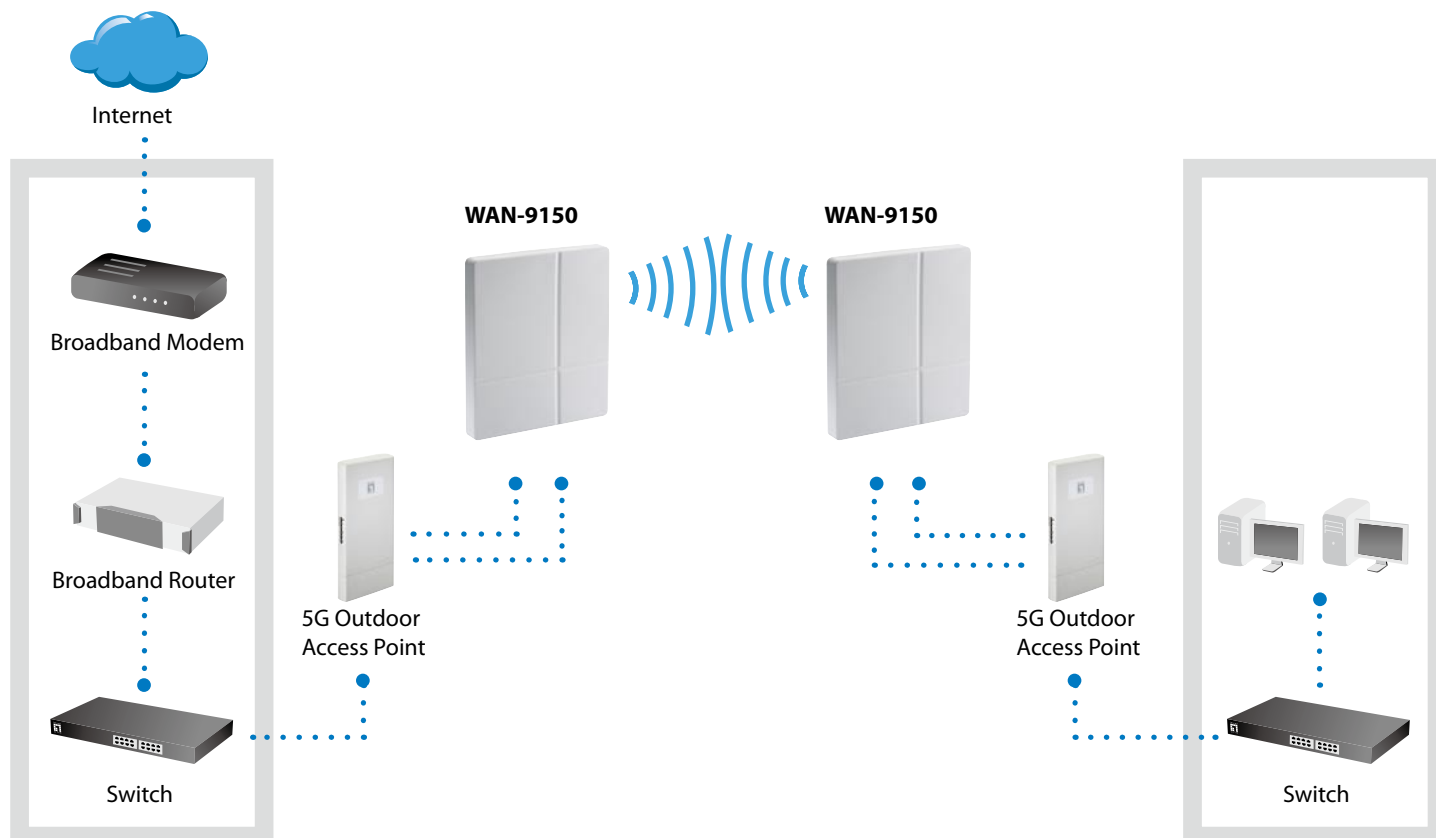
Waterproof Protection Rating

IP-67

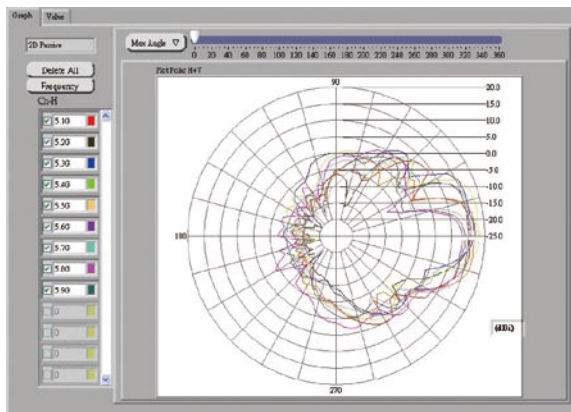
Mount kit

Wall mount & Window Mount

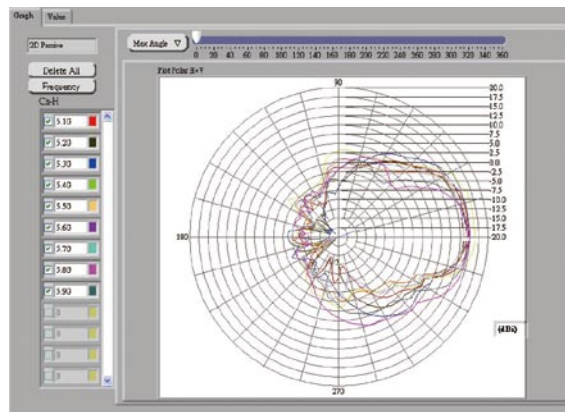
Product Diagram



Radiation Pattern



Radiation pattern (Port 1)



Radiation pattern (Port 2)

Order Information

WAN-9150: 5GHz 15dBi Directional Dual-Polarization Outdoor Panel Antenna

Package Contents

WAN-9150 x 1 Set

QIG x 1 Set

Standard mounting kit (Pole mount x 1 & Wall mount x 1)

Optional Accessories



ANC-2310

RPSMA plug to N plug-1m



ANC-2330

RPSMA plug to N plug-3m



ANC-4130

N Plug to N Jack Antenna
Cable-3m



ANC-4160

N Plug to N Jack Antenna
Cable-6m



ANA-6100

6G Outdoor Lighting Arrestor

All mentioned brand names are registered trademarks and property of their owners. Technical specifications are subject to change without notice.

© Copyright Digital Data Communications GmbH. All Rights Reserved.