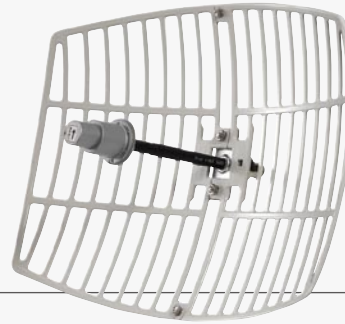




# 11a 22dBi Directional Grid Antenna



WAN-4220

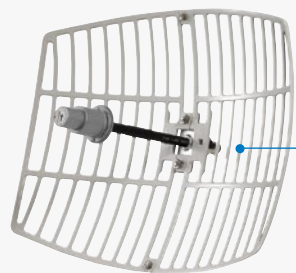
## H/W Version: 1

LevelOne's WAN-4220 outdoor grid antenna provides a very high 22dBi gain with 13° horizontal beam-widths for long-range directional applications. This antenna increases wireless signal coverage and improves signal strength/quality for existing 802.11a wireless devices in the range between 5.725GHz to 5.850GHz frequency bands.

This antenna is especially designed for outdoor point-to-point wireless bridge applications such as LevelOne's WAB-7000. It features a cast aluminum

reflector grid for superior strength and light weight. The waterproof surface keeps the antenna workable in any rogue environment.

This antenna comes with antenna and metal bracket. The antenna can be easily installed for either vertical or horizontal polarization. WAN-4220 can also work with other wireless devices, which comply with IEEE802.11a standard and are equipped with an N male connector.



N-jack female Connector

## Key Features

- For IEEE 802.11a applications at the range between 5.725- 5.850GHz frequency band
- Easy to install for vertical or horizontal Polarization
- Directional operation provides extended point to point coverage
- Low wind resistance

## Works Well With



### WAB-7000

11a/b/g Outdoor PoE Wireless Access Point



### WAB-7400

11a/b/g Dual Radio Outdoor Mesh PoE Wireless Access Point

## Technical Specification

### Electrical Specification

**Frequency Band**

5.725 GHz~5.858GHz

**Gain**

22 dBi

**VSWR**

1.5:1Max

**Polarization**

Horizontal or Vertical

**HPBW/ Horizontal**

13°

**HPBW/ Vertical**

10°

**Front to back ratio**

25 dB

**Power Handling**

100W

**Impedance**

50 Ohms

**Connector**

N female

### Environmental & Mechanical Characteristics

**Temperature**

- 40oC to +85oC

**Humidity**

95% @ 25oC

**Elevation Angle**

0 to 15°

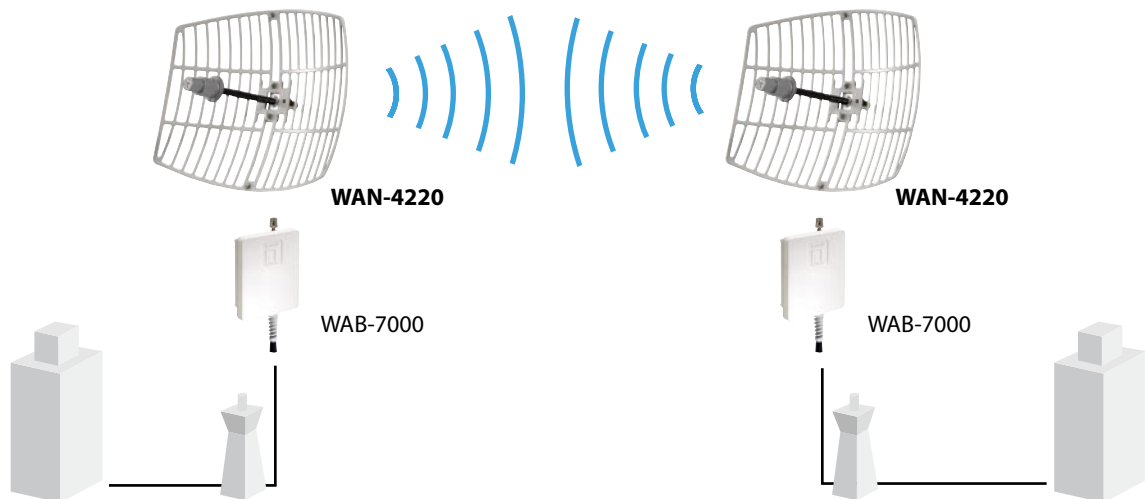
**Weight**

1.4kg

**Dimension**

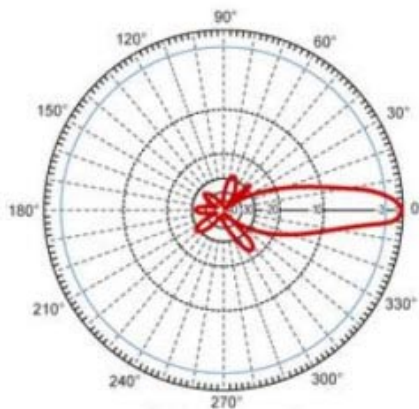
300mm x 400mm

## Product Diagram

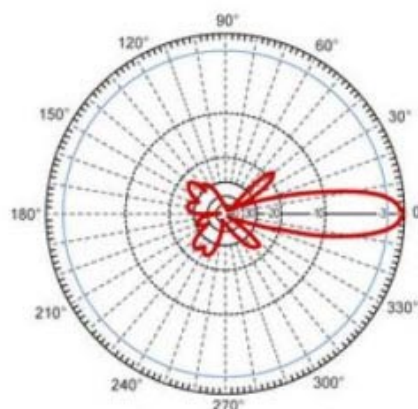


WAN-4220 works with WAB-7000 for Point-to-Point wireless bridging applications

## Radiation Pattern



V-Plane Co-polarization Pattern



H-Plane Co-polarization Pattern

## Order Information

**WAN-4220:** 11a 22dBi Directional Outdoor Grid Antenna

## Package Contents

WAN-4220, Wall & Pole Mounting

## Optional Accessories



**ANC-4230**  
400 Series N plug to N  
plug Cable 3m



**ANC-2210**  
200 Series N plug to N  
plug Cable 1m



**ANC-2310**  
200 Series N plug to  
RPSMA plug Cable 1m



**ANA-6100**  
6GHz Outdoor  
Arrestor



**ANC-2330**  
200 Series N plug to  
RPSMA plug Cable 3m