

85Mbps HomePlug Ethernet Bridge

Cost-effective Network Solution-- LevelOne Homeplug networking solution, PLI-2021 HomePlug Ethernet Bridge, provides you the simple internet connection by plugging to the existing powerline infrastructure thus leveraging the performance of the Ethernet. With our advanced HomePlug technology, there is no need to spend time and money implementing expensive Ethernet cabling to share your high speed cable or DSL modem. We thus provide a cost-effective solution for network installations.

Adopt the Latest Technolog-- The PLI-2021 complies with HomePlug 1.0 Turbo standard which provides the capability to transmit data at a maximum speed of 85Mbps over existing electrical infrastructure. The built-in Quality of Service (QoS) features provide the necessary bandwidth for multimedia payloads including voice, data, audio, and video applications. Regarding security, the 56-bit Data Encryption Standard (DES) technology enabled by default guarantees the security and privacy of transmission.

Easy to Install and Maintain-- The PLI-2021 is easy to setup and install with minimum configuration using the embedded configuration utility. This feature enables the user to find Homeplug devices on the powerline network, measure data rate performance and ensure privacy by setting a user defined network private password. With its compact-sized design, PLI-2021 is easy to allocate without limiting your mobility and saving your desktop space.

The PLI-2021 is the ideal solution specifically targeted at SOHO users or small and medium enterprises that need high-speed networking without cluttered messy wiring.



PLI-2021

Related Products



PLI-1010

HomePlug USB Adapter



PLI-2010

HomePlug Ethernet Bridge

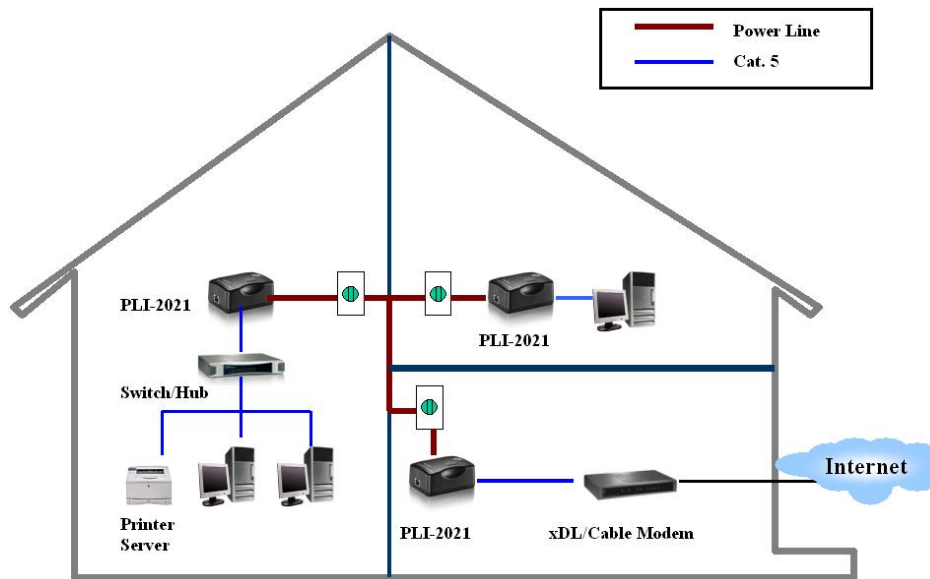
Key Features

- HomePlug 1.0 and 1.0 turbo Compliant
- Delivers data of up to 85 Mbps data rates
- Integrated QOS features
- OFDM for high data reliability in noisy media conditions
- Privacy through 56-bit DES Link Encryption
- Simple Plug-and-Play Installation
- Cost-effective network solution
- Deliver the benefits of Ethernet without wiring expense

Technical Specification

- **Standard**
HomePlug Powerline Alliance Specification 1.0
IEEE 802.3 Ethernet
IEEE 802.3u Fast Ethernet
- **Port**
10/100Mbps Ethernet RJ-45
- **Modulation**
OFDM 256/64/16, DQPSK, DBPSK and ROBO Modulation Scheme
- **Frequency Band**
4.3 Mhz to 20.9 Mhz
- **Security**
56 bits DES encryption with key management
- **Data Rate**
Up to 85 Mbps
- **LEDs**
Power (Green)
HomePlug Link/Act (Green)
Ethernet Link/Act (Green)
- **OS Supported**
Windows™ 98SE/ME/2000/XP
- **Hardware**
Intellon INT5500 Integrated single-chip Powerline Network Transceiver
- **Power input**
100-240VAC, 50/60 Hz
[Supply for UK plugs](#)
- **Temperature**
Operating: 0°C ~40°C (32°F ~ 104°F)
Storage: -25°C ~70°C (-13°F ~ 158°F)
- **Humidity**
Operating: 30% ~ 80% (non-condensing)
- **Dimension**
103.0mm(L) * 71.5mm(W) * 38.0mm(H)
- **EMI and Safety**
FCC, CE

Product Diagram



LevelOne 85Mbps Homeplug Solution

Ordering Information

- PLI-2021: 85Mbps HomePlug Ethernet Bridge