

# IVS Server 1



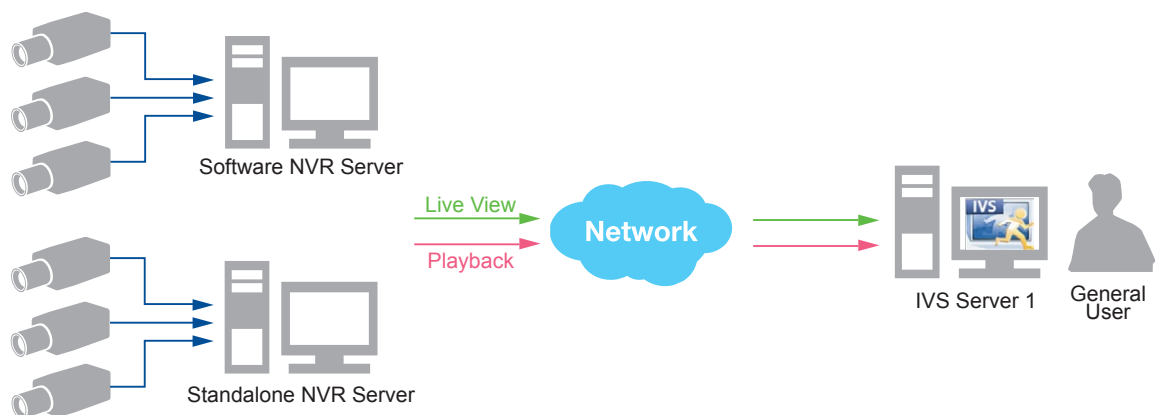
- Concurrent analysis of up to 9 channels
- Up to 4 simultaneous algorithms per channel
- Multiple algorithms including Line crossing, Enter Area, Missing Object, Unattended Object, Tamper, Object Counting and People Counting
- Event search and filtering based on time, algorithm and object color
- Playback captured events
- Export videos of captured events
- Analysis for live and pre-recorded videos

## INTRODUCTION

IVS Server 1 is a video analytics software designed to transform your video surveillance network into a smart detection system. This software uses advanced image processing algorithms to recognize humans and everyday objects. The algorithms are able to track the movements of objects, such as appearances, disappearances or loitering, and determine whether the movements are suspicious based on user-defined rules. Once a suspicious activity is detected, users can also playback to watch these events and use them as references or evidences if needed. In addition, this software also provides algorithms to count the number of objects or humans passing by a specific location. IVS Server 1 helps you enhance your existing surveillance system while providing you with valuable information for business intelligence and management.

## SOLUTION ARCHITECTURE

### IVS Server 1



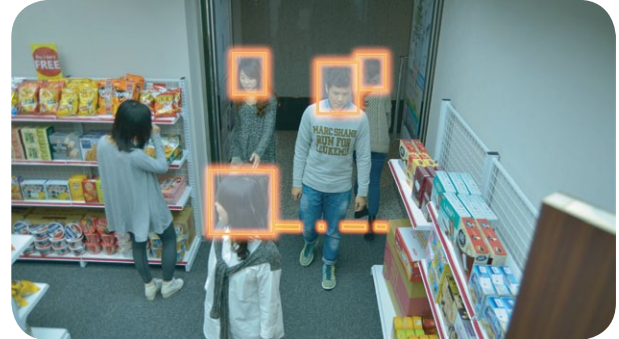
# IVS Server 1

## KEY FUNCTIONS

**"Enter Area"** detects and captures video of people that have entered and stayed in a marked area for longer than a certain amount of time.



**"People Counting"** provides bi-directional counting function for people entering and exiting an area, as determined by a virtual line.



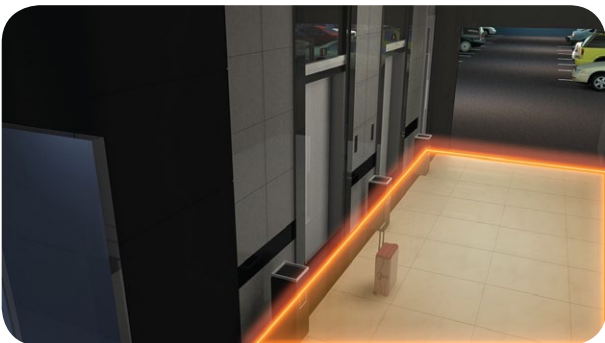
**"Missing Object"** detects and captures video for objects that have suddenly disappeared from a marked area.



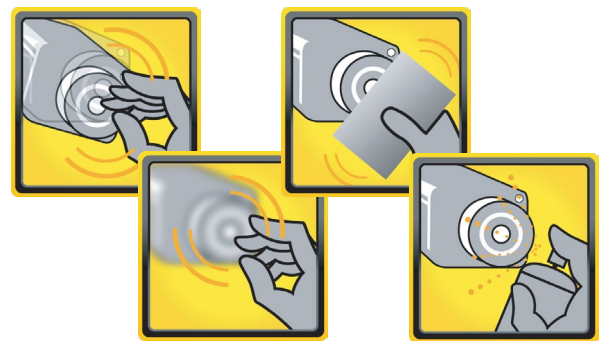
**"Line Crossing"** captures the movement of people or objects over a predetermined virtual line.



**"Unattended Object"** detects and captures video of objects that have suddenly appeared in a certain area.



**"Tamper"** detects and captures any attempt to damage or manipulate the device, such as redirecting the camera, loss of focus, covering, and spray-painting the camera.



## PRODUCT SPECIFICATION

### IVS Server 1

**• General**

Max. Number of Analytical Channels	9
Video Compression	H.264, MPEG-4, MJPEG
Camera Resolution	Up to 10 Megapixels

**• Video Analytic Algorithms**

Algorithm	Line Crossing; Enter Area; Missing Object; Unattended Object; Tamper; Object Counting; People Counting
-----------	--

**• System Requirements**

CPU	Minimum: Intel Core 2 Quad 2.4 GHz, 4GB RAM ; Recommended: Intel Core i5 2.4 GHz, 4GB RAM
Operating System	32/64 bit : Windows 7, Windows 8
Network	Ethernet 1000 Base-T recommended

**• Integration**

Unified Solution	Compatible with Onesecure and Standalone NVR-12/14xx series and NVR-5500 servers
------------------	--

\* All specifications are subject to change without notice.  
 \* All brand names and registered trademarks are the property of their respective owners.