

## IP Power Switch

### Remotely Manage Power to Network Devices

LevelOne is introducing the IPS-0008 IP Power Switch to give users the ability to remotely control the power to equipment attached to this switch with a Web browser like Internet Explorer. This ease of use makes this switch a preferred tool in managing network equipment that needs to be turned off because of fear of damage due to bad weather or systems that needs a reboot.

The IPS-0008 is an ideal remote management system for the home, office and larger enterprise organizations for rebooting servers and manage the power to other network devices.

**Intelligent Power Management**—LevelOne has designed the IPS-0008 with eight individual power outlet ports that can be configured individually. Each port has the ability to power-on, power-off or reboot a network device whenever the power cable of that device is plugged into an IPS-0008 outlet port. The IPS Switch is also able to measure the input and individual outlet current consumption to make decisions on whether or not the system connected is active or not. With this continued monitoring the IPS-0008 can reboot a hang device connected without user input.

**Easy Maintenance and Configuration** -- In addition to manual remote control, the IPS-0008 Power Switch provides event-triggered or schedule-based control to turn connected equipment wither on or off or to reboot systems. The IPS-0008 is easily configured with its Plug-and-Play ability. Devices connected are then specified by using the web browser ability of the switch. The Power Switch keeps a detailed log off all devices connected so that in case of severe errors reported from certain devices conencted to the switch can easily be solved.

### Security

The IPS-0008 Power Switch is protected against unauthorized access with both SSL and SSH encryption. Only administrator and users who have been granted access to the switch can control and view the switching state of any specified combination of sockets. This eliminates the fear of unauthorized access and potential damage to equipment connected to the switch.



IPS-0008

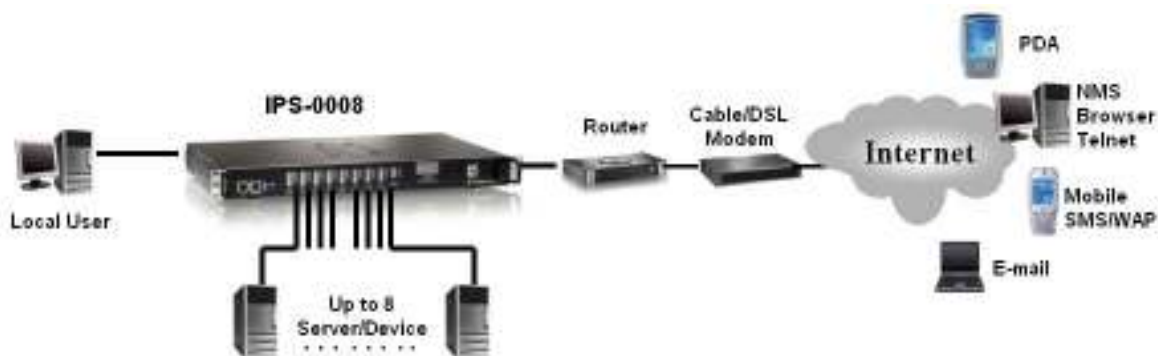
## Key Features

- Turns power On/Off any AC powered equipments via network, console and by manual
- Schedules to turn On/Off the connected equipments
- Comprehensive management and flexible configuration via web browser, Telnet, SNMP
- Firmware upgrade via MS Windows utility
- Provides detail data-logging for statistical analysis
- Sends Trap or Email for events notification
- Supports java applet of History log
- Supports SSL v3 and SSH v1 protocol
- Allows user to configure the sequence in which power is turned on or off for each outlet
- Two level username and password security
- Address-specific IP security masks prevent unauthorized source from accessing the IPS-0008
- Available in 110VAC, 220VAC models
- Supports two digital output to trigger extended devices
- Supports modem function for remote dial-up connection

## Technical Specification

Model	IPS-0008 (110V)	IPS-0008 (220V)
Input Connection	IEC C20 inlet, Rating- 15Amps Voltage: 100~125 VAC 50/60 Hz	IEC C20 inlet, Rating- 15Amps Voltage: 200~250 VAC 50/60 Hz
Output Connection	NEMA 5-15R Outlet, Rating- 15Amps Voltage: 100~125 VAC 50/60 Hz Load: 15Amps Each Outlet or Total	IEC C13 inlet, Rating- 10Amps Voltage: 200~250 VAC 50/60 Hz Load: 15Amps Each Outlet or Total
Remote Control Indicator	Each outlet's remote control status is displayed on the front panel through a LED Gray: Remote Control Enabled Red: Remote Control Disabled	
Outlet Power Indicator	Each outlet's power status is displayed on the front panel through a LED Gray: Power On Red: Power Off Blinking Green: Power Off	
Current Meter	6-Segment LED to display the current level of the inlet and each outlet, the color of LED is orange	
Voltage Segment x	7-Segment to display input voltage, current and frequency	
Serial Terminal	Digital Output x 2	
DB9 Contact Port	DB9 using dry contacts	
Format	1 U Rack	
19" Ears	Detachable	
Dimensions	436(W) mm x 270(D) mm x 44(H) mm	
Weight	3.8Kg	

## Product Diagram



## Ordering Information

- IPS-0008: IP Power Switch