

48-port 1000T + 4SFP Web Smart Switch

LevelOne's GSW-4875 is a high-density smart switch that provides the ultimate bandwidth and versatile features for large workgroups or backbones with the aggregated 96Gbps bandwidth. We offer outstanding connectivity by providing different 48-port 1000T combo with 4-port SFP interfaces to interoperate with your copper or fiber network and also to provide non-blocking, wire-speed switching performance for maximum throughput.

High-density, Gigabit Ethernet Solution—GSW-4875 is equipped with 48 10/100/1000Mbps ports and 4 additional SFP ports reaching 96Gbps back plane bandwidth thus creating high-speed backbone data transmissions and meet the requirement of heavy-duty bandwidth-consuming applications. Each RJ-45 port supports Auto-MDIX allowing unlinking to another switch directly without cable selection hassle. The four SFP interfaces allow you to extend the network connection distance up to 70km or to integrate other advanced solutions for investment protection.

Smart Features—GSW-4875 supports versatile smart features efficiently to manage network resources. The Trunk function enables cascading of two or more devices with a larger bandwidth, up to ten trunk groups eliminate network bottlenecks from increased bandwidth. In order to reduce latency, increase security for confidential data and save costs for expensive routers, you can partition the network into 4096 groups of VLANs using 802.1Q Tagging technology. Moreover, the port-based QoS and 802.1p tagged QoS allow you to prioritise traffic for time-sensitive applications.

Friendly Interface—GSW-4875 offers friendly management utility to set-up device and provides web-based management interface to configure and maintain system via a general web browser. With the attached management utilities, you can easily discover the entire web management switch, assign the IP address, change the password, and upgrade the new firmware.



GSW-4875

Related Products



GNC-0106T

10/100/1000Mbps 64-bit Ethernet Card



GSW-1675/2475

16/24 Gigabit+ 2 SFP Web Smart Switch



GSW-4870TGX

48Fast + 2Gigabit + 2SFP Web Smart Switch

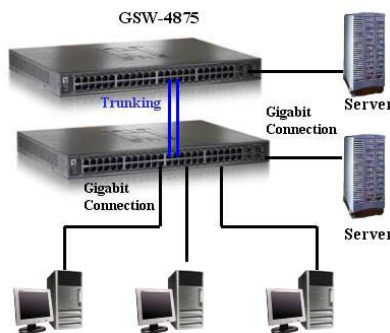
Key Features

- 48 x 10/100/1000Mbps Auto-negotiation ports
- 4 x 1000 Mbps SFP ports, share with 4 1000T ports
- All RJ-45 ports support auto MDI/MDIX
- Up to 8K MAC addresses entities per device
- 1632Kbytes packet buffer
- Half-duplex mode for 10/100Mbps connection
- Full-duplex mode for 10/100/1000Mbps connection
- Easy setting via Web Management interface
- Store-and-Forward switching scheme
- Supports up IEEE 802.1Q VLAN
- Supports trunk functions of up to 10 groups
- Supports Port-based QoS and IEEE 802.1p QoS
- Supports port setting function allow user to enable/disable each port, set speed, duplex mode and device flow control

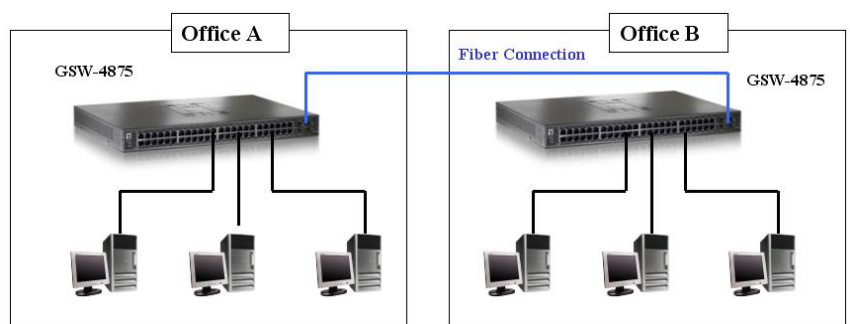
Technical Specification

- **Standards Compliance**
 - IEEE 802.3 10BaseT Ethernet
 - IEEE 802.3u 100Base-TX Fast Ethernet
 - IEEE 802.3ab 1000BaseT Gigabit Ethernet
 - IEEE 802.3x Full Duplex Flow Control
 - IEEE 802.3z 1000Base-SX/LX Gigabit Ethernet
- **Protocol**
 - CSMA/CD
- **Data Transfer Rate**
 - Ethernet: 10Mbps (Half-duplex), 20Mbps(full-duplex)
 - Fast Ethernet: 100Mbps (Half-duplex), 200Mbps(full-duplex)
 - Gigabit Ethernet: 2000Mbps(full-duplex)
- **Ports**
 - 48 x 10/100/1000 Mbps Auto-MDIX RJ-45 ports
 - 4 x SFP, 1000Base-X LC fiber ports
- **Transmission Methods**
 - Store and Forward
- **MAC Address**
 - 8K Entries
- **Packet Buffer**
 - 1632KByte
- **Network Cable**
 - 10BASE T: 2-pair UTP Cat. 3, 4, 5; up to 100m
 - 100BASE-TX: 2-pair UTP Cat. 5; up to 100m
 - 1000BASE-T: 4-pair UTP Cat. 5; up to 100m
- **QoS**
 - 4 priority queues
- **Trunking**
 - Up to 10 trunks
- **VLAN**
 - Static VLAN
 - Up to 4096 VLAN groups (802.1Q)
- **Port Configuration**
 - Speed, enable/disable, flow control
- **Firmware Upgrade**
 - Via web management utility
- **LEDs**
 - Per Unit: Power, System
 - Per Copper Gigabit Port: Link/ACT, Speed (1000M-Green, 100M-Amber)
 - Per mini-GBIC Port: Link/ACT
- **Power**
 - Consumption: near 70 W (max)
 - Power input: 100-240VAC, 50/60Hz, internal universal switching power
- **Temperature**
 - Operating: 0-40°C
 - Storage: -10-70°C
- **Humidity**
 - Operating: 10%~90% (RH)
 - Operating: 5%~90% (RH)
- **Dimension**
 - 440mm(L) * 3105mm(W) * 44mm(H)
- **Weight**
 - 8.8kg
- **EMI and Safety**
 - FCC, CE

Product Diagram



Trunking to increase bandwidth



Fiber interface to extend connection distance

Ordering Information

- GSW-4875: 48-port 1000T + 4 SFP Web Smart Switch
- GVT-0300: SFP Transceiver fits mini GBIC (550m)
- GVT-0301: SFP Transceiver fits mini GBIC (10km)
- GVT-0302: SFP Transceiver fits mini GBIC (70km)

For more information, please contact your LevelOne representative, or visit www.level1.com
All technical specifications are subject to change without notice.
All mentioned brand names are registered trademarks and property of their owners