



16-Port Gigabit Ethernet Switch



GSW-1657

H/W Version: 3

Gigabit Speed

The LevelOne GSW-1657 is a 16-port Gigabit Ethernet Switch that gives you a high-performance, low-cost, easy-to-use, seamless upgrade to boost your network to 1000Mbps. Increase the speed of your network backbone to a massive 32Gbps and bring Gigabit speeds all the way to your computers.

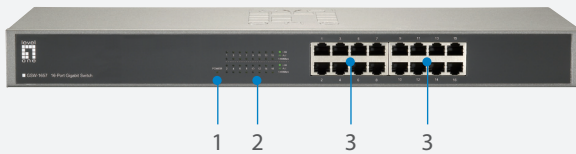
Control Your Network

With an 8K MAC address table, the GSW-1657 has no problems remembering where to send the data packets. Also featuring IEEE 802.3x flow control and

IEEE 802.1p Quality of Service functions so you have greater control over your networks. The switch also supports Auto MDI/MDI-X cable detection on all ports to eliminate the need for crossover or Uplink ports for an easy plug-and-play installation.

Rack Mountable

This 19 inch rack mountable switch with internal power is ideal for the professional office environment.



1. Power LED
2. LED Indicators
3. 10/100/1000Mbps RJ-45 Port
3. 10/100/1000Mbps RJ-45 Port
4. Power Socket

Key Features

- 10K jumbo frames to increase data transfer rates
- Supports 8K MAC address auto-learning and auto-aging
- IEEE 802.3X flow control protects against lost packets for reliable data transmission
- QoS control for traffic prioritization and bandwidth management
- Internal power supply
- 19-inch rackmount kit included

Works Well With



USB-0401
USB Gigabit Ethernet Adapter



GNS-1001
1-Bay Gigabit Network Storage

Technical Specifications

Standards

IEEE 802.1p class of service, priority protocols
 IEEE 802.3 10-BASE-T (Ethernet)
 IEEE 802.3u 100-BASE-TX (Fast Ethernet)
 IEEE 802.3ab 1000BASE-T (Gigabit Ethernet)
 IEEE 802.3X Flow Control (full-duplex flow control)

Features

MAC Address: 8K
 Buffer Memory: 512KB
 Transmission Method: Store-and-Forward
 Backplane: 32Gbps
 Jumbo Frame: 10KB

Filtering/Forwarding Rates

1000Mbps port-1488,000pps
 100Mbps port-148,000pps
 10Mbps port-14,880pps

Transmission Media

10Base T Cat. 3, 4, 5 UTP/STP
 100Base TX Cat. 5 UTP/STP
 1000Base TX Cat. 5e/6/7 UTP/STP

Network Interface

16 x 10/100/1000Mbps RJ-45 Ports

LED Indicators

Power, Link / Act, 1000Mbps

Power Input

100-240V AC, 50-60 Hz, 0.6A Internal Power Supply

Power Consumption

13.3W

Dimensions (L x W x H)

440 x 180 x 44 mm

Weight

1.68kg

Temperature

Operating: 0°C ~ 45 °C

Storage: -40°C ~ 70°C

Humidity

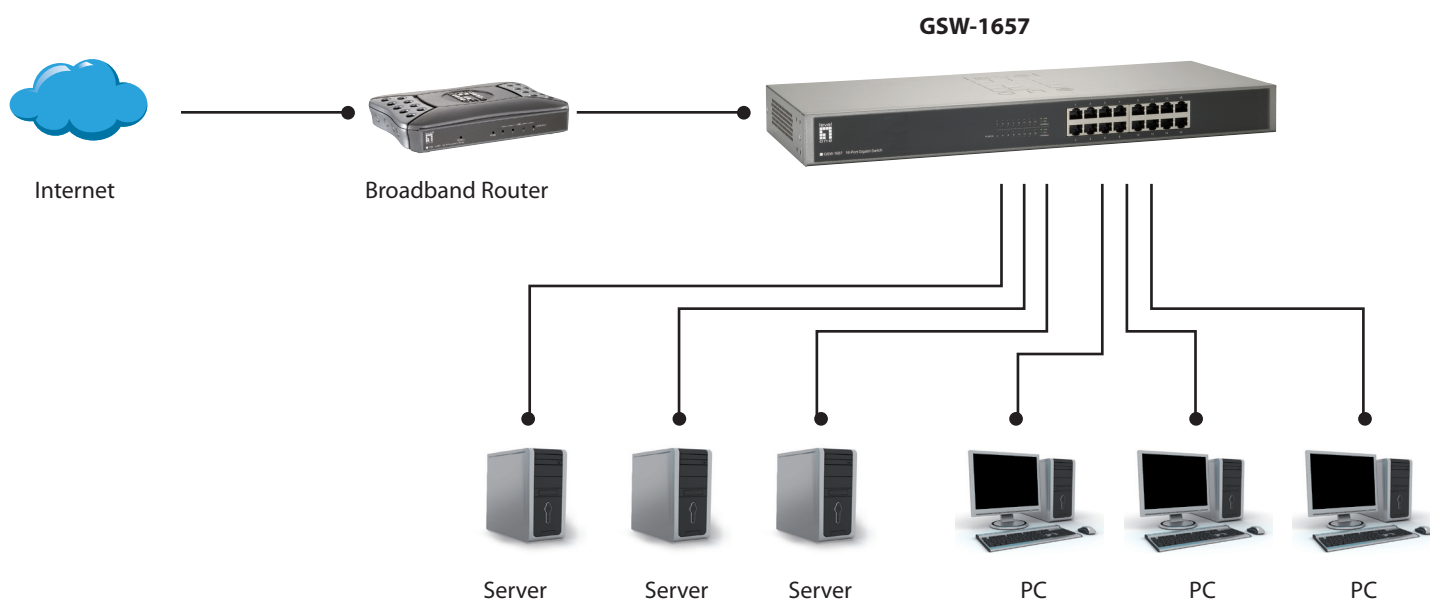
Operating: 10% ~ 90% (Non-condensing)

Storage: 10% ~ 90% (Non-condensing)

Certifications

FCC, CE

Product Diagram



Order Information

Package Contents

GSW-1657: 16-Port Gigabit Ethernet Switch

GSW-1657
 Rackmount kit
 Power Cord
 Quick Installation Guide