

16G+ 1 SFP Switch

Gigabit Ethernet Solution – LevelOne GSW-1621 Gigabit switch equips 16 Gigabit ports that lead you to a real Gigabit connection. Users are now able to transfer large and high bandwidth-needed files faster and hence get a real efficiency improvement. In addition to the copper ports, the one of the ports support fiber connection with the equipped SFP ports for obtaining long-distance communication.

Fast and Reliable Technology -- GSW-1621 offers users with fast and reliable network. The store-and-forward architecture filters errors and forwards packets in a non-blocking environment. Flow control ensures the correctness of data transmitting. The 802.3x and backpressure flow control mechanisms work respectively for full and half duplex modes.

Easy to Use -- This unit features with easy installation and maintenance. It supports Nway auto-negotiation protocol that detects the networking speed and the duplex modes (Full/Half) automatically. Auto-MDI/MDI-X function alleviates the effort to use crossover cables. For instant error detection, the switch is equipped with a full range of LEDs to help you monitor and troubleshoot problems on your network.



GSW-1621

Related Products



GSW-2420

24-port Gigabit Switch



GSW-1641

16G + 1 SFP Web Smart Switch

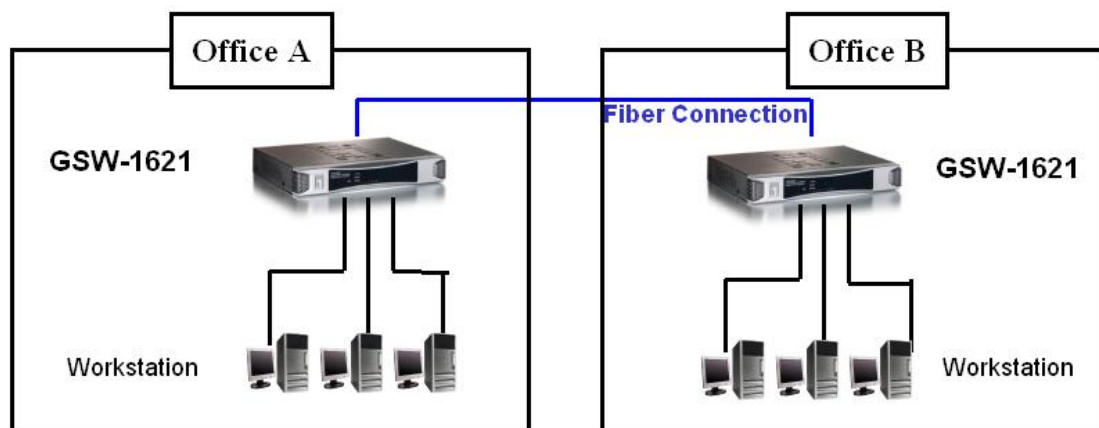
Key Features

- Complies with IEEE 802.3, 802.3u, 802.3ab and 802.3z
- 16 x 10/100/1000 Mbps RJ-45 Nway ports
- 1 x SFP for optional fibre optical communication
- Supports Auto-negotiation for speed and duplex modes for each port
- Up to 32Gbps Backplane bandwidth
- Supports Auto-MDI/MDI-X for each port
- Supports 8K absolute MAC addresses
- Supports 340K Bytes RAM for data buffering
- Supports 9K bytes Jumbo frame
- Front-panel diagnostic LEDs
- Supports back-pressure (half duplex) and flow control (IEEE 802.3x)
- Internal power adapter

Technical Specification

- **Standards Compliance**
IEEE 802.3: 10 BASE-T
IEEE 802.3u: 100 BASE-TX
IEEE 802.3z/ab: Gigabit Ethernet
IEEE 802.3x Flow Control for Full-Duplex
- **Interface**
16 x 10/100/1000 Mbps RJ-45 ports
1 x SFP port
- **Protocol**
CSMA/CD
- **Switching Method**
Store-and-Forward switching architecture
- **Transfer Rate**
14,880 pps for 10Mbps
148,800 pps for 100Mbps
1,488,000 pps for 1000Mbps
- **Cabling**
Ethernet: 2-pair UTP/STP Cat.3,4,5, EIA/TIA-568 100-ohm
Fast Ethernet: 2-pair UTP/STP Cat. 5, EIA/TIA-568 100-ohm
Gigabit Ethernet: 4-pair UTP/STP Cat.5, EIA/TIA-568 100-ohm
- **Backplane**
32 Gbps
- **MAC Address Table**
8K entries per device
- **Buffer**
340KBytes per device
- **LEDs**
Per Device: Power
Per Port: 10/100Mbps Link/ACT (green);
100/1000, Link/ACT
- **Power Supply**
100-240VAC/50-60Hz universal input; Internal power Supply
- **Power Consumption**
14.4 Watts (max)
- **Temperature**
Operating: 0°C -40°C
- **Humidity**
Operating: 10% - 90% Non-Condensing
- **Dimension**
270mm(W) * 187mm(H) * 43mm(D)
- **EMI and Safety**
FCC class A, CE, VCCI Class A

Product Diagram



Ordering Information

- GSW-1621: 16G + 1SFP Switch