

Datasheet_GNS-8000A

4-bay Rack Mounted NAS w/ 2 Gigabit Ethernet

LevelOne's NAS-8000A is designed for the premier NAS which supports 4 IDE HDD with hot swap function. With its 19", 1U rack-mountable form, powered by an Intel Celeron 1.2GHz CPU, The GNS-8000A delivers an enterprise-level NAS solution. The Dual Giga-LAN architecture provides the fail over back up and traffic load balance function. Flash memory is plug-in type for easy to maintain if flash is failed or flexible to upgrade memory when business grow up. The easily and clearly visible status LEDs and LCD panel indicate to users current system situation including power, error, network connection and display the remote duplication status.

This 4-bay NAS has hard disk drives available in 80GB, 160GB, and 240GB. It supports many disk-array technologies for backend storage, including JBOD, RAID 0, RAID 1 RAID 5 and Hot Spare. With the UPS and hot-swappable power redundant unit, GNS-8000A ensures continuous power and system functionality. Additional back-up solutions are available through the external SCSI tape drive enabling users to design the most flexible backups process to protect important enterprise data.

Using the built-in dual Giga-LAN, the GNS-8000A is immediately able to meet the requirements of increasing demands for high performance and storage capacity in such technology-sensitive business applications as instant file sharing and multimedia applications.



GNS-8000A

Key Features

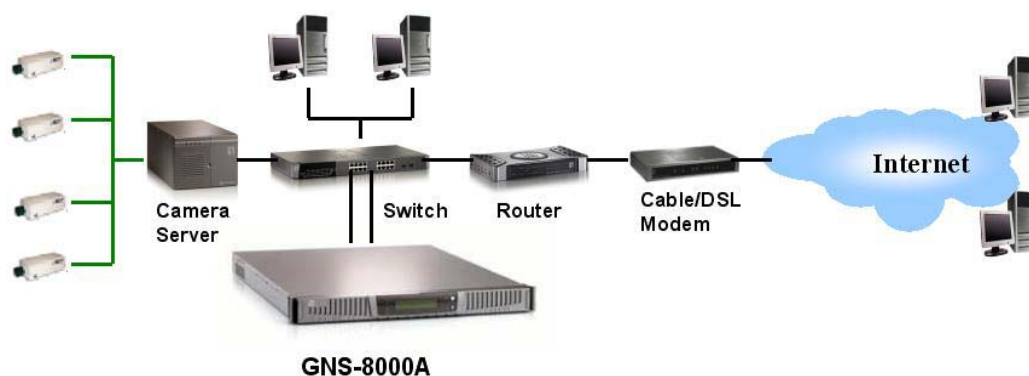
- 19", 1U rack-mounted NAS
- Dual Giga-LAN structure for data traffic load balance
- Supplies two redundant hot-swap power units
- RAID technology for data protection
- Flash memory Upgradeable
- Provides scalability of storage up to 960GB
- Supports remote displays of duplication status
- High brightness LCD panel and LEDs for visible system working status
- Supports SNMP management, E-mail alerts and audio buzzer
- Supports Unicode and Multiple-Languages
- Supports multiple operating systems and file protocols
- Easy configuration and quick launch services
- Web-based management GUI for remote distribution

Datasheet_GNS-8000A

Technical Specification

- **Processor**
Intel Celeron 1.2 GHz CPU
- **Flash Memory**
32 Mbytes
- **DRAM**
PC-133 256 Mbytes SDRAM, extensible to 512Mbytes
- **Drive Interface**
4 x 3.5" IDE HDD
- **RAID Levels**
JBOD, RAID 0,1,5
- **Ports**
2 x 10/100/1000Mbps Ethernet ports
1 x SCSI: Supports LVD SCSI Ultra 160 Tape Backup Drive
1 x RS232: Supports UPS Power Management
- **Network Standard**
IEEE802.3/ IEEE802.3u/ IEEE802.3ab
IEEE802.3x Flow Control
IEEE802.1p Priority Queue
- **Network Transport Protocols**
TCP/IP, IPX, NetBEUI, Apple Talk, NAT
- **Network File Protocols**
Microsoft Networks (CIFS/SMB)
Apple (AFP)
UNIX (NFS)
Internet (Web Browser)
File Transfer Protocol (FTP)
Novell Netware
- **Network Security**
Microsoft NT Domain Controller
User Level Security
- **Setup and Configuration**
Web-Based GUI for system administration
NAS Genie Utilities
- **System Management**
Web-Based Administration
SNMP
Disk Failure Analysis
E-mail Alert/ Alarm Buzzer
LCD Panel display
- **Data Security**
Volume/ Directory/ File
- **Network Client**
Microsoft Windows 95/ 98/ ME/ NT4.0/ 2000/ 2003/XP
Macintosh System 7.5+
Linux/ Unix
Novell
- **Language Supports**
English, Japanese, Simplify Chinese, Traditional Chinese, Major European Language
- **LEDs**
Power, Error, Network Status, HDD
- **Power Supply**
ATX Power, 90~264V
- **Redundant/ Hot Swap Power Supply**
2 x Redundant/ Hot Swap Power Supply
- **Temperature**
Operating: 0°C~45°C
- **Humidity**
Operating: 0% ~ 95%
- **Dimension**
430mm(D) * 570mm(W) * 44mm(H)
- **Weight**
12 Kg
- **EMI and Safety**
FCC, CE

Product Diagram



GNS-8000A Network Diagram

Ordering Information

- GNS-8000A: 4-bay Rack-Mounted NAS w/ 2 Gigabit Ethernet