

16 GE + 4 GE SFP Switch



GEU-1629

H/W Version: 1

Easily boost your networking throughput

The GEU-1629 16 Gigabit ports that lead you to a real Gigabit connection. Users are now able to transfer large and high bandwidth-needed files faster and hence get a real efficiency improvement. In addition to the copper ports, 4 of those ports support fiber connection with the equipped SFP ports for obtaining long-distance communication.

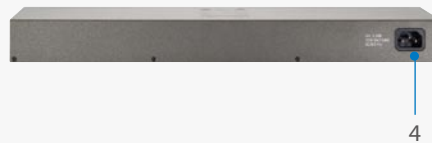
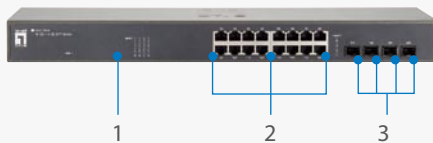
Offers users with fast and reliable network

The store-and-forward architecture filters errors and forwards packets in a non-blocking environment. Flow

control ensures the correctness of data transmitting. The 802.3x and backpressure flow control mechanisms work respectively for full and half duplex modes.

Easy installation and maintenance

It supports Nway auto-negotiation protocol that detects the networking speed (10/100/1000 Mbps) and the duplex modes (Full/Half) automatically. Auto-MDI/MDI-X function alleviates the effort to use crossover cables. Also, rich diagnostic LEDs are provided for users to get real-time information of the connection status.



1. LED Indicators
2. 10/100/1000Mbps RJ-45 Ports
3. SFP Slot
4. Internal Power Socket

Key Features

- Complies with IEEE802.3, IEEE 802.3u, IEEE 802.3ab and IEEE 802.3az standards.
- 16 x 10/100/1000 Mbps RJ-45 Nway ports
- 4 x SFP ports for optional fiber optical communication
- Supports NWay protocol for speed (10/100/1000Mbps) and duplex mode (Half/Full) auto-detection
- Support auto-detection for SFP module inset
- Supports MDI/MDI-X auto crossover
- Supports full and half duplex operation on all copper ports
- Supports back-pressure (half duplex) and flow control (IEEE 802.3x)
- Wire-speed packet filtering and forwarding rate
- Store-and-forward architecture filters fragment & CRC error packets
- Supports 9K bytes Jumbo frame.
- Supports 16K MAC address entries in whole system
- 340K bytes buffer memory

Works Well With



GNC-0105T
32-bit Gigabit Ethernet PCI Card



USB-0401
USB Gigabit Ethernet Adapter

Technical Specifications

Standard

IEEE 802.3 10Base-T Ethernet
 IEEE 802.3u 100Base-TX
 IEEE 802.3ab 1000Base-T
 IEEE 802.3az Energy Efficient Ethernet
 IEEE 802.3x Flow Control and Back Pressure

Interface

16 x 10/100/1000 Mbps RJ-45 Ports
 4 x SFP ports

NWay Protocol Support

Network speed: 10 / 100 / 1000Mbps
 10Mbps: Full/Half duplex
 100Mbps: Full/Half duplex
 1000Mbps: Full duplex

LED Indicators

1x Power LED(Power: Green),
 16 x 10/100/1000Mbps (Link/ACT: Green)

Jumbo Frame

9K bytes

Packet buffer memory

3.5Mbit

Mac Address Table

16K

Temperature

Operating: 0°C ~ 40°C (32°~104°F)
 Storage: -10°C ~ 70°C (14°~158°F)

Humidity

Operating: 10% ~ 90% RH, non-condensing
 Storage: 5%~90% RH, non-condensing

Dimension

441 x 130 x 44 mm

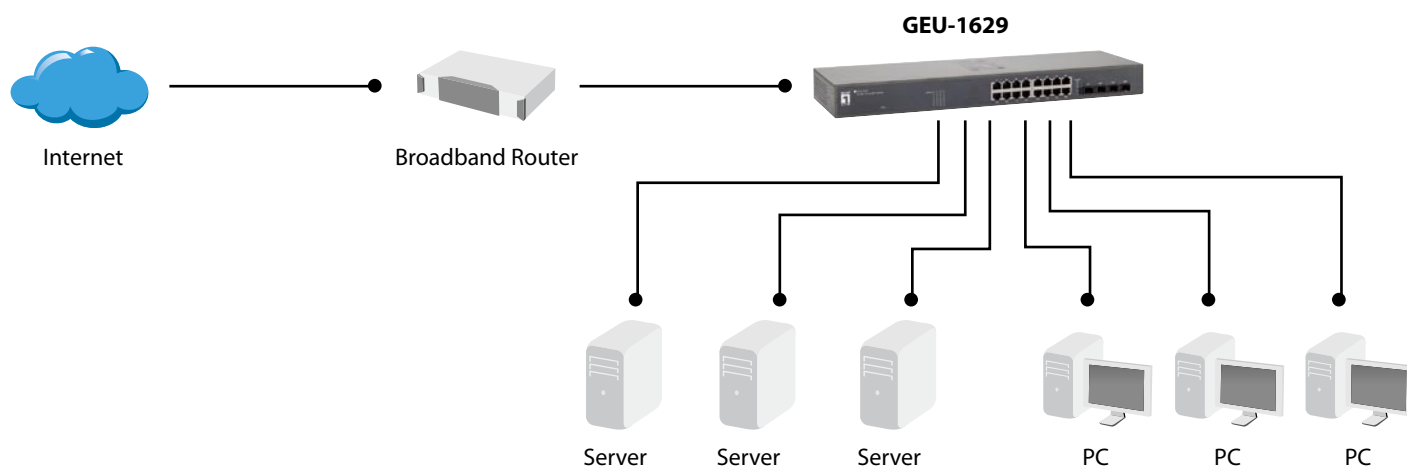
Power Supply

Internal Power Supply
 100~240VAC/50~60Hz universal input

Emission

FCC Class A, CE, VCCI Class A

Product Diagram



Order Information

GEU-1629: 16 GE + 4 GE SFP Switch

Package Contents

GEU-1629
 QIG Manual
 Power Cord
 Rack-mount Brackets
 Stackable kit

Optional Accessories



GVT-0300
Mini GBIC SFP transceiver,
SX Multi-Mode (550m)



GVT-0301
Mini GBIC SFP transceiver,
LX Single-Mode (10km)



GVT-0302
Mini GBIC SFP transceiver,
ZX Single-Mode (80km)



SFP-3001
1.25 G transceiver 850nm
VCSEL, SX (MMF 500m),
Duplex LC



SFP-3211
1.25 G transceiver , 1310 nm
FP-LD, LX (SMF 10m),
Duplex LC



SFP-3611
1.25 G transceiver , 1550nm
DFB-LD, ZX (SMF 80km),
Duplex LC



SFP-3711
1.25 G transceiver 1550nm
DFB-LD, EZX (SMF 120km),
Duplex LC



SFP-3841
1.25G Copper Transceiver
(RJ-45, 100m)



SFP-9421
1.25G BIDI, (SM 40km
1310/1550), Simplex LC



SFP-9431
1.25G BIDI, (SM 40km
1550/1310), Simplex LC