

## 16 GE + 2 GE SFP Switch



GEU-1628

H/W Version: 1

### Easily boost your networking throughput

The GEU-1628 16 Gigabit ports that lead you to a real Gigabit connection. Users are now able to transfer large and high bandwidth-needed files faster and hence get a real efficiency improvement. In addition to the cooper ports, 2 of those ports support fiber connection with the equipped SFP ports for obtaining long-distance communication.

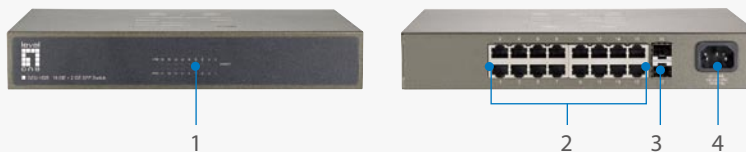
### Offers users with fast and reliable network

The store-and-forward architecture filters errors and forwards packets in a non-blocking environment. Flow

control ensures the correctness of data transmitting. The 802.3x and backpressure flow control mechanisms work respectively for full and half duplex modes.

### Easy installation and maintenance

It supports Nway auto-negotiation protocol that detects the networking speed (10/100/1000 Mbps) and the duplex modes (Full/Half) automatically. Auto-MDI/MDI-X function alleviates the effort to use crossover cables. Also, rich diagnostic LEDs are provided for users to get real-time information of the connection status.



1. LED Indicators
2. 10/100/1000Mbps RJ-45 Ports
3. SFP Slot
4. Internal Power Socket

### Key Features

- Complies with IEEE802.3, IEEE 802.3u, IEEE 802.3ab and IEEE 802.3az standards.
- 16 x 10/100/1000 Mbps RJ-45 Nway ports
- 2 x SFP ports for optional fiber optical communication
- Supports NWay protocol for speed (10/100/1000Mbps) and duplex mode (Half/Full) auto-detection
- Support auto-detection for SFP module inset
- Supports MDI/MDI-X auto crossover
- Supports full and half duplex operation on all copper ports
- Supports back-pressure (half duplex) and flow control (IEEE 802.3x)
- Wire-speed packet filtering and forwarding rate
- Store-and-forward architecture filters fragment & CRC error packets
- Supports 9K bytes Jumbo frame.
- Supports 16K MAC address entries in whole system
- 3.5Mbit buffer memory

### Works Well With



**GNC-0105T**  
32-bit Gigabit Ethernet PCI Card



**USB-0401**  
USB Gigabit Ethernet Adapter

## Technical Specifications

### Standard

IEEE 802.3 10Base-T Ethernet  
 IEEE 802.3u 100Base-TX  
 IEEE 802.3ab 1000Base-T  
 IEEE 802.3az Energy Efficient Ethernet  
 IEEE 802.3x Flow Control and Back Pressure

### Interface

16 x 10/100/1000 Mbps RJ-45 Ports  
 2 x SFP ports

### NWay Protocol Support

Network speed: 10 / 100 / 1000Mbps  
 10Mbps: Full/Half duplex  
 100Mbps: Full/Half duplex  
 1000Mbps: Full duplex

### LED Indicators

1x Power LED(Power: Green),  
 16 x 10/100/1000Mbps (Link/ACT: Green)

### Jumbo Frame

9K bytes

### Packet buffer memory

3.5Mbit

### Mac Address Table

16K

### Temperature

Operating: 0°C ~ 40°C (32°~104°F)  
 Storage: -10°C ~ 70°C (14°~158°F)

### Humidity

Operating: 10% ~ 90% RH, non-condensing  
 Storage: 5%~90% RH, non-condensing

### Dimension

266 x 185 x 44 mm

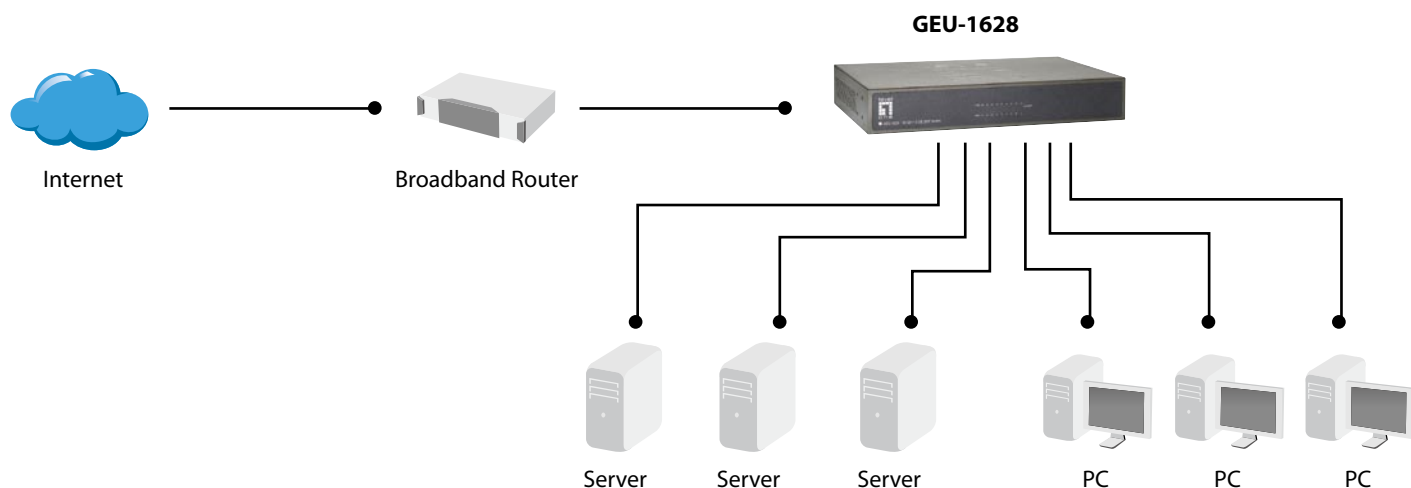
### Power Supply

Internal Power Supply  
 100~240VAC/50~60Hz universal input

### Emission

FCC Class A, CE, VCCI Class A

## Product Diagram



## Order Information

**GEU-1628:** 16 GE + 2 GE SFP Switch

## Package Contents

GEU-1628  
 QIG Manual  
 Power Cord  
 Rack-mount Brackets  
 Stackable kit

## Optional Accessories



**GVT-0300**  
Mini GBIC SFP transceiver,  
SX Multi-Mode (550m)



**GVT-0301**  
Mini GBIC SFP transceiver,  
LX Single-Mode (10km)



**GVT-0302**  
Mini GBIC SFP transceiver,  
ZX Single-Mode (80km)



**SFP-3001**  
1.25 G transceiver 850nm  
VCSEL, SX (MMF 500m),  
Duplex LC



**SFP-3211**  
1.25 G transceiver , 1310 nm  
FP-LD, LX (SMF 10m),  
Duplex LC



**SFP-3611**  
1.25 G transceiver , 1550nm  
DFB-LD, ZX (SMF 80km),  
Duplex LC



**SFP-3711**  
1.25 G transceiver 1550nm  
DFB-LD, EZX (SMF 120km),  
Duplex LC



**SFP-3841**  
1.25G Copper Transceiver  
(RJ-45, 100m)



**SFP-9421**  
1.25G BIDI, (SM 40km  
1310/1550), Simplex LC



**SFP-9431**  
1.25G BIDI, (SM 40km  
1550/1310), Simplex LC

All mentioned brand names are registered trademarks and property of their owners. Technical specifications are subject to change without notice.

© Copyright Digital Data Communications GmbH. All Rights Reserved.