

ProCon_FSW-2470

24-port Fast Ethernet/ 1 slide-in 100 Base-FX Web Smart Switch

LevelOne's Fast Ethernet Web Smart Switch FSW-2470 is equipped with 24 10/100Mbps-port Fast Ethernet and one slide-in slot for fiber modules to provide a cost-effective office network solution while operating in a reliable, extremely high-performance environment.

With optional single- or multi-mode fiber modules in SC connector, the FSW-2470 is able to interface with your copper or fiber network simultaneously to provide maximum throughput non-blocking, wire-speed switching. Each of the RJ-45 ports can auto negotiate for the best possible performance running either in full- or half-duplex mode. This unit also supports Auto-MDIX on all ports to allow up-linking to another switch-free crossover or straight cable selection. Half-and full-duplex flow control prevents packets from being dropped under heavy loading.

Friendly web management features are ready for users easily to configure and maintain the device through a general web browser. You can partition the switch into 24 groups using port-based VLAN technology. This switch also supports Class of Service (CoS) to prioritise traffic for time-sensitive applications.

For instant error detection, the switch is equipped with a full range of LEDs to help you monitor and troubleshoot problems on your network. Offering compact design (441 mm x 120 mm x 44 mm) with a rack-mounted kid, the FSW-2470 can be mounted in an EIA standard size, 19" Rack and placed in a wiring closet with other equipment to support reliable operations in extreme operating environments.



FSW-2470

Key Features

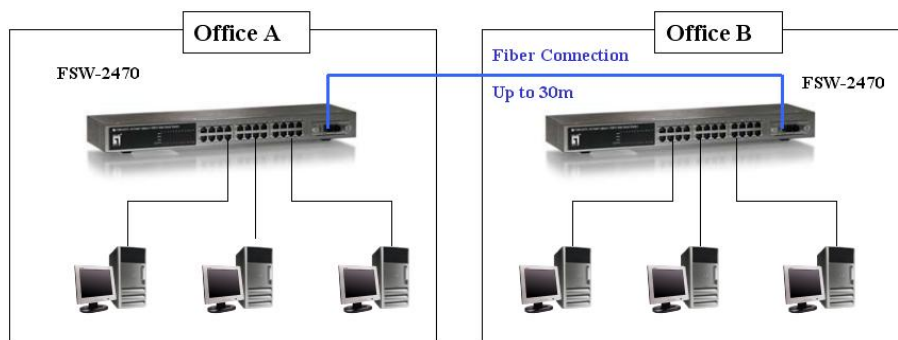
- 24 10/100Mbps ports plus 1 slide-in slot
- Complies with IEEE 802.3 10Base-T, IEEE 802.3u 100Base-TX /100Base-FX
- Optional fiber modules for copper/ fiber network integration
- Web-based management interface
- Supports port-based VLAN
- Non-Blocking full wire speed architecture
- Supports IEEE802.1p Class of Service
- Supports IEEE802.1x flow control
 - Pause frame for 10/100/1000Mbps full duplex
 - Back-pressure for 10/100Mbps half duplex
- "At-a-glance" LEDs for port and system status monitoring
- 19", 1U rack-mountable size

ProCon_FSW-2470

Technical Specification

- **Standards Compliance**
IEEE 802.3 10BASE-T Ethernet
IEEE 802.3u 100BASE-TX/100BASE-FX
IEEE 802.3x Flow Control and Back Pressure
- **Connector**
10/100TX: 24 x RJ-45
- **Protocol**
CSMA/CD
- **MAC Address Table**
4K entries with Auto learning function
- **Memory**
Packet Buffer: 1.25Mbits
- **Transfer Rate**
14,800 Packets per second for 10Mbps
148,800 Packets per second for 100Mbps
- **Network Cables**
10Base-T: 2-pair UTP/STP Cat.3/4/5, Up to 100 m
100Base-TX: 2-pair UTP/STP Cat. 5, Up to 100 m
- **Back Plane**
4.8 Gbps
- **Switch Architecture**
Store-and-Forward
- **LEDs**
Per Device: Power
Per 10/100Base-TX: Link/Activity, Full duplex/Collision
Module: Link, Full duplex/Collision, TX, RX
- **Management**
Web Interface management
- **Port Configuration**
Link speed/ Link mode
Port disable/Enable,
Port flow control disable/ Enable,
Port Auto negotiation
- **VLAN**
Port-based VLAN, entry up to 24 groups
- **QoS**
 - TCP/IP ToS/DiffServ priority field
 - IEEE 802.1p priority tag
- **Class of Service**
2 queues for High/ Low priority
- **Firmware Upgrade**
TFTP firmware upgrade
- **DHCP Client**
Enable/Disable
- **Power Supply**
100~240VAC, 50/60Hz, 3.3V/7A
- **Power Consumption**
15 Watts (max)
- **Temperature**
Operating: 0° C ~45° C
Storage: -10° C ~70° C
- **Humidity**
Operating: 10% ~ 90% (Non-condensing)
- **Dimension**
440mm(W) * 120mm(D) * 44mm(H)
- **EMI and Safety**
FCC Class A, CE

Product Diagram



Ordering Information

- FSW-2470: 24 Fast/ 1 slide-in 100 Base-FX Web Smart Switch
- MDU-2470FXC: 1-port SC 100FX multimode module (2km)
- MDU-2470F30: 1-port SC 100FX single mode module (30km)

For more information, please contact your LevelOne representative, or visit www.level1.com
All technical specifications are subject to change without notice.
All mentioned brand names are registered trademarks and property of their owners

