

## 5-port 10/100Mbps + 1-port SC Fiber Switch

**Provides Wire-speed, Non-blocking Performance** - LevelOne FSW-2106 Fast Ethernet Switch is a wire-speed, non-blocking networking device that provides 5 ports 10/100 Mbps Fast Ethernet and 1 port SC Fiber connections. This switch combines dynamic memory allocation with a store-and-forward switching architecture to ensure that the buffer is effectively allocated for each port. It also controls the data flow between transmit and receive nodes to guarantee against all possible packet loss.

**Integrated Network Connection--** The FSW-2106 features full-duplex operations to effectively double bandwidth to a throughput of 200Mbps for maximum performance. All Fast Ethernet ports support Auto-MDIX allowing uplinking to another switch with either cross-over or straight cable. The fiber port with SC interface allow users to extend the network connection distance or to integrate other advanced solutions in the future without further investment.

**Easy Configuration, Internal Power Switch--**LevelOne FSW-2106 Fast Ethernet switch is "Plug-&-Play". It does not require software configuration. Users can immediately use any of the features of this product simply by attaching the cables and turning on the power. For instant error detection, this switch is equipped with a full range of LEDs to help you monitor and troubleshoot problems on your network.

**Compact Size Design** --This unit is compact specially designed to fit on the desktop or in other space-limited locations. The FSW-2106 switch provides an ideal solution for businesses that crave a reliable network to exchange large data files and multimedia information with bandwidth-starving workgroups, departments, and offices.



**FSW-2106**

### Related Products



**FNC-0113TX**  
10/100Mbps Ethernet Card



**FSW-2218**  
8-port 10/100Mbps Fast Ethernet Switch



**GSW-0504**  
5-port Gigabit Switch w/ Internal Power

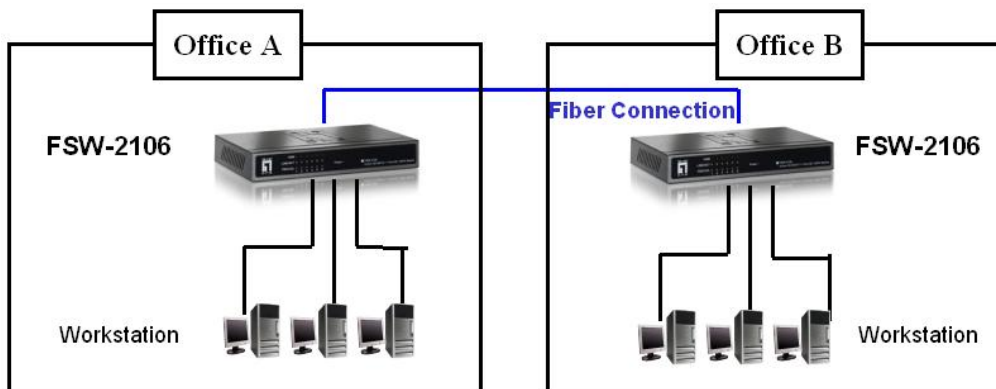
## Key Features

- Provides 5 x 10/100Mbps + 1 x SC fiber connections
- Complies IEEE 802.3 10Base-T, 802.3u 100Base-T, 100Base-FX and 802.3x flow control
- Compact size design
- Wire-speed and non-blocking forwarding rate
- Store-and-forward switching ensures error-free transmission
- 2K MAC address table
- Auto MDI/MDIX on all ports
- N-way Auto-negotiation on all ports
- Full-duplex IEEE802.1x flow control
- Half-duplex back pressure flow control
- Plug-and-Play, nothing to configure
- LEDs on front panel for easy access and real time viewing status of switch

## Technical Specification

- **Standards Compliance**  
IEEE 802.3 10Base-T Ethernet  
IEEE 802.3u 100Base-TX, 100Base-FX Fast Ethernet  
IEEE 802.3x Flow Control and Back Pressure
- **Ports**  
5 x 10/100 Mbps RJ-45 ports  
1 x SC fiber port
- **Protocol**  
CSMA/CD
- **Switch Architecture**  
Store-and-Forward
- **MAC Address Table**  
2K MAC Address Table
- **Packet Buffer**  
96KBytes
- **Transfer Rate**  
14,880 Packets per second for 10Mbps  
148,800 Packets per second for 100Mbps
- **Flow Control**  
Half Duplex: backpressure  
Full Duplex: pause frame
- **Network Cables**  
10Base-T: 2-pair UTP/STP Cat.3/4/5 cable EIA/TIA-568 100Ω(100m)  
100Base-TX: 2-pair UTP/STP Cat. 5, cable EIA/TIA-568 100Ω(100m)
- **LEDs**  
Per Device: System Power  
Per RJ-45 port: Link/Activity, Full duplex/Collision, 100Mbps
- **Power Supply**  
External Power Supply, DC 9V, 700mA
- **Power Consumption**  
6 Watts (max)
- **Temperature**  
Operating: 0° C ~45° C (32° F ~ 113° F)
- **Humidity**  
Operating: 10% ~ 90% (Non-condensing)
- **Dimension**  
164mm(L) \* 100mm(W) \* 26mm(H)
- **EMI**  
FCC Class A, CE

## Product Diagram



## Ordering Information

- FSW-2106: 5-port 10/100Mbps +1-port SC Fiber Switch