

## 16-Port Fast Ethernet Switch

### Product Overview

The FSW-1651 switch provides an ideal solution for small businesses that demand a reliable network switch that provides a high bandwidth interface between file servers and workgroups, departments and offices.

### Advanced Networking Features

The LevelOne FSW-1651 is a wire-speed, non-blocking 16 port Fast Ethernet Unmanaged Switch with an internal power supply. It provides a network with an 4K MAC address table, 3.2Gbps backplane throughput, asymmetrical flow-control support for full-duplex network connectivity, auto-negotiation and Auto-MDIX.

The 16-port Fast Ethernet Switch utilizes packet-store-and forwarding switching for error-free data transmissions and IEEE802.3x backpressure flow control to control data flow between the sending and receiving nodes as well as to prevent any data packet loss.

### Compact Design

The FSW-1651 is a compact designed network switch. Users can place the switch on any desktop area or mount it in a 19-inch server rack or cabinet by using the included rack-mounting accessory kit.

### Quick Configuration and Easy Maintenance

The LevelOne FSW-1651 does not require any software configuration. It is Plug-and-Play enabled for quick set-up and immediate use within the Local Area Network.

The 16 port Faster Ethernet Switch is equipped with a full range of LEDs for instant error detection, networking monitoring and network troubleshooting.



**FSW-1651**

## Key Features

- Provides 16 Fast Ethernet port connections
- Supports a total back plane of up to 3.2Gbps
- Wire-speed and non-blocking forwarding rate
- Supports Auto-negotiation on all ports
- Supports Auto MDI/MDIX on all ports
- Store-and-forward switching for error-free transmission
- Supports full-duplex IEEE802.1x flow control
- Supports half-duplex back pressure flow control
- Plug-and-Play enabled for easy setup and configuration
- Full LED display panel for error detection and network monitoring
- Accessory kit for mounting into a 19" server rack
- Internal power supply

### Technical Specification

#### Network Interface

##### Standards

IEEE 802.3 10Base-T Ethernet  
 IEEE 802.3u 100Base-TX Fast Ethernet  
 IEEE 802.3x Flow Control and Back Pressure  
 IEEE 802.3 N-Way Auto-negotiation

##### Network Interface

16x 10/100 Mbps RJ-45 ports

##### Network Cables

10Base-T: 2-pair UTP/STP Cat.3/4/5, Up to 100 m  
 100Base-TX: 2-pair UTP/STP Cat. 5, Up to 100 m

##### Data Transfer Rate

Ethernet: 10Mbps (Half-duplex)  
 Ethernet: 20Mbps (Full-duplex)  
 Fast Ethernet: 100Mbps (Half-duplex)  
 Fast Ethernet: 200Mbps (Full-duplex)

##### Switching Protocol

CSMA/CD

##### Switch Architecture

Store-and-Forward

##### Backplane Throughput

3.2Gbps

##### MAC Address Table

4K entries with Auto learning function

##### Memory

Packet Buffer: 160Kbytes

##### Status Indicators

Link Activity  
 Collision Status  
 Port duplex mode  
 Power

#### Physical Specifications

##### Internal Power Supply

100 ~ 240V AC, 50/60Hz

##### Power Consumption

15 Watts (max)

##### Temperature

Operating: 0°C ~ 45°C  
 Storage: -30°C ~ 60°C

##### Humidity

Operating: 10% ~ 90% (Non-condensing)  
 Storage: 0% ~ 95% (Non-condensing)

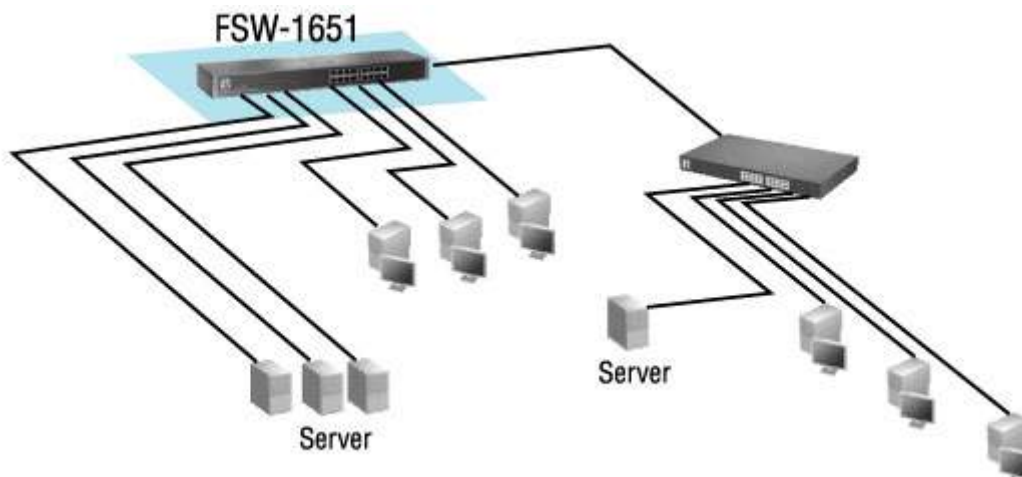
##### Dimension & Weight

125mm (L) x 440mm (W) x 44mm (H)  
 1.29kg

##### Certifications

FCC Class A  
 CE  
 RoHS

### Product Diagram



### Order Information

---

**FSW-1651:** 16-Port Fast Ethernet Switch

### Package Contents

- FSW-1651
- Power Cord
- Rack-mount Brackets
- User Manual