

Datasheet_FSW-1641TX



11" 16-port 10/100 Mbps Web Smart Switch

The FSW-1641T Gigabit Ethernet Smart Switch is a multi-speed, versatile networking device that provides 16 ports 10/100 Mbps Ethernet connections. The FSW-1641TX provides asymmetrical flow-control support for full-duplex operations, while automatically negotiating the best possible bandwidth when connecting to other networks and devices. All ports also support Auto-MDIX allowing uplinking to another switch free cross-over or straight cable selection hassle.

LevelOne's FSW-1641TX smart switch is "Plug-&-Play". It does not require software configuration. Users can immediately use any of the features of this product simply by attaching the cables and turning on the power. For instant error detection, the switch is equipped with a full range of LEDs to help you monitor and troubleshoot problems on your network. Friendly web management features are ready for users easily to configure and maintain this device through a general web browser.

The slim and unique design fits easily in any space-limited location. Users can locate the switch on the desktop. With the accessory kits, the switch can either be stacked or mounted to the rack to save space. The FSW-1641TX smart switch provides an ideal solution for small businesses that demand a reliable network to interface file servers with bandwidth-starving workgroups, departments, and offices.



FSW-1641TX

Key Features

- Supports 16 10/100 Mbps copper ports
- All ports are capable of Half-and-Full Duplex mode
- Back-Pressure flow-control supports for half-duplex operation
- Supports back plane up to 3.2 Gbps
- LEDs on front panel for easy access and real time viewing status of switch
- Accessory for stack up or rack-mount
- Web-based management Interface
- Bootp firmware upgradeable



Rack-mountable with Accessory



Stackable with Accessory

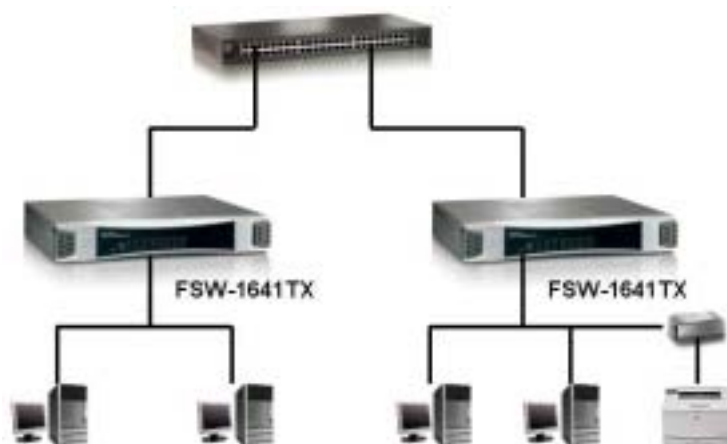
Datasheet_FSW-1641TX



Technical Specification

- **Standards Compliance**
IEEE 802.3: 10 BASE-T
IEEE 802.3u: 100BASE-TX
IEEE 802.3x Flow Control for Full-Duplex
- **Ports**
16 x 10/100 Base-TX , RJ-45 ports
- **Protocol**
CSMA/CD
- **Cabling**
Ethernet: 2 pair UTP Cat. 3,4,5
Fast Ethernet: 2 pair UTP Cat. 5
- **Bandwidth**
10 BASE-T: 10/20 Mbps (Half/ Full Duplex)
100 BASE-TX: 100/200 Mbps (Half/ Full Duplex)
- **Forwarding Rate**
148800 packets/sec per port @ 100Mbps (max)
14880 packets/sec per port @ 10Mbps (max)
- **MAC Address Table**
4K entries with Auto learning function
- **Buffer**
Embedded 1.25 Mb
- **Port Trunk**
Any port could be assigned to the trunking port
Per trunk group up to four members
- **Class of Service**
2 queues for High and low priority
- **VLAN**
Port-based VLAN, VLAN entry up to 16 groups
- **Management**
Web management interface
Bootp firmware upgrade
- **LEDs**
Per Device: 1 x Power
Per Port: 1 x Link/Act; 1x Full-Duplex/Collision; 1 x Speed
- **Power Input**
100~240VAC, 50/60Hz; 3.3V/ 4A
- **Power Consumption**
14 Watts (max)
- **Temperature**
Operating: 0°C ~45°C (32° ~ 113°F)
Storage: -10°C ~70°C (-2° ~ 158°F)
- **Humidity**
Operating: 10% ~ 90% Non-Condensing
- **Dimension**
265mm(W) * 185mm(D) * 44mm(H)
- **EMI and Safety**
FCC class A, CE

Product Diagram



FSW-1641TX Network Diagram

Ordering Information

- FSW-1641TX: 11" 16-port 10/100 Mbps Web Smart Switch

