

# Datasheet\_FPS-2013TXU

## LevelOne's 3-port 10/100Mbps Desktop Printer Server

LevelOne's FPS-2013TXU is a Ethernet printer server which is designed for office environment to share up to 3 parallel port printer resources to network users. This print server is equipped with a 10/100Mbps auto-sensing Ethernet port featuring either 10Mbps or 100Mbps network connections as well as a bi-directional parallel port that directly attaches to a parallel printer.

The FPS-2013TXU supports many operating systems including Unix, Novell, Mac system and Microsoft Windows to provide cross-platform accessibility. With the variety network protocols it supports, FPS-2013TXU offers the ideal printing solution in any working environment in order to finish your printing job easily. Moreover, this device also supports Internet Printing Protocol that allows users to print remotely to the parallel printer via the Internet. If a firmware upgrade is necessary, the printer server can be updated in place.

A number of utility programs are supplied to simplify setup and provide a quick and easy way to integrate printers into the network. Friendly web management features are ready for users easily to configure and maintain the device through a general web browser. This printer server is also fully SNMP manageable and supports all SNMP features and traps to provide full remote control for IT manager. With its standard features, the FPS-2013TXU offers the most exacting network printing solution for enterprise environment to increase the productivity and saving costs.



**FPS-2013TXU**

### Key Features

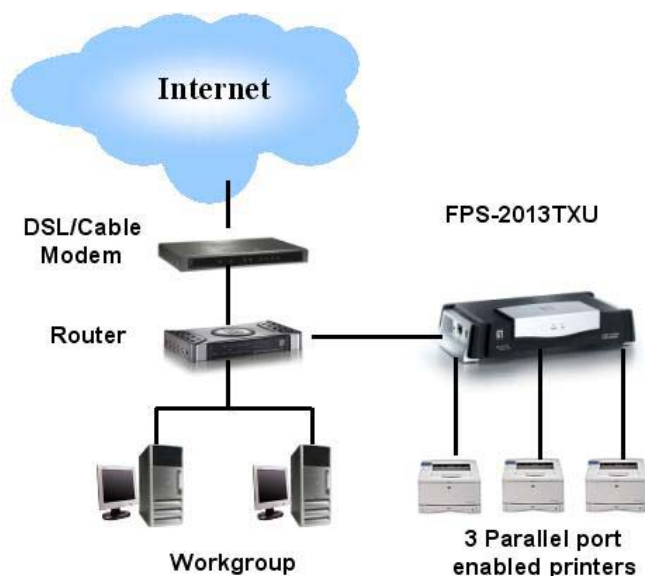
- 3 Parallel Printer Ports; 1 10/100Mbps RJ-45 port
- Supports IPX/SPX, TCP/IP, PTP over TCP/IP, PTP over TCP/IP, Apple EtherTalk, SMB over NetBEUI network protocols
- Supports SNMP and HP Web JetAdmin
- Supports PCL/ Postscript printers
- Setup by configuration software or optional web-based management interface
- Support Internet, IPP Printing
- Support Windows 95/98/98SE/ME/2000/NT, MAC, UNIX
- Firmware Upgradeable

# Datasheet\_FPS-2013TXU

## Technical Specification

- **Standard Compliance**  
IEEE 802.3; IEEE 802.3u  
IEEE 802.2 SNAP
- **Network Interface**  
1x RJ45 10/100Mbps Ports
- **Printer Port**  
3x 36-pin Parallel Port
- **Memory**  
256Kb
- **Printing Throughput**  
200 KB/sec
- **Logical Printer**  
3
- **Protocol Support**  
TCP/IP, IPX/SPX  
PTP over TCP/IP; PTP over NetBEUI  
Apple Ether Talk; SMB over NetBEUI
- **Network Environment**  
Windows 95/98/ME/2000/XP  
MAC/ UNIX/ Netware NDS & Bindery
- **Special Features**  
Internet Printing (proprietary)  
IPP (Internet Printing Protocol)  
Bi-directional IEEE 1284
- **Management**  
WebAdmin Management  
BiAdmin Management  
NWAdmin Management  
HP's JetAdmin  
SNMP Management
- **LEDs**  
Status/ Error indicator  
Link
- **Power Input**  
12V DC , 800mA~1000mA ;External Power Adapter
- **Printer Consumption**  
5Watt. Max
- **Temperature**  
Operating: 0°C~40°C  
Storage: -10°C~70°C
- **Operating Humidity**  
Operating: 10% ~ 80%  
Storage: 5% ~ 90%
- **Dimensions**  
315mm(W)\*160mm(D)\*69mm(H)
- **Certification**  
FCC, CE

## Product Diagram



## Ordering Information

- FPS-2013TXU: 3 Parallel-Port 10/100Mbps Desktop Printer Server