



24-Port Fast Ethernet Switch



FEU-2410

H/W Version: 1

Product Overview

The LevelOne FEU-2410 is a 10/100Mbps NWay Unmanaged Switch with outstanding performance and high efficiency. With 24 NWay auto-negotiation ports, this switch fulfills the needs of connecting users on a network with automatic selection of best network speed and duplex mode.

Power Saving Features

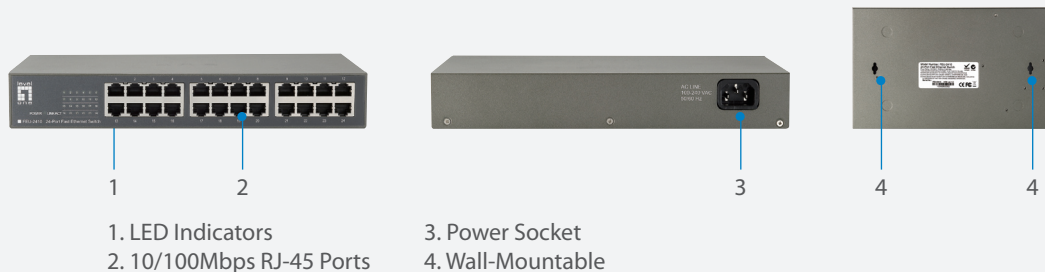
The FEU-2410 supports Green Ethernet and is compliant with IEEE 802.3az Energy Efficient Ethernet to provide power-saving benefits without compromising performance. One way is to automatically detecting the length of connected cables and to adjust power usage by saving energy on shorter cable connections.

Traffic Prioritization (Quality of Service)

The FEU-2410 supports IEEE802.1p priority queuing Quality of Service which provide considerably enhance download quality. User can reserve bandwidth for important functions that require a large bandwidth or have a high priority, such as VoIP, web browsing application or video conferencing.

Easy to Use

The FEU-2410 is plug-and-play and supports all kind of network protocols to make installation and network management easy and fast. LED indicators provide a quick and easy way to read port and switch information.



Key Features

- 24 x 10/100Mbps RJ-45 NWay Ports
- Supports NWay protocol for speed (10/100Mbps) and duplex mode (full/half) detection
- Supports MDI/MDI-X auto crossover and support full/half duplex operation on all ports
- Supports back-pressure (half duplex) and flow control (IEEE 802.3x)
- Wire-speed packet filtering and forwarding rate
- Store-and-forward architecture filters fragment and CRC error packets
- Provides LED indicators for network diagnostics
- Metal casing with internal power supply
- Supports IEEE802.1p priority queuing Quality of Service
- Supports IEEE 802.3az Energy Efficient Ethernet

Works Well With



FNC-0107TX
Fast Ethernet PCI Card with Wake-On LAN function



USB-0301
USB Fast Ethernet Adapter

Technical Specifications

Standard

IEEE802.3 (10BASE-T)
IEEE802.3u (100BASE-T)
IEEE802.3x Flow Control
IEEE802.3az Energy Efficient Ethernet
IEEE802.1p QoS

Interface

24 x 10/100Mbps NWay RJ45 ports
NWay Protocol Support
Network speed: 10/100Mbps
Duplex mode: Full and Half

Backplane (Gbps)

4.8Gbps

MAC Address Table

8K

Buffer Memory

256KB

Filtering/Forwarding Rate

10Mbps: 14,880pps/14,880pps
100Mbps: 148,800pps/148,800pps

LED indicators

System: Power

Port: Link/Act

Power Supply

Internal power 100~240V AC, 50~60 Hz

Operating Temperature

0°C ~ 40°C (32°F ~ 104°F)

Operating Humidity

10% ~ 90% (non-condensing)

Dimensions (L x W x H)

267mm x 161mm x 42mm

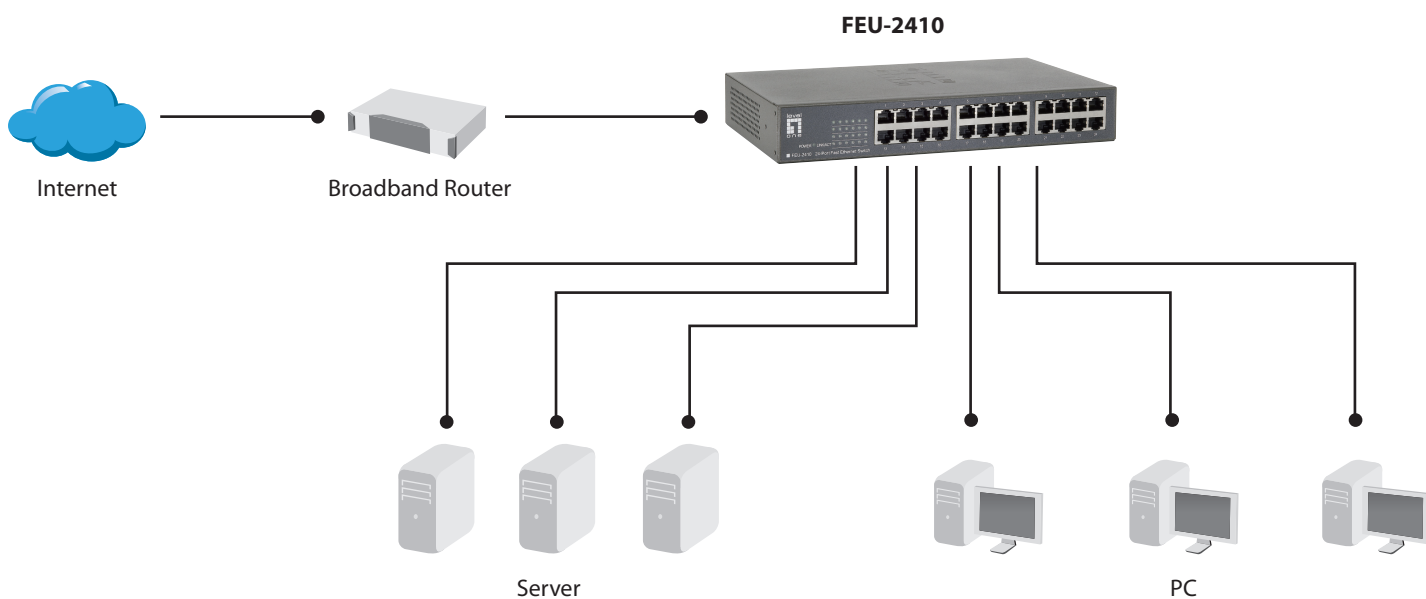
Case Material

Metal

Emission

FCC/CE/VCCI Class B

Product Diagram



Order Information

Package Contents

FEU-2410: 24-Port Fast Ethernet Switch

FEU-2410

Power Cord

Rubber Feet x 4

QIG Manual

Rack Mount Bracket x 2

Wall Mount Kits