



# 16-Port Fast Ethernet PoE Plus Switch



FEP-1611

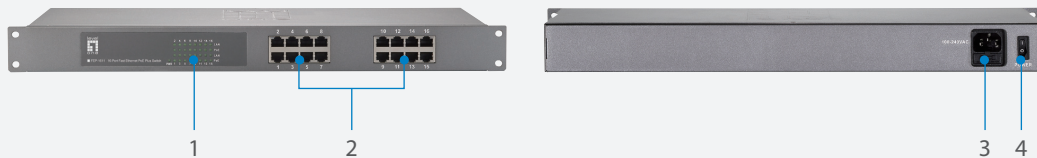
H/W Version: 2

## Product Overview

The LevelOne FEP-1611 provides 16 x 10/100Mbps ports with IEEE 802.3at PoE plus supported. This switch is IEEE 802.3at/af compliant, and provides power and data over a single Ethernet cable to any PoE device, with total power budget of 240W, up to 30W per port. Ideal for desktops and it is also 19-inch rack-mountable, which provides convenient and flexible installation. The FEP-1611 is designed for small-to-median businesses that prefer an affordable solution for PoE deploying infrastructure.

## Cost Effectiveness And Enhanced Flexibility

Featuring Power over Ethernet Plus (PoE+) technology (IEEE 802.3at), which nearly doubles the power delivery comparing to the IEEE 802.3af PoE technology. Furthermore, it ensures that the power is used more efficiently due to the maximum power will only be requested when it is needed. Thus providing great cost savings by reducing power bills and eliminating the need for additional power cables and outlets.



1. LED Indicators
2. 10/100Mbps RJ-45 PoE Ports
3. Power Socket
4. Power On / Off Switch

## Key Features

- IEEE 802.3at PoE Plus compliant to simplify deployment and installation
- Auto-detection and protection of non-standard PoE devices
- 19-inch metal housing
- IEEE 802.3x flow control protects against lost packets for reliable data transmission
- Total PoE power budget: 240W, up to 30W per port
- Internal power supply

## Works Well With



**FCS-5061**  
Day/Night 5-Megapixel PoE Plus  
Outdoor Network Camera



**WAP-6012**  
300Mbps Wireless Gigabit PoE  
Access Point



## Technical Specifications

### Standards

IEEE 802.3 10-BASE-T (Ethernet)  
 IEEE 802.3u 100-BASE-TX (Fast Ethernet)  
 IEEE 802.3x Flow Control (full-duplex flow control)  
 IEEE 802.3af Power over Ethernet  
 IEEE 802.3at Power over Ethernet Plus

### Features

MAC Address: 4K  
 Buffer Memory: 160KB  
 Transmission Method: Store-and-Forward  
 Backplane: 3.2Gbps

### Filtering/Forwarding Rates

100Mbps port-148,000pps  
 10Mbps port-14,880pps

### Transmission Media

10Base T Cat. 3, 4, 5 UTP/STP  
 100Base TX Cat. 5 UTP/STP

### Network Interface

16 x 10/100Mbps RJ-45 PoE Ports

### PoE Spec

PoE Standard: IEEE 802.3af/at Power over Ethernet / PSE  
 PD classification identity  
 PoE over current protection  
 PoE circuit sorting protection  
 PoE Power Output: Per Port 56V DC, Max. 15.4 watts (IEEE 802.3af) or 30 watts (IEEE 802.3at)  
 Power Budget: Max. 240W  
 Power Pin Assignment: 1/2(+), 3/6(-)

### LED Indicators

Power, Active, 10/100M, PoE

### Power Input

100-240V AC, 50-60 Hz, 5A Internal Power Supply

### Power Consumption

250W

### Dimensions (L x W x H)

480 x 200 x 44mm

### Weight

2.85kg

### Temperature

Operating: 0~45 Degree °C  
 Storage: -40~70 Degree °C

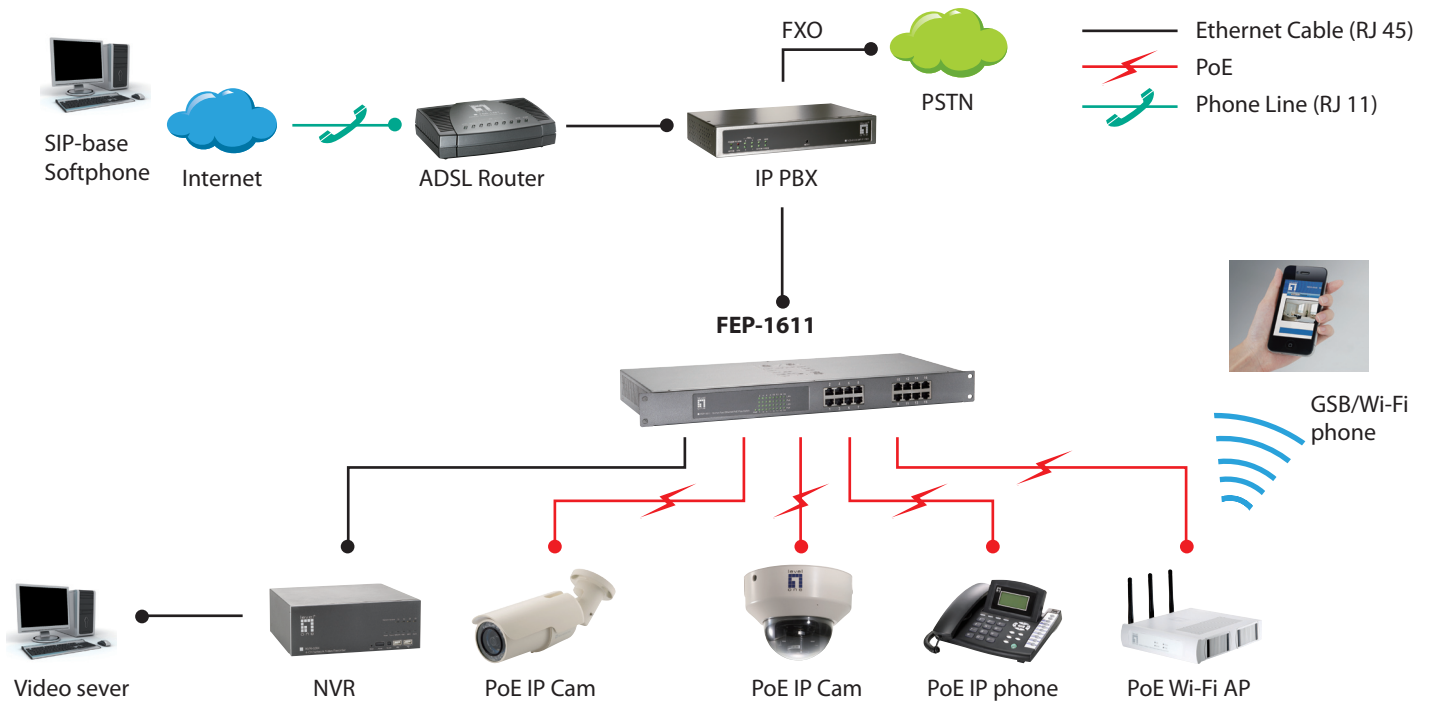
### Humidity

Operating: 10~90% (Non-condensing)  
 Storage: 10~90% (Non-condensing)

### Certifications

FCC, CE

## Product Diagram



**Order Information**

**Package Contents**

**FEP-1611:** 16-Port Fast Ethernet PoE Plus Switch

FEP-1611

Rubber Feet x 4

Power Cord

Quick Installation Guide