



# IP CamSecure Surveillance Management Software



FCS-9064

## Powerful Surveillance Management Software

LevelOne has developed advanced featured surveillance management software that compliments our digital IP Surveillance Cameras. The IP CamSecure designed to support up to 64 channels simultaneously. it supports advanced feature such as Live/Playback Video, PTZ control, motion detection, E-Map and Event alert, remote access via PDA/Smart-Phone/iPhone and so on.

## Megapixel/H.264/E-Map

The IP CamSecure provides video file with the support of H.264 compression format to reduce the storage cost of megapixel cameras. It also supports 2-Layer of E-Map to identify the location of all the cameras. In case of an emergency, an E-Map will pop up on your computer's screen with the exact location of the security breach.

## iPhone/Smart Phone/PDA support

It can be accessing an IP CamSecure surveillance system remotely over the Internet from an Apple

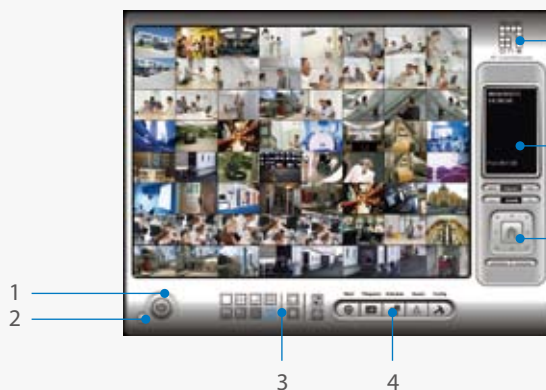
iPhone by using the built in Safari web browser. Also support Smart Phone and PDA clients on Windows Mobile 5.x/6.x platform and support resolution between 320x240 and 480x800 (the video will fit to 4:3 aspect ratio automatically).

## Dual Monitoring Function

It enables the software to display on dual screens for multitude of cameras. For example: on first screen up to 64 channels can be viewed, with the second screen only displaying highlighted cameras for quick monitoring. The second screen can also be used to playback recorded segments while the first screen maintains live viewing capability.

## Protecting existing CCTV investments

The IP CamSecure surveillance software enable users to use both digital and analog camera s in one system. You can integrate your existing analog system into an IP-based solution by Levelone analog camera capture card.



1. Exit
2. Minimize
3. Screen Division
4. Tool Bar
5. Crystal Ball
6. Information Window
7. P/T/Z Camera Control

## Key Features

- Supports H.264/MJPEG/MPEG4 compression
- Supports Megapixel and P/T/Z IP camera
- Monitor up to 64 channels simultaneously
- Dual monitor display for live view and playback simultaneously
- Supports 2 layers of E-Map
- Supports Wide Screen for 16:9 layouts
- Supports iCamSecure Apple App and iOS Safari)
- Easy installation and maintenance
- Supports 30 languages interface
- Supports Web-based/PDA/Smart-Phone/iPhone remote monitoring
- Support both digital and analog cameras in one system

## Technical Specification

### IP CamSecure Pro Mega Series

### IP CamSecure

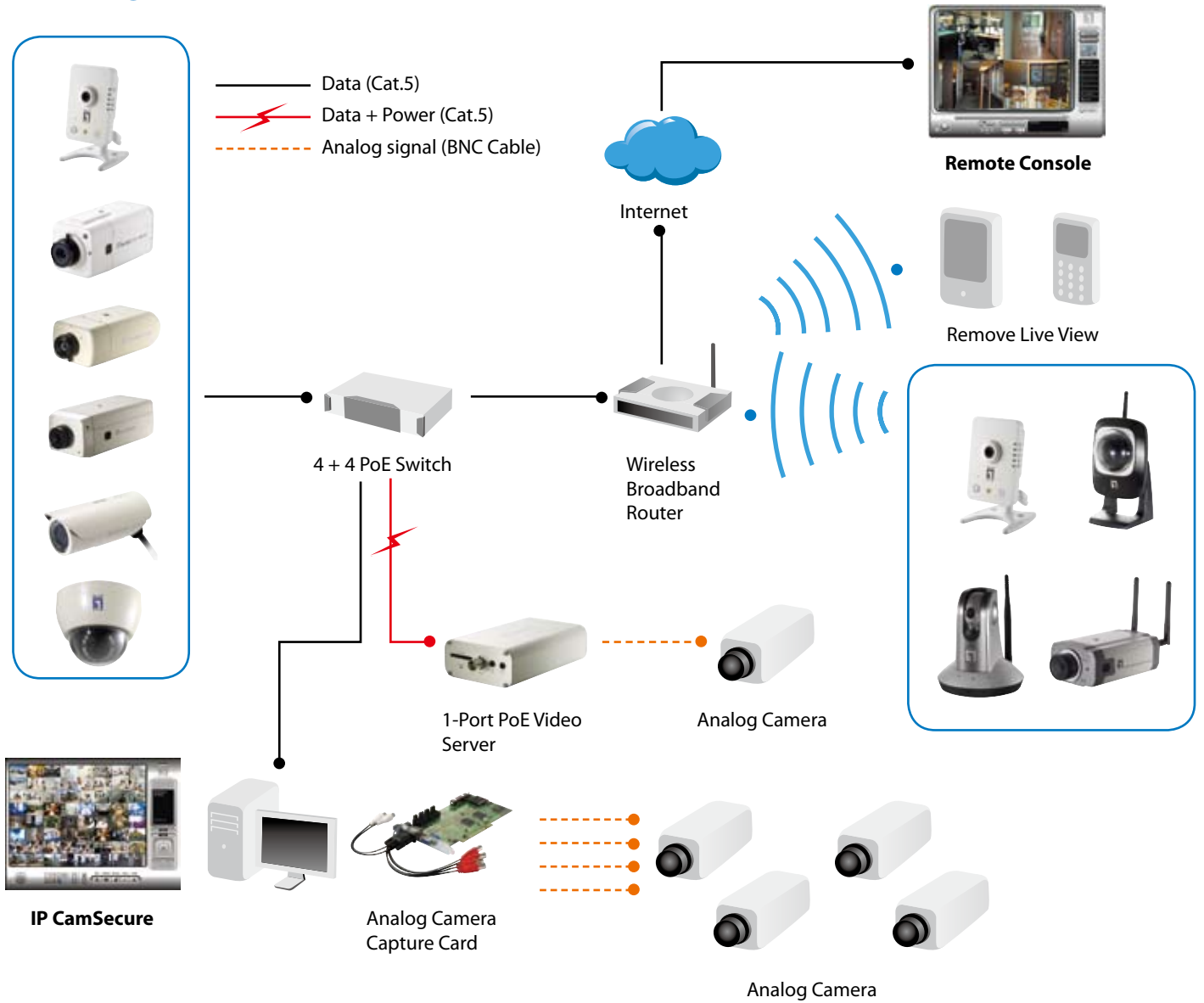
Main Features		
Max # of Cameras Live View, Monitor and Record	<b>FCS-94 04/08/16/25/36/64</b> 4/8/16/25/36/64	<b>FCS-9064</b> 64
Compatibility	*Compatible with LevelOne IP cameras. More IP cameras of other major manufacturers supported by <b>FCS-94xx</b> .	
Multi-Language Embedded	Brazil, Bulgaria, Traditional / Simple Chinese, Czech, Danish, Dutch, English, Farsi, Finnish, French, German, Greek, Hebrew, Hungarian, Italian, Japanese, Korean, Norway, Polish, Portuguese, Romanian, Russian, Serbia, Slovak, Slovenian, Spanish, Swedish.	
Hybrid Camera Management	Monitor IP digital and CCTV analog cameras in one surveillance system	
Multiple Monitor display	Up to 3 monitor	Up to 2 monitor
E-Map	Up to 10 layers	Up to 2 layers
Smart Guard	Events triggered by general motion detection, missing/ foreign object detection, signal lost, camera occlusion, lose focus, external input or system status	No
Motion Detection	Camera-based motion detection with image exclude filter for image areas of no interest in specific period status	
Smart Search	Search unusual events with specific parameters from recorded video	General Motion Only
Alarm Notification	Play sound, send emails, PoP up E-MAP on event, make phone calls, P/T/Z PRESET GO, Signal digital output, Send a SMS message, Send Snapshot to FTP/Email, on screen display and instant recording.	Instant recording
Counting Application	Count how many times objects move between different locations	No
Video Compression	MJPEG / MPEG4 / H.264	
Audio	Support full duplex real time audio	
User Account	Multiple user authentication levels with password restriction rules for unlimited users	
Log Viewer	All unusual events ,system events by date/time and/or cameras	
Recording	Continuous recording, manual recording/snapshot, record by schedule, record by digital input or triggered event, and record moving only (pre/post record buffer is up to 60 seconds).	
3GPP	**Monitor in 3G mobile devices which are equipped with 3G video playback.	No
iPhone/Smart Phone/PDA	Yes	
Digital Watermark	Yes	No
DDNS	Support DtDNS and Dynu.	No
UPnP	Search for IP cameras via UPnP	
Upgrade	No extra charge required for the further upgrade	
Playback		
Simultaneously Playback	16-CH	1-CH
Image Enhancer	Improve recorded video to get better image during playback and can be applied during export	
Search for Recordings	Search for recordings based on date, time or specific video parameters	Search for motion in continuous recordings
Playback	Controllable speed 1/16x~16x or frame by frame	
Video Clip Export	Export single BMP/JPEG/GIF/PNG/TIFF images to file or printer; Export video in AVI	
P/T/Z and I/O		
Pan/Tilt/Zoom Support	Control of P/T/Z cameras and preset positions	
Preset Patrolling	Multiple cameras patrolling	
Go to Preset on Event	Yes	No
Input/Output Control	Support digital input/output control	
Remote Access Via Remote Client Software		
Remote Client Service	Remote Live Viewer/ Remote Playback	Remote Live Viewer/Remote Playback
Pan/Tilt/Zoom Support	Control of P/T/Z cameras	
Max # of Cameras Live View	Up to 16-CH from different servers	1-CH remote live view
Max # of Cameras Playback	Up to 16-CH	1-CH remote live view
PDA / Smart Phone Client (WM 5.0 or above)	Up to 16-CH snapshot or 1-CH live display; P/T/Z and I/O control	1-CH remote live view
iPhone Safari	Up to 16-CH snapshot or 6-CH live display and P/T/Z	1-CH remote live view
iPhone Viewer	Up to 64-Ch, 6-CH per page, total up to 64-CH (depends on server)	N/A
Remote Access Via Web Browser		
Max # of Cameras Live View/Playback	Up to 4-CH / Up to 4-CH	1-CH / No support Playback
Support Browser (PC/NB)	IE browser	
Minimum System Requirements		
CPU	Intel Core 2 Quad Q9400, Intel Core I5, Intel Core I7	Intel core 2 Duo E5300
RAM	2GB above	
Display	ATI Radeon 4650, nVIDIA GeForce GF-9600, Intel 945G/965G, or above (ATI recommended)	1GB
Hard Disk	250 GB or above	
OS	MS Windows XP/Vista/ Server 2008(32bit)/7	

\*Please visit [www.level1.com](http://www.level1.com) for the compatible product list.

\*\*This feature depends on the mobile telecom service provided and the mobile phone model. LevelOne does not guarantee that this feature will work in all countries.

\*\*\*The specification is subject to change. Please visit [www.level1.com](http://www.level1.com) for the latest specification. Users can upgrade IP CamSecure Lite(older version) to IP CamSecure(v1.26)

## Product Diagram



## Order Information

**FCS-9064:** IP CamSecure Surveillance Management Software

## Package Content

CD Manual / Utility  
Quick Installation Guide