

1-Port PoE Video Server

Product Overview

LevelOne provides video servers that enable analog surveillance cameras to be incorporated into an IP-based surveillance system.

Analogue to Digital IP Conversion

The LevelOne FCS-7011 PoE Video Server converts analog video signals from analog surveillance cameras into digital video signals that are then transmitted via an IP-based network to a monitoring station. Also, these video servers can control Pan/Tilt cameras without the need of a PC installed.

PoE Functionality

Enabled with PoE functionality, the FCS-7011 receives its power requirement from the LAN and there is no need to install power outlets close to the video server. Instead of receiving power from DC12V1A, it will still transit by plugging in PoE switch.

Multiple Video Compression and 2-way Audio

The FCS-7011 Video Server transmits digital video signals at 704x480 pixels at 30 frames per second. It also supports MPEG4 and M-JPEG video compression; provide 2-way audio and features advanced motion detection.

Free Bundled Software

The FCS-7011 video server also comes bundled with LevelOne's 32-channel surveillance software, IP CamSecure Lite that is upgradeable to IP CamSecure Pro, IP CamSecure Pro Plus or IP CamSecure Pro Mega for added functionality and advanced surveillance management features.



FCS-7011

Key Features

- Supports MPEG4/MJPEG Video Compression modes
- Fully compliant with IEEE802.3af standard for PoE functionality
- Features 2-way Audio
- BNC Connector for Video Out
- Built-in advanced Motion Detection capability
- Digital Input/Output ports to connect to sensor and alarm systems
- Bundled with LevelOne 32-channel surveillance software, IP CamSecure Lite

Technical Specification

Video Specifications

- **Compression Mode**
MJPEG/MPEG4
- **Max Resolutions**
704x480 at 30 fps (NTSC)
704x576 at 25 fps (PAL)
- **Video Resolution**
160x120 at 30/25 frames per second
320x240 at 30/25 frames per second
704x480 at 30/25 frames per second

Hardware Environment

- **Network Interface**
1x RJ45 10/100Mbps port
- **Temperature**
Operating: 0°C ~ 50°C (32°F ~ 122°F)
- **Humidity**
Operating: <95% (Non-Condensing)

Audio Specifications

- **Audio Codec**
G.711 PCM 64 kbits
ADPCM 32 kbits
MP3
MPEG G4 – AAC full duplex

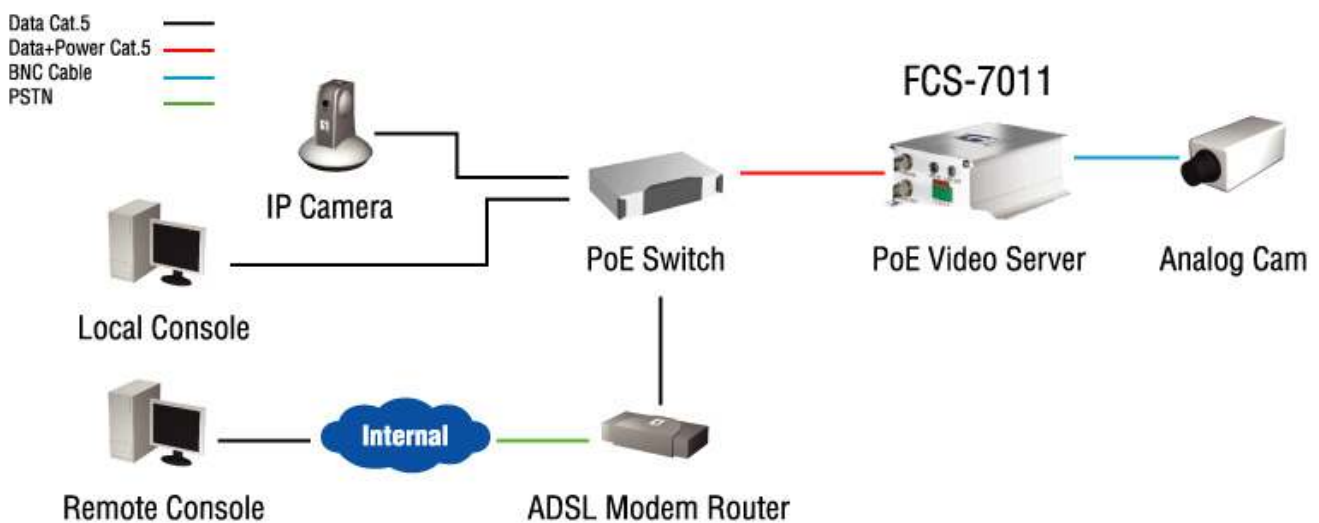
Viewing System Requirements

- **OS**
Microsoft Windows 2000/XP/VISTA
- **Browser**
IE5.5 or above

Certifications

- **EMI and Safety**
FCC Class B
CE mark Class B

Product Diagram



Order Information

FCS-7011: 1-Port PoE Video Server

For more information, please contact your LevelOne representative, or visit www.level1.com.
All technical specifications are subject to change without notice.
All mentioned brand names are registered trademarks and property of their owners.

www.level1.com