



Day/Night Speed Dome Pro Network Camera (35x)



FCS-4020

H/W Version: 1

Product Overview

FCS-4020 (NTSC/PAL) is the latest high performance speed dome network camera integrated with a SONY 35x zoom lens and Exview HAD CCD sensor. It is designed for professional outdoor surveillance applications that required high reliability, sharp images, and weatherproofing (IP66 rated).

Wide Dynamic Range (WDR), highest quality images, day/night available

With WDR technology enables that creates balanced, well-lit images, even when the camera is pointing directly into the sun.

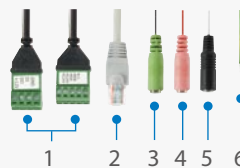
The FCS-4020 in corporate a removable IR-cut filter, It is capable of detection at near infrared light region with great proficiency, drastically improving light sensitivity, especially during the nighttime.

Electronic Image Stabilization

Featuring EIS technology, FCS-4020 can mitigate the influence of vibration caused by winds or camera rotation so as to ensure stable and recognizable image quality at all times. The 3D privacy mask function guarantees that private areas are completely sheltered even when the camera pans, tilts, and zooms. In addition, the FCS-4020 incorporates an SD/SDHC card slot so as to offer temporary on-board recording.

Powerful, feature rich IP Network Camera

FCS-4020 offers users the most advanced features, includes 3GPP mobile surveillance, dual-codec, dual-stream, two-way audio via SIP protocol, digital I/O, 802.1X authentication for network protection, and USB joystick for remote pan/tilt/zoom control. With LevelOne FCS-4020, these exceptional features provide efficient operational flexibility to meet customers' needs in surveillance



1. General I/O terminal block
2. Ethernet 10/100 RJ45 plug
3. Audio out (green)
4. Microphone in (pink)
5. Power cord socket (black)
6. Earth

Key Features

- SONY 1/4" EXview HAD CCD Sensor in D1 Resolution
- WDR (Wide Dynamic Range) for High Contrast Environments
- 35x Zoom Lens, 360° Continuous Pan and 90° Tilt
- Removable IR-cut Filter for Day and Night Function
- Real-time MPEG-4 and MJPEG Compression (Dual Codec)
- Dual Streams Simultaneously
- Weather-proof IP66 rated Housing
- 3D Privacy Masks for Private Area Protection
- 3GPP Mobile Surveillance
- Two-way Audio via SIP Protocol
- Built-in SD/SDHC Card Slot for On-board Storage

Works Well With



FCS-9400
IP CamSecure Pro Series Surveillance Management Software



NVR-0216
16-CH Network Video Recorder



Technical Specification

System

Flash: 8MB
 RAM: 64MB + 32MB
 Embedded OS: Linux 2.6

Pan/Tilt/Zoom

Pan range: 360° continuous rotation
 Tilt range: 0° ~ 90° flip
 35x optical zoom
 Pan speed: 0.1° ~ 300°/sec
 Tilt speed: 0.1° ~ 120°/sec
 Auto pan mode
 Auto patrol mode

Lens

35x optical zoom lens, f = 3.4 ~ 119 mm, F1.4 (wide), F4.2 (tele), auto-iris, focus range: 10 mm (wide), 1,000 mm (tele) to infinity
 Removable IR-cut filter for day & night function

Angle of View

1.7° ~ 55.8° (horizontal)

Shutter Time

1/2 sec. to 1/30,000 sec. (NTSC)
 1/1.5 sec. to 1/30,000 sec. (PAL)

Image Sensor

SONY 1/4" EXview HAD CCD sensor in D1 resolution

Minimum Illumination

0.05 Lux / F1.4 (Color)
 0.01 Lux / F1.4 (B/W)

Video

Compression: MJPEG & MPEG-4
 Streaming:
 Simultaneous dual streams
 MPEG-4 streaming over UDP, TCP, HTTP or HTTPS
 MPEG-4 multicast streaming
 MJPEG streaming over HTTP or HTTPS
 Supports 3GPP mobile surveillance
 Frame rates:
 MPEG-4: Up to 30/25 fps at 704x480 (NTSC) /704x576 (PAL)
 MJPEG: Up to 30/25 fps at 704x480 (NTSC) /704x576 (PAL)

Image Settings

Adjustable image size, quality, and bit rate
 Time stamp and text caption overlay
 Flip & mirror
 Configurable brightness, contrast, saturation, sharpness, white balance and exposure
 AGC, AWB, AES
 WDR (Wide Dynamic Range)
 EIS (Electronic Image Stabilizer)
 Automatic, manual or scheduled day/night mode
 BLC (Backlight Compensation)
 Supports 3D privacy masks

Audio

Compression:
 GSM-AMR speech encoding, bit rate: 4.75 kbps to 12.2 kbps
 MPEG-4 AAC audio encoding, bit rate: 16 kbps to 128 kbps
 Interface:
 External microphone input
 Audio output
 Supports two-way audio via SIP protocol
 Supports audio mute

Networking

10/100 Mbps Ethernet, RJ-45
 Protocols: IPv4, IPv6, TCP/IP, HTTP, HTTPS, UPnP, RTSP/RTP/RTCP, IGMP, SMTP, FTP, DHCP, NTP, DNS, DDNS, PPPoE, CoS, QoS and 802.1x

Alarm and Event Management

Triple-window video motion detection
 Four D/I and one D/O for external sensor and alarm
 Event notification using HTTP, SMTP or FTP
 Local recording of MP4 file

On-board Storage

SD/SDHC card slot
 Stores snapshots and video clips

Security

Multi-level user access with password protection
 IP address filtering
 HTTPS encrypted data transmission
 802.1X port-based authentication for network protection

Users

Live viewing for up to 10 clients

Dimension

Ø 200 mm x 270 mm

Weight

Net: 3,800 g

LED Indicator

System power and status indicator
 System activity and network link indicator

Power

24V AC 2A 60 Hz/50 Hz
 Power consumption: Max. 45 W

Housing

Weather-proof IP66-rated housing

Approvals

CE, LVD, FCC,

Operating Environments

Temperature: -20 ~ 60 °C (-4 ~ 140 °F)
 Humidity: 90% RH

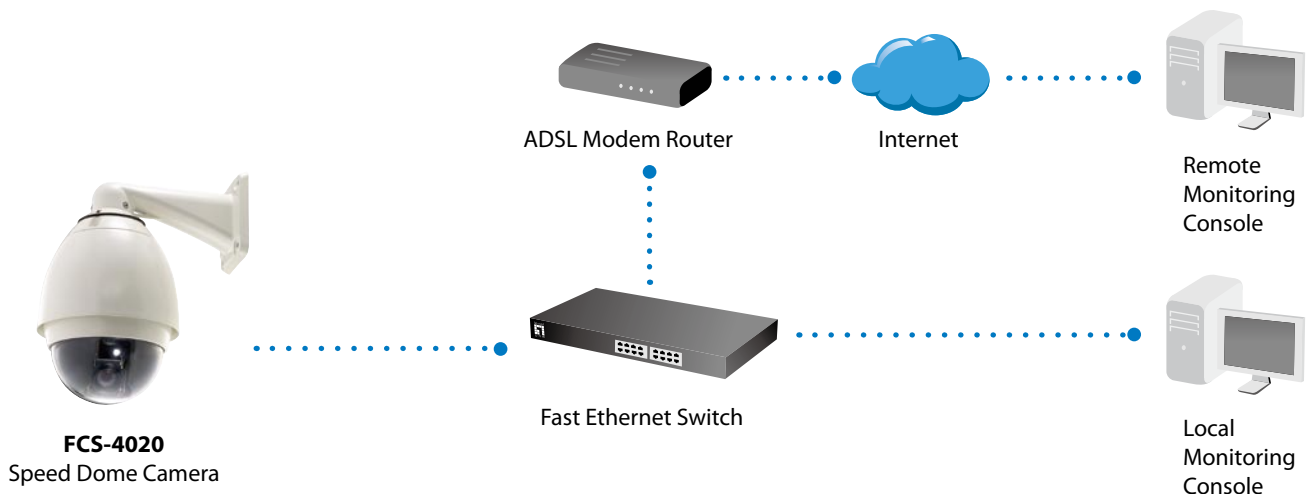
Viewing System Requirements

OS: Microsoft Windows 2000/XP/Vista
 Browser: Mozilla Firefox, Internet Explorer 6.x or above
 Cell Phone: 3GPP player
 Real Player: 10.5 or above
 Quick Time: 6.5 or above

Applications

SDK available for application development and system integration

Product Diagram



Order Information

Package Content

FCS-4020: Day/Night Speed Dome Pro Network Camera (35x)

- FCS-4020
- Power Adapter
- Wall Mount Bracket
- Dome Cover
- Inner Cover
- Silica Gel
- Metal Ring
- Screw kit
- Alignment Sticker
- RJ45 Female/Female Coupler
- CD Manual/Utility
- Quick Installation Guide

Optional Accessories



CAS-4200
USB Joystick for PTZ
Network Cameras



CAS-3015
IR Illuminator (15M)



CAS-3030
IR Illuminator (30M)



FCS-4010
Pole Mount Kit



CAS-4011
Corner Mount Kit

All mentioned brand names are registered trademarks and property of their owners. Technical specifications are subject to change without notice.

© Copyright Digital Data Communications GmbH. All Rights Reserved.