



## 2-Megapixel Day/Night PoE Dome Network Camera



FCS-3081

H/W Version: 3

### Product Overview

The LevelOne FCS-3081 is the perfect solution for day/night surveillance projects such as school campuses, railways stations, and parking lot. It features a 2-megapixel Dome network camera with IP66 weatherproof outdoor housing and infrared LEDs (30m). With the assistance of 3DNR (3-Dimension Noise Reduction) and WDR (Wide Dynamic Range), the network camera offers crystal clear image each and every time. It is also equipped with a BNC connector for camera to be connected directly to an analog monitor, IR-cut filter, a built-in Micro SD/SDHC card, 10 motion detection zones and also offers a flexible installation with its triple power support (12 VDC/24 VAC/PoE) and 3-axis mechanical design. The FCS-3081 is indisputably the top choice for reliable and high performance surveillance.

### Exceptional Image Quality

With built-in 3DNR (3-Dimension Noise Reduction) and WDR (Wide Dynamic Range) technology, the camera is able to filter the intense backlight

surrounding a subject and remove noises from video signal. The result is that an extremely clear and exquisite picture quality can be produced even under any challenging lighting conditions.

### 64-channel Management Software

We aim to offer you the most versatile and comprehensive surveillance solutions. Our IP CamSecure software coming with the camera allows you to monitor up to 64 megapixel IP cameras simultaneously on one screen to enhance scalability. For added convenience and flexibility, the software includes various advanced features such as scheduling recording, event alert, and heaps more. In addition, simply install our free iCamSecure App to your smartphone and connect to the PC with IP CamSecure software installed, you will easily turn your iPhone/Android smartphone into a portable surveillance system for real-time monitoring and snapshot.

### Key Features

- 2-Megapixel (1920 x 1080) high-definition resolution
- Built-in infrared LEDs for night viewing up to 30m
- Vandalproof and weatherproof IP66-rated with wide operating temperature (-35°C to 50°C) for harsh environments
- Features WDR (Wide Dynamic Range) to enhance visibility under extremely bright or dark environments
- Features 3DNR (3-Dimension Noise Reduction) to produce extremely clear picture quality even under low light condition
- 3-axis mechanical design for ceiling/wall mount installation
- Built-in Micro SD/SDHC card slot for local storage
- Digital input/output (1DI/1DO) for sensor and alarm
- BNC connector for analog video output
- Triple power support: 12VDC/24VAC/PoE (IEEE 802.3af)
- Free 64-channel monitoring software included (supports iCamSecure App)

### Relate Products



**NVR-0208**  
8-CH Network Video Recorder



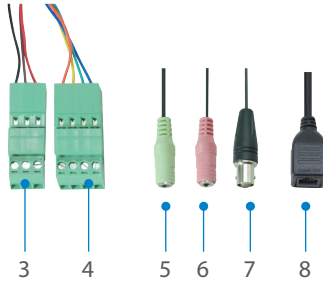
**FSW-0503**  
4 FE PoE + 1FE Switch

## Technical Specification

<b>Camera</b>
<b>Image Sensor</b> 2-Megapixel 1/2.7" Progressive Scan CMOS
<b>Effective Pixels</b> 1920x1080
<b>Lens</b> Board lens, vari-focal, f=3 - 9 mm, F1.2
<b>Angle of View</b> 103.5° (W) ~ 34.3° (T)
<b>Minimum Illumination</b> Color: 0.2 lux at F1.2 B/W: 0.02 lux at F1.2
<b>IR Cut Filter</b> Removable infrared-cut filter for day & night function
<b>Shutter Time</b> 1 to 1/10000 sec.
<b>Pan/Tilt/Zoom</b> 8x digital zoom
<b>IR LED</b> 24 IR LEDs for illumination up to 30m
<b>Video</b>
<b>Video Compression</b> H.264/MJPEG
<b>Resolutions</b> Full HD 1080p/SXGA/HD 720p/XGA/SVGA/D1/VGA/CIF
<b>Frame Rate</b> Up to 15 fps at 1920x1080 Up to 30 fps at 1280x1024
<b>Video Streaming</b> Multiple simultaneous streams, up to 4 streams
<b>Image Setting</b> Adjustable image size, quality and bit rate Configurable brightness, sharpness, contrast, saturation, white balance and exposure AGC/AWB/AES Back Light Compensation (BLC) Wide Dynamic Range (WDR) 3D Noise Reduction (3DNR) Flip & Mirror Portrait Mode Privacy Mask Time Stamp and Text Caption Overlay
<b>Audio</b>
<b>Audio Streaming</b> Two-way
<b>Audio Compression</b> G.711/G.726
<b>Audio Input/Output</b> Mic/line input, line output
<b>Network</b>
<b>Security</b> HTTPS, IP Filter, IEEE 802.1X
<b>Supported protocols</b> IPv4/v6, TCP/IP, UDP, RTP, RTSP, HTTP, HTTPS, ICMP, FTP, SMTP, DHCP, PPPoE, UPnP, IGMP, SNMP, QoS, ONVIF
<b>Number of clients</b> 20

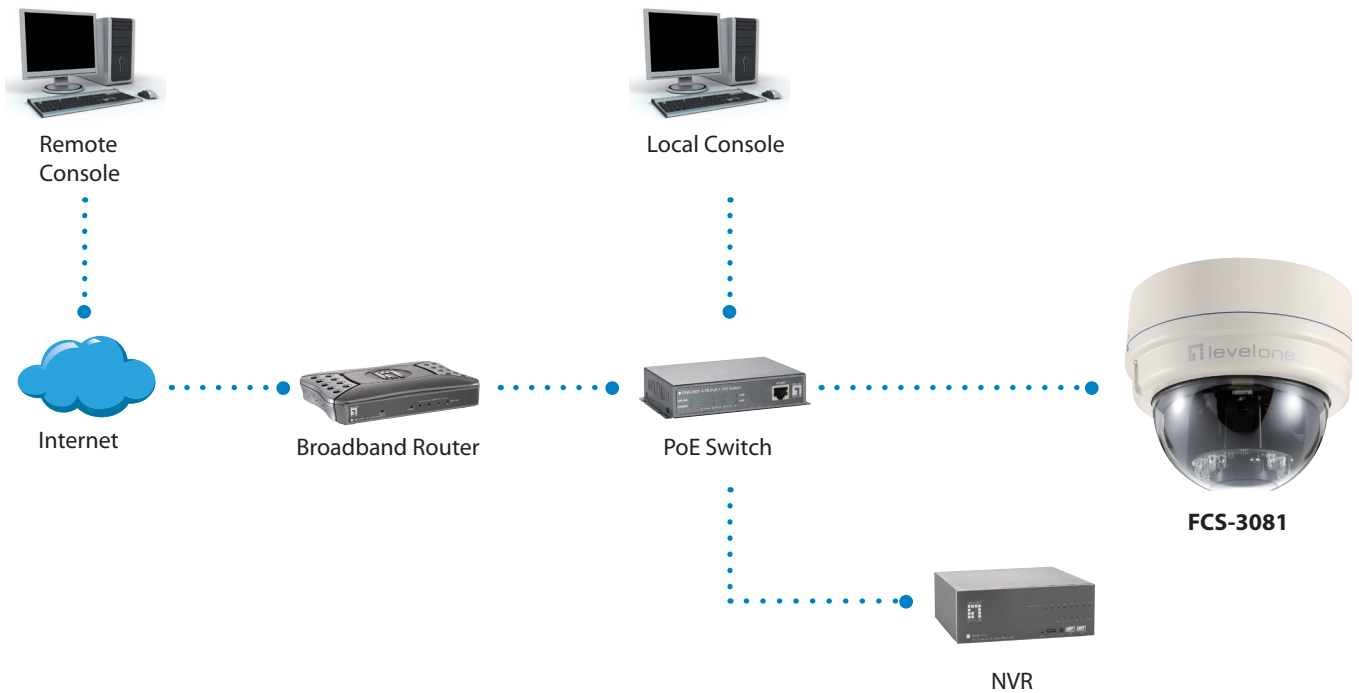
<b>Alarm and Event Management</b>
<b>Motion Detection</b> 10 Detection Areas
<b>Events</b> Tampering Detection Network Failure Detection
<b>Notification</b> HTTP, FTP, SMTP
<b>DI/DO</b> One D/I and one D/O for external sensor and alarm
<b>General</b>
<b>Local storage</b> MicroSD/SDHC card slot
<b>Power</b> DC12V/AC24V/PoE
<b>Power Consumption</b> up to 9W without heater & fan (DC12V/PoE) up to 25W with heater & fan (AC24V)
<b>Connectors</b> RJ-45 10BASE-T/100BASE-TX 3.5mm line out 3.5mm mic/line in I/O terminal block (DI/DO) Power terminal block BNC analog video output
<b>LED Indicator</b> Link/Act
<b>Button</b> Reset Button
<b>Operating Temperature</b> -10°C ~ 50°C, powered by DC12V/PoE -35°C ~ 50°C with heater & fan, powered by AC24V
<b>Operating Humidity</b> 10% to 90%, non-condensing
<b>Housing</b> Weather-proof IP66 rated housing Metal base and polycarbonate transparent cover
<b>Dimensions</b> ø151 x 130 mm
<b>Weight</b> 1350 g
<b>Approvals</b> CE, FCC
<b>Viewing System Requirements</b> OS: Microsoft Windows 7/Vista/XP Browser: Internet Explorer 6.x or above, Firefox, Chrome, Safari Cell phone: 3GPP player Real Player: 10.5 or above Quick Time 6.5 or above
<b>Bundled Software</b> Bundled with 64-Channel LevelOne IP CamSecure surveillance management software

## Front View and Rear View



1. Lens
2. IR LEDs
3. Power
4. Alarm I/O
5. Audio Out
6. Audio In
7. BNC Connector
8. RJ-45 LAN

## Product Diagram



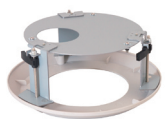
## Order Information

**FCS-3081:** 2-Megapixel Day/Night PoE Dome Network Camera

## Package Content

FCS-3081, Power Terminal Block, Security Torx, Screw Set, Quick Installation Guide, CD Manual / Utility

## Optional Accessories



**CAS-3100**  
T-Bar Ceiling Mount



**CAS-3101**  
interior corner mount



**CAS-3000**  
outdoor housing



**CAS-3241**  
Straight Tube 25cm



**CAS-3242**  
Straight Tube 50cm



**CAS-3201**  
Mini Pendant



**CAS-3221**  
Corner Plate Mini



**CAS-3261**  
Pole Thin Direct Mounting

All mentioned brand names are registered trademarks and property of their owners. Technical specifications are subject to change without notice.

© Copyright Digital Data Communications GmbH. All Rights Reserved.