



Day/Night Network Camera

FCS-1070

H/W Version: 1

Product Overview

The LevelOne Day/Night IP Network Camera is a powerful surveillance camera that connects easily with a wired Ethernet to provide high-quality video and audio to a control room or broadcast it to remote locations over the Internet.

The FCS-1070 dual-Codec network camera with 2-way audio and extensible day/night feature makes it more suitable for surveillance applications than any other IP camera in its class.

Day/Night Camera

The FCS-1070 IP Camera is an excellent solution when deployed outside. With its high quality CCD sensor and its IR attached lens, it can capture brilliant and clear pictures under low



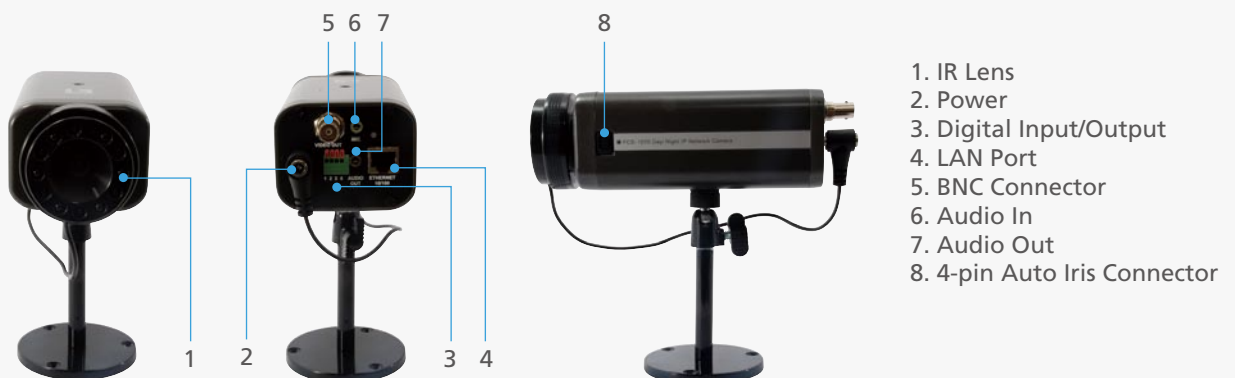
light conditions making it suitable for almost all security and surveillance applications.

Advanced Features

The FCS-1070 from LevelOne supports a number of advanced features that give the camera increased flexibility and capabilities. The Day/Night camera features motion detection, and extended Input/Output connectors making it possible to connect sensors and alarms with this camera.

Free Bundled Software

With LevelOne's free bundled software, administrators are able to monitor up to 32 channels simultaneously. It also provides recording capabilities for synchronized video and audio when captured by event-driven or scheduled recording modes.



Key Features

- MJPEG/MPEG4 video compression
- Day/Night application in low light conditions
- Two-way audio
- Optimal synchronization of audio and video
- Motion detection
- Extended I/O for sensors and alarms
- Provides BNC video output for CCTV system
- Free software included (Industry-leading 32-channel IP CamSecure Lite™ software)

Works Well With



FCS-9464
IP CamSecure Pro64 Mega



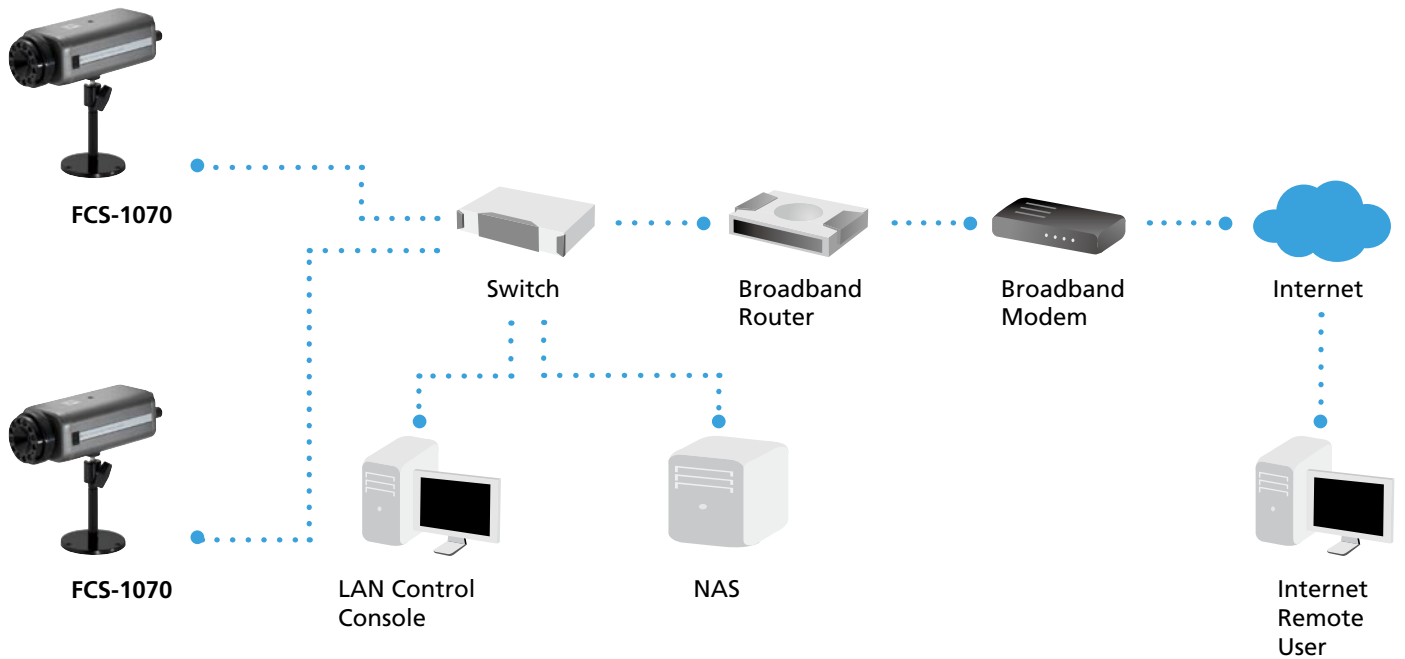
FCS-7011
1-Port PoE Video Server

Technical Specification

Network
Standards Compliance
IEEE 802.3 10BaseT Ethernet
IEEE 802.3u 100Base-TX Fast Ethernet
Ports
1 x RJ-45 10/100 Mbps port
Video
Compression Mode
MPEG4/MJPEG
Max. Resolution
704x480 pixels(NTSC)
704x576 pixels(PAL)
Frame Rate
176x120: 30/25fps
352x240: 30/25fps
704x480: 15/12fps
Still Picture
JPEG
Video Record
AVI
Camera
Sensor
1/3 inch color CCD sensor
Lens
f=6.0mm, F2.0
View Angle
Vertical 34°
Horizontal 44°
Minimum Illumination
0.5 Lux / F2.0 (Typical); 0 Lux (10meters with IR Lens)
Infrared Facility
Infrared LEDs on lens
Electronic Shutter (Sec)
1/60~1/100,000(NTSC)
1/50~1/100,000(PAL)
AGC/AWB/AES
Auto Iris Control
DC-drive Iris
Audio
Audio In
External Microphone Input*1
Built-in Microphone
Omni-directional
Frequency: 20 – 20,000Hz
Audio Out
Audio output connector
Audio Codec
8/24/32kbps Full-Duplex
S/N Ratio
>58dB
Digital Zoom
4x

Flash ROM
4MB Flash ROM
SDRAM
16MB SDRAM
Housing
Indoor use
Day/Night
Infrared LEDs on lens
Digital I/O
1 sensor input max. 12DC 50mA
1 relay output max. 24DC 1A/125AC 0.5A
Power
Consumption: Max. 9.4W
Input: 100-240VAC, 50/60Hz, 0.4A
Output: 12VDC, 1.5A
Temperature
Operating: 0°C ~ 40°C /32-104°F
Humidity
Operating: 85%RH
Dimension
140mm(L) * 70mm(W) * 55mm(H)
Weight
430g
Supported Protocols
UPnP, TCP/IP, HTTP, SMTP, FTP, Telnet, NTP, DNS, DHCP, DDNS
Software
Bundled with 32-Channel LevelOne IP CamSecure Lite surveillance management software
Viewing System Requirement
OS
Microsoft Windows 2000/XP/Vista
Browser
IE 6.x or above
EMI and Safety
FCC, CE

Product Diagram



Order Information

FCS-1070: Day/Night Network Camera

Package Contents

FCS-1070
 IR Lens
 Power Adapter
 Camera Stand
 CD Manual/Utility
 Quick Installation Guide

Optional Accessories



CAS-3015
 IR Illuminator (15M)



CAS-3030
 IR Illuminator (30M)



CAS-1000A
 3.5~8mm Vari-Focal Lens



CAS-1100
 6~60mm Vari-focal Lens

All mentioned brand names are registered trademarks and property of their owners. Technical specifications are subject to change without notice.

© Copyright 2009 Digital Data Communications GmbH. All Rights Reserved.