



P/T Network Camera



FCS-1060

H/W Version: 2

LevelOne FCS-1060 is a Pan and Tilt IP Network camera, offering superior image quality and optimized bandwidth efficiency through existing Ethernet connections. It is able to broadcast live images to your handheld mobile phone or PDA and supports 3GPP/ISMA RTSP format via a 3G mobile phone.

Pan/Tilt/ Network Camera

The FCS-1060 contains a CMOS sensor to record brilliant images up to 640 x 480 pixels. The Auto Pan function allows the user to define individual cameras automatic panning movements thus providing the capability to survey the widest range of targets over a pan range of 350-degrees and a tilt range of 125-degrees. The Patrol mode allows the user to preset up to 20 spots for sequential auto-monitoring.

Advanced Monitoring Features

The motion detection feature provides operational flexibility to record only when there is motion thus saving record storage. With a built-in web server, the FCS-1060 provides an easy user interface for remote access to receive video over the Internet with the Internet Explorer browser.

Easy Maintenance and Configuration

With LevelOne's free bundled software, administrators are able to monitor up to 32 channels simultaneously. The FCS-1060 also provides recording capabilities for synchronized video & audio when captured by event-driven or schedule recording modes.



1. LAN Port
2. Power Cord Socket

Key Features

- Built-in 1/4" CMOS sensor to deliver high quality streaming video
- Motorized wide-range Pan/Tilt.
- Supports 3GPP/ISMA RTSP (Real Time Streaming Protocol)
- Intelligent Motion Detection
- Built-in Web server for remote accessing image from general web browser anywhere
- Free software included (Industry-leading 32-channel IP CamSecure Lite™ software)

Works Well With



FCS-9464
IP CamSecure Pro64 Mega



FCS-7011
1-port PoE Video Server

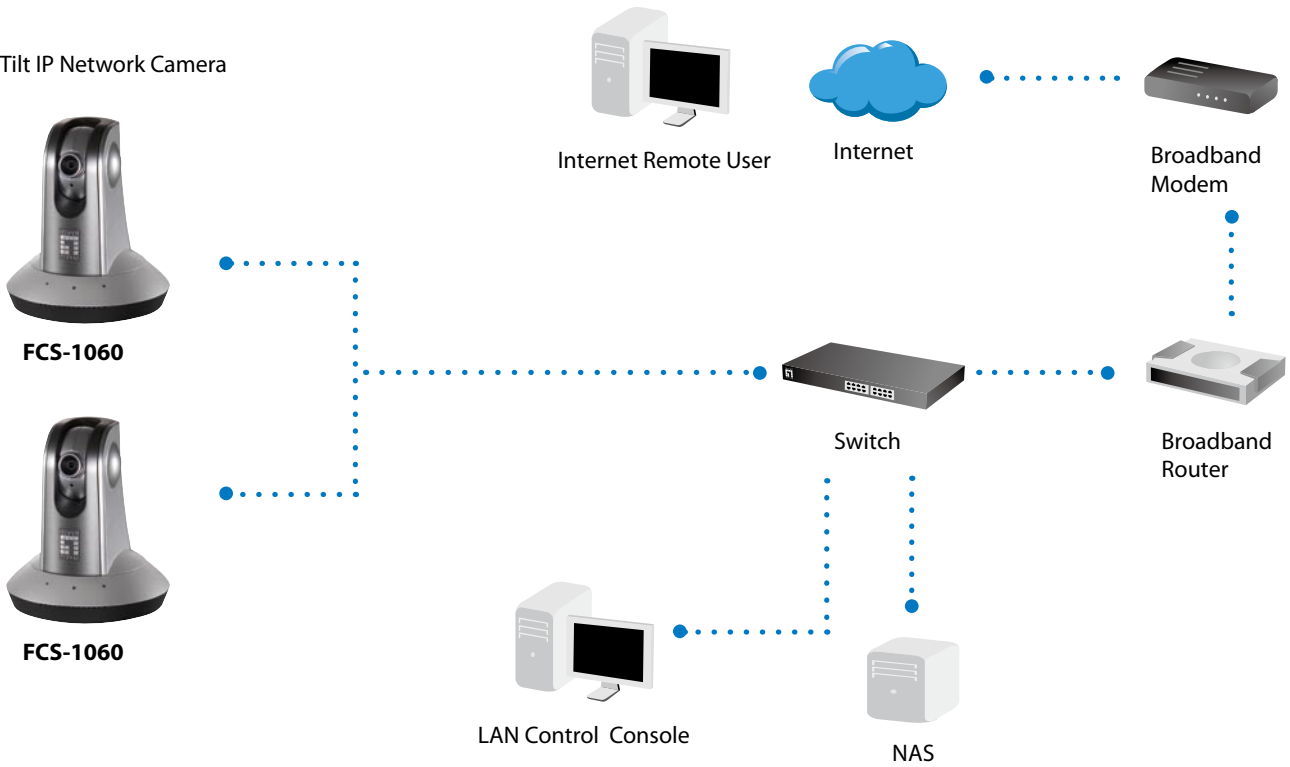
Technical Specification

Network
1 x RJ-45 10/100 Mbps port
Video
Compression Mode
MPEG4 (Simple Profile) for streaming video JPEG for still image
Max. Resolution
640x480 pixels
Frame Rate
Up to 30/25 frames at 160x120 Up to 30/25 frames at 176x144 Up to 30/25 frames at 320x240 Up to 30/25 frames at 640x480
Still Picture
JPEG
Video Record
AVI
Camera
Sensor
1/4 inch color CMOS sensor
Lens
4.0mm, F2.0
View Angle
Vertical 37° Horizontal 49°
Minimum Illumination
1Lux/ F2.0
Electronic Shutter (Sec)
1/60 to 1/15,000 sec
AGC/AWB/AES
Audio
Audio In
Omni-directional microphone Frequency: 50 – 16,000Hz
Audio Codec
GSM-AMR/ MPEG4 AAC
S/N Ratio
>60dB
PTZ
Pan
350° (+175°~-175°)
Tilt
range 125° (+90°~-35°)
Number of preset positions
20
Digital Zoom
4x

Hardware & Environment
Flash ROM
4MB Flash ROM
SDRAM
32MB SDRAM
Housing
Indoor use DOH-1000/DOH-1100 optional for IP66-rated outdoor use
Power
12VDC,1.5A
Temperature
Operating: 0°C -40°C (32°F -102°F)
Humidity
Operating: 85% (RH)
Dimension
121.4mm(L) * 110mm(W) * 103mm(H)
Weight
222g
LEDs
System power and status indicator System activity and Network link indicator Microphone status indicator
Supported Protocols
UPnP, TCP/IP, RTSP/RTP/RTCP, HTTP, SMTP, FTP, Telnet, NTP, DNS, DHCP, DDNS and PPPoE
Software
Bundled with 32-Channel LevelOne IP CamSecure Lite surveillance management software
Viewing System Requirement
OS
Microsoft Windows 2000/XP/Vista
Browser
IE 6.x or above, Firefox, Safari, Mozilla, Netscape
3GPP Player
Real Player 10.5 or above Quick Time 6.5 or above
EMI and Safety
FCC, CE

Product Diagram

Pan/Tilt IP Network Camera



Order Information

Package Contents

FCS-1060: P/T Network Camera

FCS-1060
Power Adapter
Mounting Kit & Pads
CD Manual/Utility
Quick Installation Guide

Optional Accessories



DOH-1000
Domed Outdoor Housing



DOH-1100
Heavy-Duty Domed Outdoor Housing

All mentioned brand names are registered trademarks and property of their owners. Technical specifications are subject to change without notice.

© Copyright 2008 Digital Data Communications GmbH. All Rights Reserved.