



# Gigabit Access and AP Management Gateway Plus



AMG-2101

H/W Version: 1

AMG-2101 Gigabit Access and AP Management Gateway Plus, with built-in 6,000 local accounts and 4,000 on-demand accounts, it is an ideal security solution for large scaled network deployments, such as enterprises, campuses, hotels, airport terminals, and MDUs/ MTUs. A compact-sized gateway, AMG-2101 provides flexible configurations and maintaining high-level security for hotspot and/or hospitality deployments.

## Business Networking Security

AMG-2101 secures information transmission for mobile workers and home-based teleworkers via Local, Site-to-Site and Remote VPN tunnels to increase security level for enterprise network.

## Characterized Access Profile for Particular Users

For places like school dormitories, apartments and hotels, AMG-2101 makes it easy to manage accounts of network users and equally share bandwidth among them. With simple and user friendly setup, administrators can easily configure different access profiles for different users, making access policy more flexible. In addition, billing policy allows administrator to select the best suitable cost plan for each user.

## Integration with Property Management System (PMS)

AMG-2101 stands for the most cost-effective solution for hotels application. With the Property Management System (PMS) such as Micros Fidelio/Opera, hotel guest can purchase Internet service either at the front desk or in room, which will be integrated into the room bill. In addition, AMG-2101 can manage and bill wired and wireless Internet services through modern IP network infrastructure or those utilize traditional phone lines through DSLAM and DSL modems.

## Customized and Reliable for Hotspot Operation

For Telcos or hotspot operators, AMG-2101 brings a convenient and economical way to deploy comprehensive hotspot services. While most operators prefer external RADIUS servers as an authentication database, AMG-2101 can act as a central RADIUS-NAS, supporting two authentication methods: UAM and 802.1X. Moreover, it supports customized web UAM pages and, with Service Zone setting, allows one Gateway to manage multiple franchised hotspots simultaneously.



1. LED Indicator
2. Console Port
3. Reset Button
4. Reserved USB Ports
5. Management Port
6. WAN Port
7. LAN Port
8. Power Switch
9. Power Cord Socket

## Key Features

- Simplified Operation and Reliable Internet Connection
- Powerful Network Security Capabilities
- Comprehensive User Management
- Centralized Access Point (AP) Management
- Flexible Accounting and Billing
- Support for Location-Based Hotspot Services and Customizable UAM Web Pages
- Property Management System (PMS) Integration for Hotel Applications

## Related Products



**AMG-2001**  
Access and AP Management Gateway



**AMG-2100**  
Gigabit Access and AP Management Gateway

## Technical Specifications

### Networking

- NAT or Router mode
- Static IP, DHCP, PPPoE mode on WAN interfaces and PPTP (WAN 1 only)
- NAT:
  - (1) IP/Port destination redirection
  - (2) DMZ server mapping
  - (3) Virtual server mapping
  - (4) H.323 pass-through
- Built-in with DHCP Server and support DHCP relay
- Walled Garden
- Walled Garden Ad List to create Ad website links on user login portal page
- MAC-address and IP-address pass-through
- HTTP Proxy
- IP Plug-and-Play (IP PnP)
- Configurable static routes
- Contain built-in hardware-based VPN accelerator
- Dual uplinks, outbound load balancing and failover for more reliable Internet connection
- SIP pass-through NAT
- Ethernet connection to external terminal servers

### Security

- Local VPN (local termination of IPSec tunnels)
- PPTP VPN tunnels
- Site-to-site VPN tunnels
- VPN pass-through (IPSec and PPTP)
- Built-in DoS attack protection

### Service Zones

- The network is divided into maximum 9 Service Zones, each defined by a pair of VLAN tag and ESSID
- Each service zone has its own (1) login portal page (2) authentication options (3) LAN interface IP address (4) DHCP address range
- Each service zone allows access to the selected groups
- Each service zone assigns a network policy to each user group

### User Management

- 6,000 Local accounts and 4,000 On-demand accounts
- On-demand accounts for visitors
- Local user account roaming
- Authentication methods supported: Local and On-demand accounts, POP3, LDAP, RADIUS, Windows Domain, and SIP
- Single Sign-On for Windows Domain
- Allow MAC address and user identity binding for local user authentication
- MAC Access Control List
- Users can be divided into user groups, each user group has its own network properties, including bandwidth, QoS, accessible service zones, and other privileges
- Support QoS and WMM traffic types: Voice, Video, Best Effort and Background
- Each group (role) may get different network policies in different service zones
- Max concurrent user session (TCP/UDP) limit
- A setting for user-idle-timeout
- Configurable user Black List
- Export/Import local users list to/from a text file

### Accounting and Billing

- Billing plans for On-demand accounts
- On-line payment with credit card and PayPal account via external payment gateways (Authorize.Net, PayPal, and SecurePay)
- Enable session expiration control for On-demand accounts by time (hour) and data volume (MB)
- Detailed per-user network traffic history for both Local and On-demand user accounts
- RADIUS accounting
- RADIUS VSA implementation for volume-based session control using RADIUS server
- Automatic e-mail to report network traffic history

### System Administration

- Web-based management user interface
- Provide customizable login and logout portal page
- SSH remote management
- Remote firmware upgrade
- NTP time synchronization
- Menu driven console management interface
- Utilities to backup and restore the system configuration

### Monitoring and Reporting

- Status monitoring of on-line users
- IP-based monitoring of network devices
- Uplink (WAN) connection failure alert
- Support Syslog for diagnosis and troubleshooting
- User traffic history logging
- Traffic history report via email to administrator
- Users' session log can be sent to ftp or Syslog server

### AP Management

- Number of managed APs: 80
- Centralized remote management via HTTP
- Auto discovery for managed APs
- Enable or disable APs easily via user interface
- Templates for managed APs
- Monitor managed AP for the system status, the number of associated clients, and RF information
- Upgrade managed APs centrally, including bulk upgrade
- Monitor 3rd party, non-integrated APs: 200

### Hardware Specifications

- WAN Ports: 2 x 10/100/1000 BASE-T RJ-45
- LAN Ports: 2 x 10/100/1000 BASE-T RJ-45
- Management Port : 1 x 10/100 BASE-T RJ-45
- Console Port: 1 x RJ-45
- LED Indicators: 1 x Power, 1 x Status, 2 x WAN, 2 x LAN
- LCD Display

### Physical and Power

- Power Adapter: 100~240 VAC, 50~60 Hz
- Form Factor: 19" 1U Rack Mount
- Dimensions (W x D x H): 426 mm x 270 mm x 44.4 mm
- Weight: 6 kg

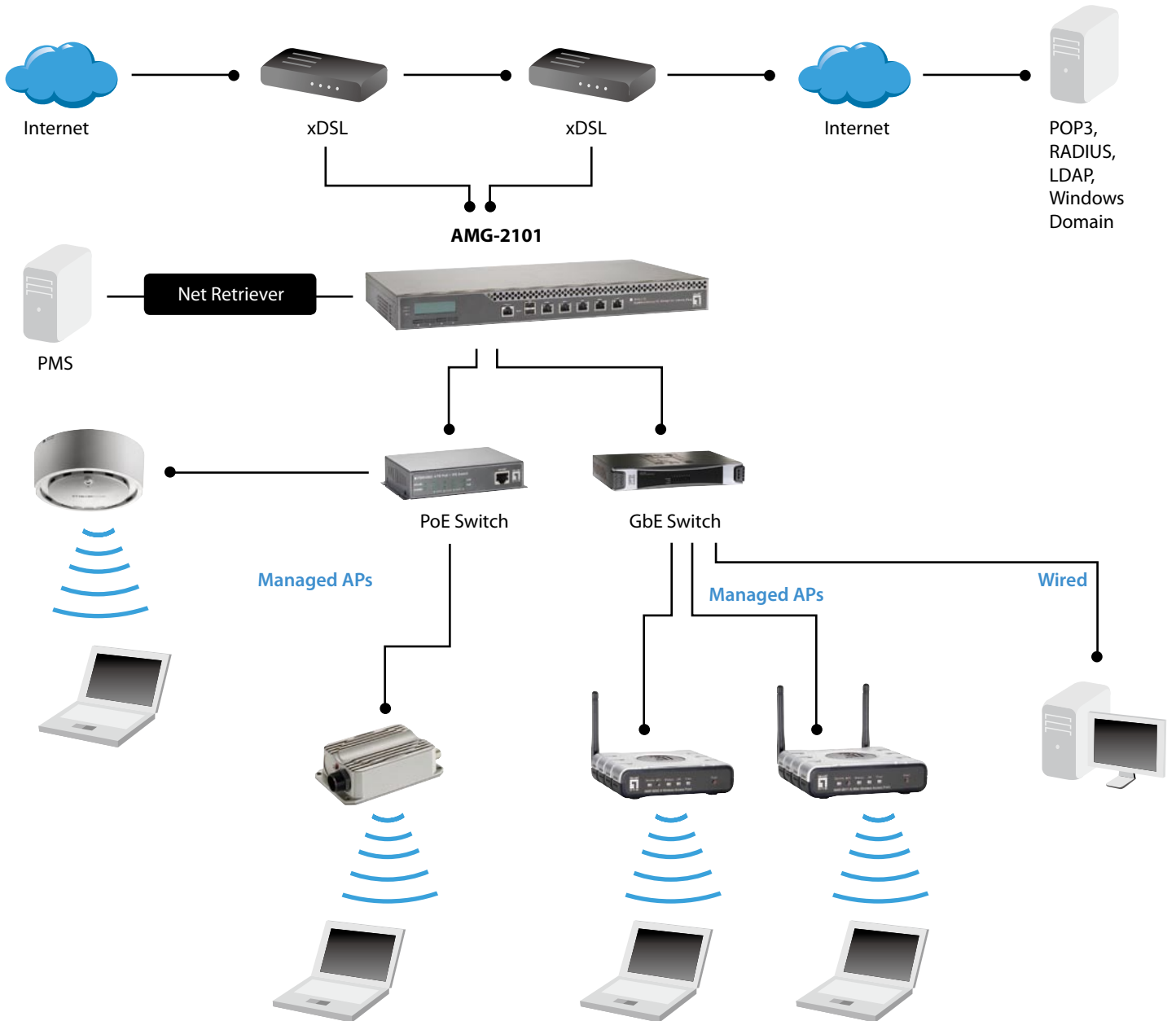
### Environment

- Operating Temperature: 0 ~ 40 oC
- Storage Temperature: -20~70 oC
- Operation Humidity: 5%~95% non-condensing

### Certifications

- CE, FCC
- RoHS compliant

## Dimension Diagram



## Order Information Package Contents

### **AMG-2101:** Gigabit Access and AP Management Gateway Plus

- AMG-2101 x 1
- CD-ROM (with User's Manual and QIG) x 1
- Quick Installation Guide (QIG) x 1
- Console Cable x 1
- Ethernet Cable x 1
- Power Cord x 1



## Managing Access Points



**WAB-3003**  
108Mbps 11g Outdoor PoE AP



**WAP-6002**  
150Mbps N Wireless Access Point



**WAP-3101**  
108Mbps Ceiling Mount PoE  
Wireless Access Point



**WAP-6011**  
300Mbps N\_Max Wireless Access  
Point